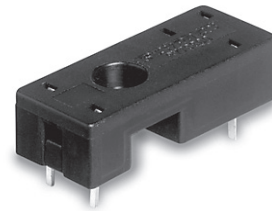


**Accessories Miniature PCB Relay RYII**

- Accessories for Miniature PCB Relay RYII, pinning 3.2 mm
- Socket with PCB terminals
- No reduction of protection class or creepage/clearance with plastic retainer
- Easy replacement of relays
- Socket can be used as connector for diagnosis function
- Not suitable for MSR-type



F0125-A



**Socket with PCB terminals**

**Approvals**

cULus E135149

**Technical data RY 78 600**

Rated voltage/Max. switching voltage AC	240/400 VAC
Rated current	12 A
Limiting continuous current	see derating curve
Dielectric strength coil-contact circuit	5000 V <sub>rms</sub>
Clearance / creepage coil-contact circuit	≥ 8/8 mm
Material group of insulation parts	IIIa
Insulation to IEC 60664-1	
Type of insulation coil-contact circuit	reinforced
open contact circuit	functional
Rated insulation voltage	250 V
Pollution degree	2
Rated voltage system	230 / 400 V

Overvoltage category III  
Material compliance: EU RoHS/ELV, China RoHS, REACH, Halogen content refer to the Product Compliance Support Center at [www.te.com/customer-support/rohssupportcenter](http://www.te.com/customer-support/rohssupportcenter)

Ambient temperature range	-40...+80°C
Terminals	pcb
Insertion cycles	A (10)
Max. Insertion Force total	100 N
Mounting distance	≥ 0, dense packing
Resistance to soldering heat	270°C / 10 s
Weight	3 g
Packaging unit	100 pcs

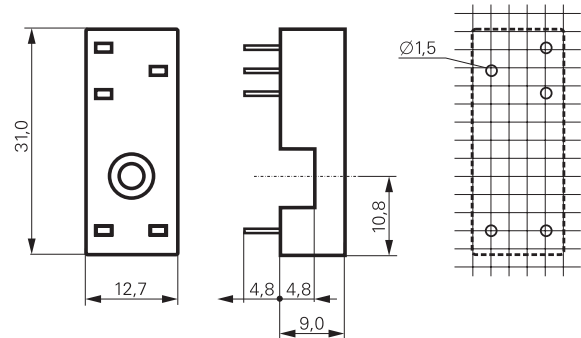
**Socket with PCB terminals**

Type	Part Number
<b>RY 78 600</b> Socket with PCB terminals, pinning 3.2 mm	7-1393161-3

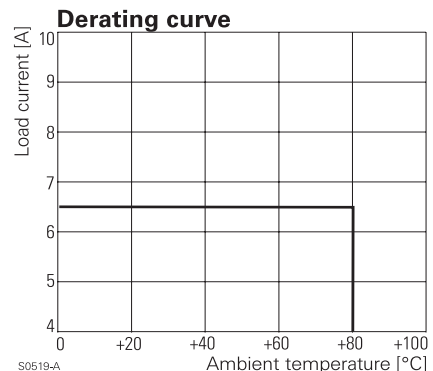
**Accessories for RY 78 600**

Type	Part Number
<b>RY 16 037</b> Plastic retaining clip	6-1393161-5

**RY 78 600**, pinning 3.2 mm



S0322-AA



S0519-A