

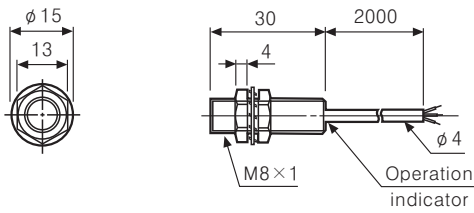
# Cylindrical Type Proximity Sensor

## Dimensions

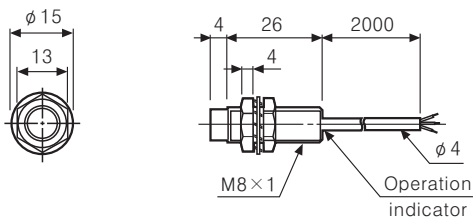
(Unit:mm)

|     |  |
|-----|--|
| (A) | Photo electric sensor                    |
| (B) | Fiber optic sensor                       |
| (C) | Door/Area sensor                         |
| (D) | <b>Proximity sensor</b>                  |
| (E) | Pressure sensor                          |
| (F) | Rotary encoder                           |
| (G) | Connector/Socket                         |
| (H) | Temp. controller                         |
| (I) | SSR/Power controller                     |
| (J) | Counter                                  |
| (K) | Timer                                    |
| (L) | Panel meter                              |
| (M) | Tacho/Speed/Pulse meter                  |
| (N) | Display unit                             |
| (O) | Sensor controller                        |
| (P) | Switching power supply                   |
| (Q) | Stepping motor & Driver & Controller     |
| (R) | Graphic/Logic panel                      |
| (S) | Field network device                     |
| (T) | Production stoppage models & replacement |

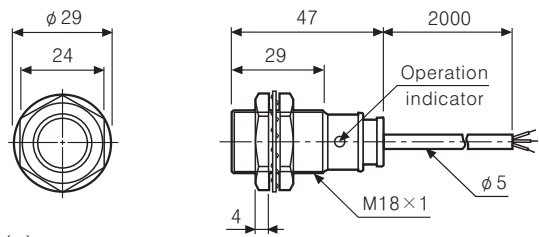
### ●PR(T)08-1.5D□



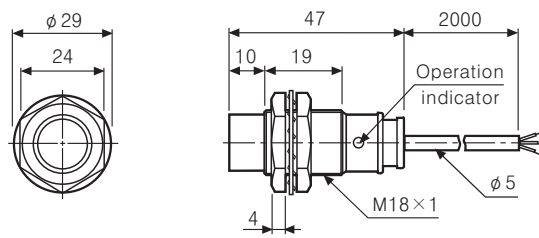
### ●PR(T)08-2D□



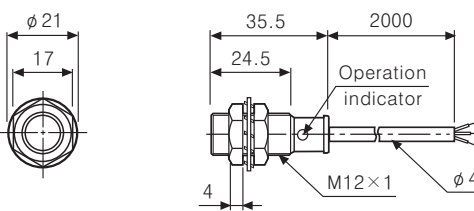
### ●PR(T)18-5D□



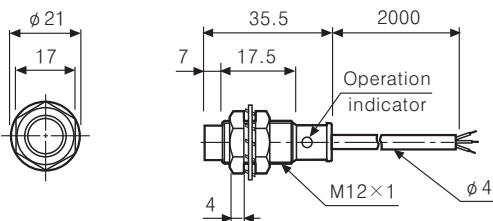
### ●PR(T)18-8D□



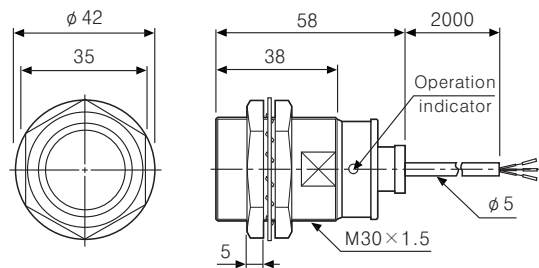
### ●PRS12-2D□



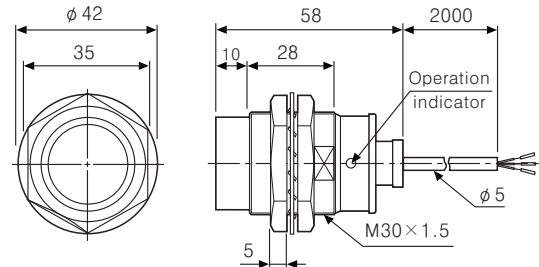
### ●PRS12-4D□



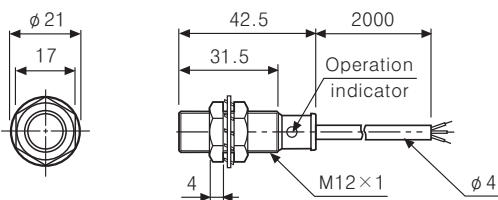
### ●PR(T)30-10D□



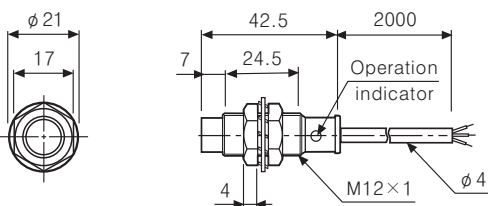
### ●PR(T)30-15D□



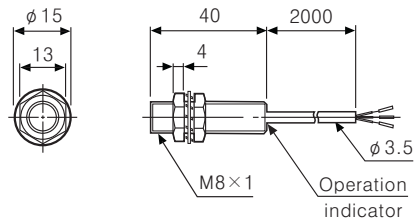
### ●PR(T)12-2D□



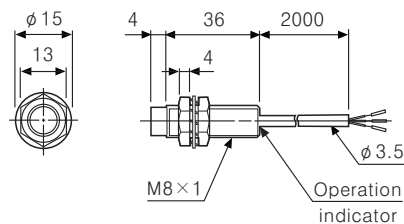
### ●PR(T)12-4D□



### ●PRL08-1.5D□



### ●PRL08-2D□

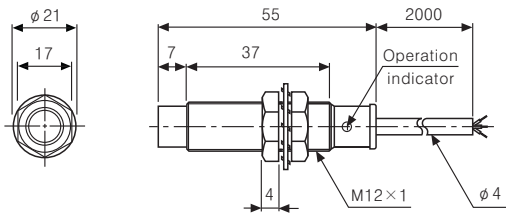


# PR Series

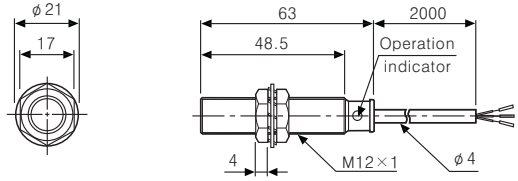
## ■ Dimensions

(Unit:mm)

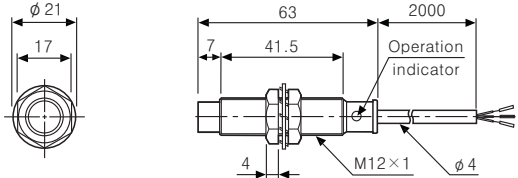
●PRL12-4D□



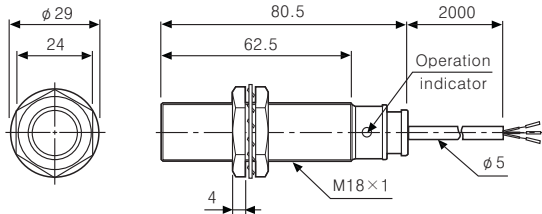
●PR12-2A□



●PR12-4A□

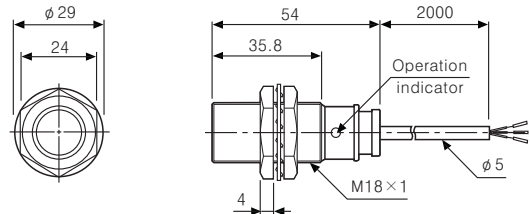


●PRL18-5D□

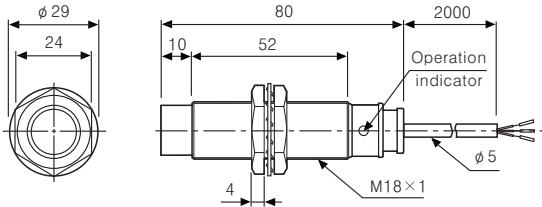


●PRL18-5A□

●PR18-5A□

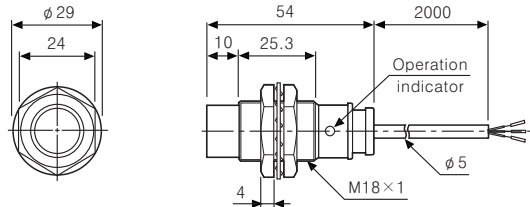


●PRL18-8D□

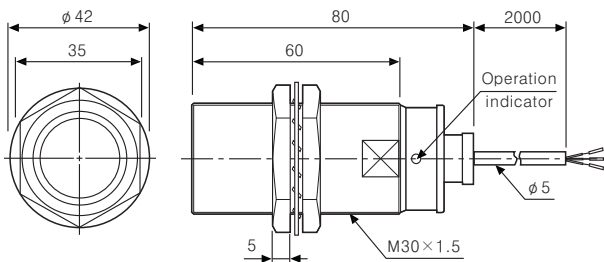


●PRL18-8A□

●PR18-8A□

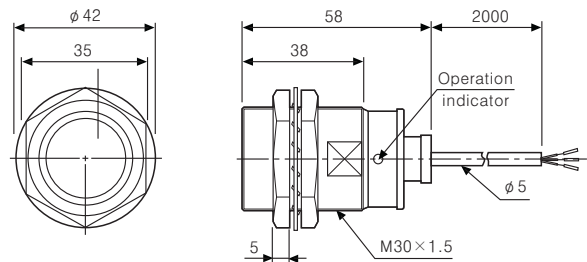


●PRL30-10D□

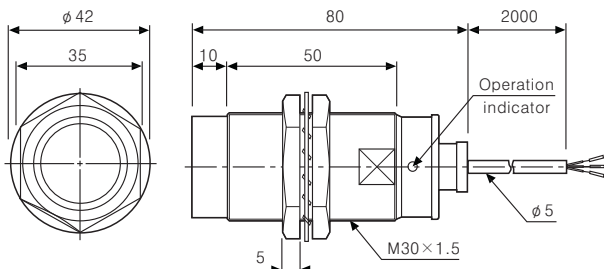


●PRL30-10A□

●PR30-10A□



●PRL30-15D□



●PRL30-15A□

●PR30-15A□

