

**1 & 2 Pole - Low profile (15.7 mm height)**  
**41.31 - 1 Pole 12 A (3.5 mm pin pitch)**  
**41.52 - 2 Pole 8 A (5 mm pin pitch)**  
**41.61 - 1 Pole 16 A (5 mm pin pitch)**

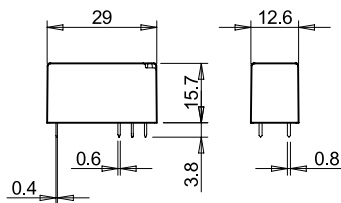
**PCB mount**

- direct or via PCB socket

**35 mm rail mount**

- via screw and screwless sockets

- AC and DC coils
- 8 mm, 6 kV (1.2/50 μs) isolation, coil-contacts
- Cadmium Free contact materials
- Flux proof: RT II standard, (RT III option)



FOR UL RATINGS SEE:

"General technical information" page V

**Contact specification**

Contact configuration	41.31	41.52	41.61
Contact configuration	1 CO (SPDT)	2 CO (DPDT)	1 CO (SPDT)
Rated current/ Maximum peak current	A 12/25	8/15	16/30
Rated voltage/ Maximum switching voltage	V AC 250/400	250/400	250/400
Rated load AC1	VA 3000	2000	4000
Rated load AC15 (230 V AC)	VA 600	400	750
Single phase motor rating (230 V AC)	kW 0.5	0.3	0.5
Breaking capacity DC1: 30/110/220 V	A 12/0.3/0.12	8/0.3/0.12	16/0.3/0.12
Minimum switching load	mW (V/mA) 300 (5/5)	300 (5/5)	300 (5/5)
Standard contact material	AgNi	AgNi	AgNi

**Coil specification**

Nominal voltage (U <sub>N</sub> )	V AC (50/60 Hz)	24 - 230	24 - 230	24 - 230
	V DC	5 - 6 - 12 - 24 - 48 - 60 - 110	5 - 6 - 12 - 24 - 48 - 60 - 110	5 - 6 - 12 - 24 - 48 - 60 - 110
Rated power AC/DC	VA (50 Hz)/W	0.75/0.4	0.75/0.4	0.75/0.4
Operating range	AC	(0.8...1.1)U <sub>N</sub>	(0.8...1.1)U <sub>N</sub>	(0.8...1.1)U <sub>N</sub>
	DC	(0.7...1.5)U <sub>N</sub>	(0.7...1.5)U <sub>N</sub>	(0.7...1.5)U <sub>N</sub>
Holding voltage	AC/DC	0.8/0.4 U <sub>N</sub>	0.8/0.4 U <sub>N</sub>	0.8/0.4 U <sub>N</sub>
Must drop-out voltage	AC/DC	0.15/0.1 U <sub>N</sub>	0.15/0.1 U <sub>N</sub>	0.15/0.1 U <sub>N</sub>

**Technical data**

Mechanical life AC/DC	cycles	10 · 10 <sup>6</sup> / 10 · 10 <sup>6</sup>	10 · 10 <sup>6</sup> / 10 · 10 <sup>6</sup>	10 · 10 <sup>6</sup> / 10 · 10 <sup>6</sup>
Electrical life at rated load AC1	cycles	60 · 10 <sup>3</sup>	60 · 10 <sup>3</sup>	50 · 10 <sup>3</sup>
Operate/release time	ms	8/6	8/6	8/6
Insulation between coil and contacts (1.2/50 μs)	kV	6 (8 mm)	6 (8 mm)	6 (8 mm)
Dielectric strength between open contacts	V AC	1000	1000	1000
Ambient temperature range	°C	-40...+70 (AC); +85 (DC)	-40...+70 (AC); +85 (DC)	-40...+70 (AC); +85 (DC)
Environmental protection		RT II	RT II	RT II

**Approvals** (according to type)



**1 & 2 Pole - Polarized bistable, Low profile  
(15.7 mm height)**

**41.52 - 2 Pole 8 A (5 mm pin pitch)**

**41.61 - 1 Pole 16 A (5 mm pin pitch)**

**Printed Circuit mount**

- Polarized bistable relay with 2 coils
- 10 mm, 6 kV (1.2/50  $\mu$ s) isolation, coil-contacts
- Cadmium Free contact materials
- Flux proof: RT II standard

A

**41.52.6.xxx**

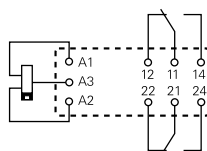
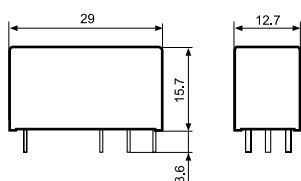


- 2 Pole, 8 A
- PCB direct mount

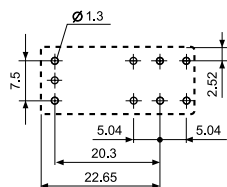
**41.61.6.xxx**



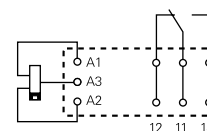
- 1 Pole, 16 A
- PCB direct mount



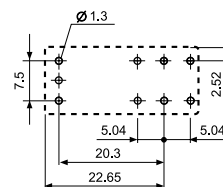
2 coil version:  
A3(+) A2 (-) = Set  
A3(+) A1 (-) = Reset



Copper side view



2 coil version:  
A3(+) A2 (-) = Set  
A3(+) A1 (-) = Reset



Copper side view

**Contact specification**

Contact configuration		2 CO (DPDT)	1 CO (SPDT)
Rated current/ Maximum peak current ( $I_N/I_{max}$ )	A	8/15	16/30
Rated voltage/ Maximum switching voltage ( $U_N/U_{max}$ )	V AC	250/400	250/400
Rated load AC1	VA	2000	4000
Rated load AC15 (230 V AC)	VA	350	750
Single phase motor rating (230 V AC)	kW	0.37	0.55
Breaking capacity DC1: 30/110/220 V	A	8/0.3/0.12	16/0.3/0.12
Minimum switching load	mW (V/mA)	500 (5/100)	500 (5/100)
Standard contact material		AgSnO <sub>2</sub>	AgSnO <sub>2</sub>

**Coil specification**

Nominal voltage ( $U_N$ )	V DC	5 - 12 - 24	5 - 12 - 24
Rated power ( $P_N$ )	W	0.65	0.65
Operating range	DC	(0.7...1.1) $U_N$	(0.7...1.1) $U_N$
Min. impulse duration	ms	20	20
Max. impulse duration	s	30	30

**Technical data**

Mechanical life DC	cycles	5 · 10 <sup>6</sup>	5 · 10 <sup>6</sup>
Electrical life at rated load AC1	cycles	30 · 10 <sup>3</sup>	30 · 10 <sup>3</sup>
Operate/release time	ms	10/5	10/10
Insulation between coil and contacts (1.2/50 $\mu$ s)	kV	6 (10 mm)	6 (10 mm)
Dielectric strength between open contacts	V AC	1000	1000
Ambient temperature range	°C	-40...+85	-40...+85
Environmental protection		RT II	RT II

**Approvals** (according to type)