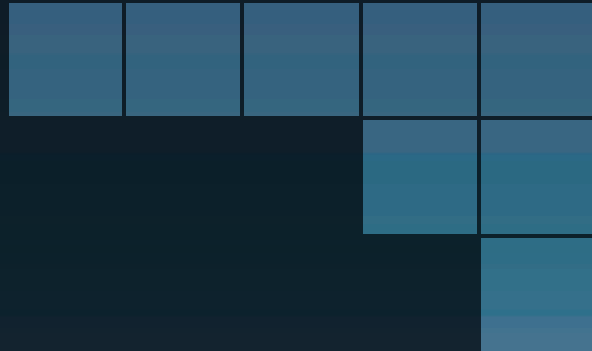


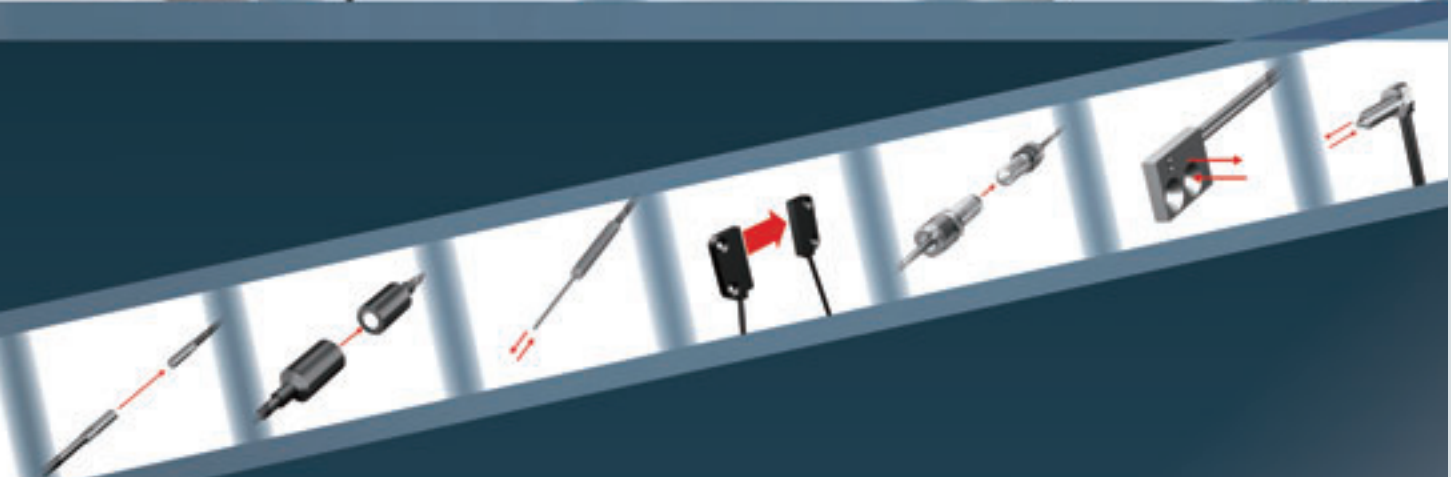
Best Selection

# Fiber Sensor Best Selection Catalog



## Start with Smart!

Easily select the most reliable Fiber Unit  
for your detection conditions.



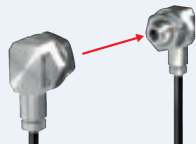
New Product Information

**NEW**

Build-in Lens Oil-resistant Fiber Unit

**E32-T11NF**

→ 38 Page



Smart Fiber Amplifier Units

**E3NX-FA**



Sensor Communications Units

**E3NW**



EtherCAT  
CompoNet  
CC-Link V2

realizing

Fiber Sensor Features 2 Page

Selection Guide 4 Page

Fiber Units

Standard Installation 6 Page

Saving Space 14 Page

Beam Improvements 20 Page

Transparent Objects 34 Page

Environmental Immunity 38 Page

Applications 48 Page

Installation Information 58 Page

Fiber Amplifiers, Communications Unit, and Accessories 62 Page

Technical Guide and Precautions 90 Page

Model Index 98 Page

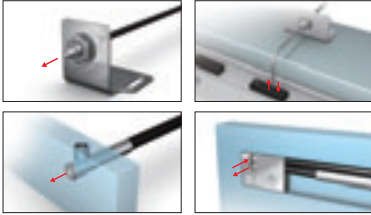
# Easy

Optimal Fiber Sensor for additional Fiber Units for various Installation Conditions,

## “Mounts Anywhere”

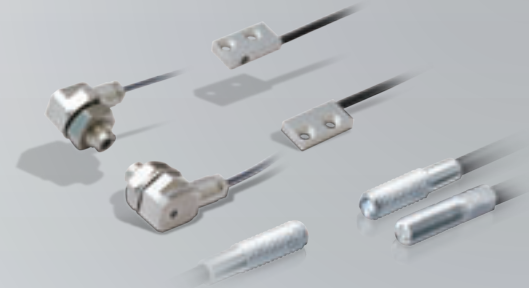
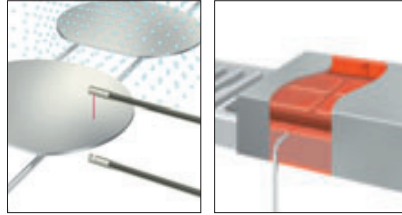
### Wide Variety

Variouly-shaped, compact heads allow installation in any small space.



### Suitable for Harsh Environments

Fiber Units are available for various installation conditions and can be installed as is, even in harsh environments.



## “Achieve Easy Detection in Many Applications”

### Smart Tuning

Just press the button to set the optimum incident level and threshold. Consistent settings are achieved for all users with this ultra-easy procedure.



Press the **TUNE** button **once** with a workpiece and **once** without a workpiece

### Automatic Setting of Optimum Values

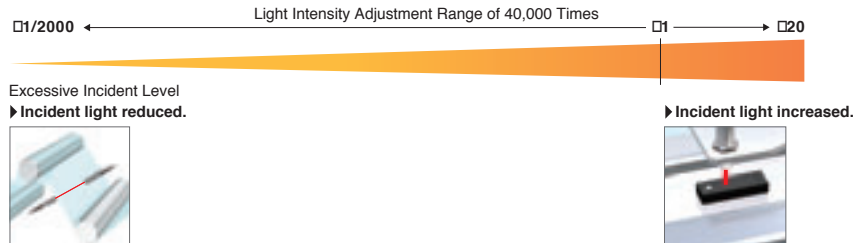
Threshold + Incident Level

5000 9999

Set to the intermediate value between the incident levels with and without a workpiece. Incident level adjustment with and without a workpiece

### Optimum Light Intensity Adjustment from Transparent Objects to Black Workpieces

The incident level is optimized to enable stable detection even for saturated or insufficient incident levels.



NEW

## Smart Fiber Amplifier Units E3NX-FA

62, 64 Page

## “Smooth Wiring and Setting”

### Reduced Wiring

Simply link the Fiber Amplifier Units together for easy wiring and checking.

### Separate Installation

Use the Distributed Sensor Unit for distributed installation to reduce introduction costs and work.

### Easy Setup

Commissioning time is reduced with batch setting from a Touch Panel or backup data for process switchovers.



Fiber

‘Easy’ and ‘Stable’ for