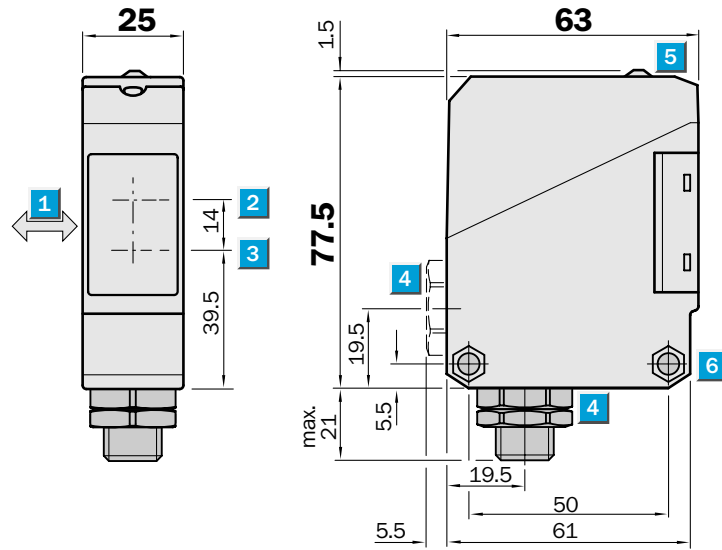


Scanning distance
0...380 mm

Photoelectric proximity switches

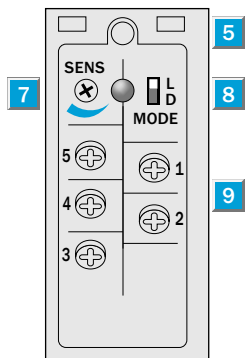
- Reliable detection of dark objects even against light backgrounds
- Scanning distance continuously adjustable
- Terminal chamber or M 12 plug, 4-pin or 5-pin
- Test input
- Pre-failure signalling output

Dimensional drawing



Adjustments possible

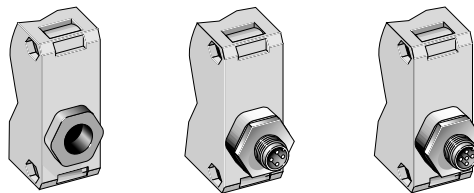
WT 260-P 260
WT 260-P 460
WT 260-P 560



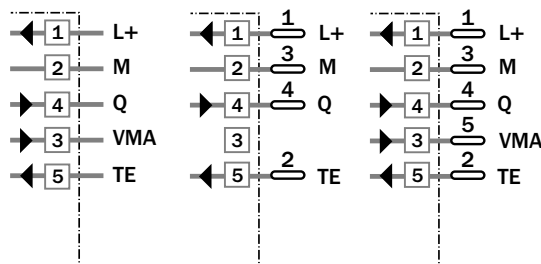
- 1 Standard direction of material being scanned
- 2 Centre of optical axis, receiver
- 3 Centre of optical axis, sender
- 4 Cable entry gland 1/2" PF thread for cable diameters from 6 to 10 mm optionally at bottom or rear; or M 12 equipment plug bottom
- 5 LED signal strength indicator, red
- 6 Through hole \varnothing 5.2 mm on both sides for M 5 hex nut
- 7 Scanning distance adjustment
- 8 Light-/dark-switching (L = light-switching, D = dark-switching)
- 9 Terminals

Connection types

WT 260-P 260	WT 260-P 460	WT 260-P 560
--------------	--------------	--------------

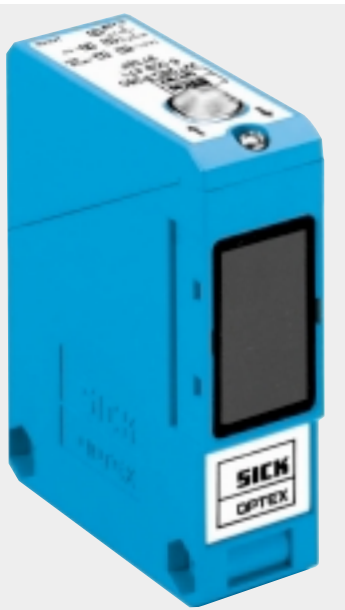


Terminals	4-pin, M 12	5-pin, M 12
-----------	-------------	-------------



Accessories	page
Cable receptacles M 12	496
Mounting brackets*	510

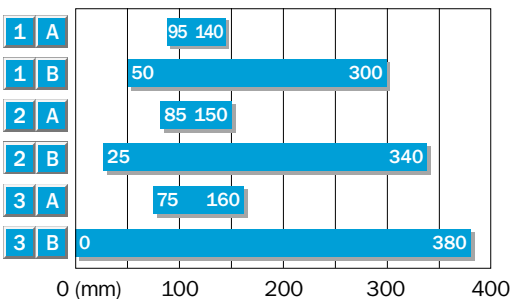
* included with delivery



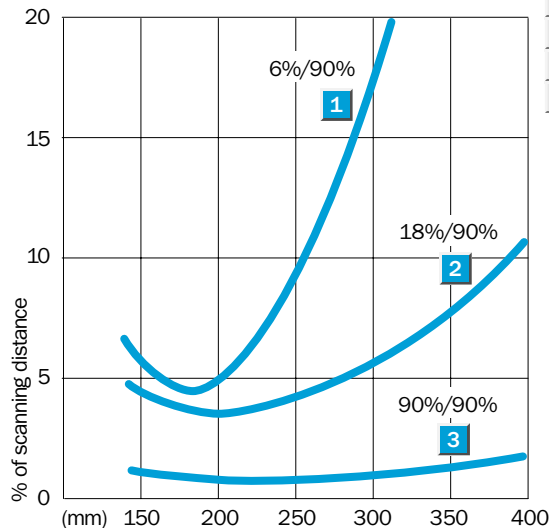
Technical data		WT 260-	P 260	P 460	P 560
Scanning distance	Max.: 0...380 mm, adjustable ¹⁾				
	Min.: 75...160 mm, adjustable ¹⁾				
Scanning distance	Adjustable, potentiometer 270°				
Light source²⁾, light type	LED, infrared light				
Light spot diameter	Approx. 17 mm at 300 mm				
Aperture angle sender	Approx. 1.5°				
Supply voltage V_s	10...30 V DC ³⁾				
Ripple ⁴⁾	≤ 5 V _{SS}				
Current consumption ⁵⁾	≤ 35 mA				
Switching outputs	PNP, open collector: Q				
Output current I _A max.	100 mA				
Light receiver, switching mode	Light-/dark-switching by sliding switch				
Response time ⁶⁾	≤ 2 ms				
Max. switching frequency ⁷⁾	250/s				
Pre-failure signalling output VMA ⁸⁾	100 mA, static				
Test input "TE" sender off	PNP: TE to + V _s				
Connection types	Terminal chamber				
	Plug M 12, 4-pin				
	Plug M 12, 5-pin				
VDE protection class⁹⁾	□				
Circuit protection¹⁰⁾	A, B, C, D				
Enclosure rating	IP 66				
Ambient temperature T_A	Operation - 25 °C...+ 55 °C				
	Storage - 40 °C...+ 70 °C				
Weight	Approx. 120 g				
Material	Housing: ABS; optics: PC				

- | | | | |
|--|------------------------------|---|---------------------------|
| 1) Object with 90 % remission (based on standard white DIN 5033) | 5) Without load | 10) A = V _s connections reverse-polarity protected | 11) Black = 6 % remission |
| 2) Average service life 100,000 h at T _A = + 25 °C | 6) With resistive load | B = Inputs/outputs reverse-polarity protected | Grey = 18 % remission |
| 3) Limit values | 7) With light/dark ratio 1:1 | C = Interference suppression | White = 90 % remission |
| 4) Must be within V _s tolerances | 8) Operating reserve < 50 % | D = Outputs overcurrent and short-circuit protected | |
| | 9) Reference voltage 50 V DC | | |

Scanning distance



- | | |
|---|--|
| 1 | Scanning range on black ¹¹⁾ /background white |
| 2 | Scanning range on grey ¹¹⁾ /background white |
| 3 | Scanning range on white ¹¹⁾ /background white |
| A | Scanning distance control set to MIN |
| B | Scanning distance control set to MAX |



Order information

Type	Part no.
WT 260-P 260	6 009 471
WT 260-P 460	1 011 540
WT 260-P 560	1 011 541