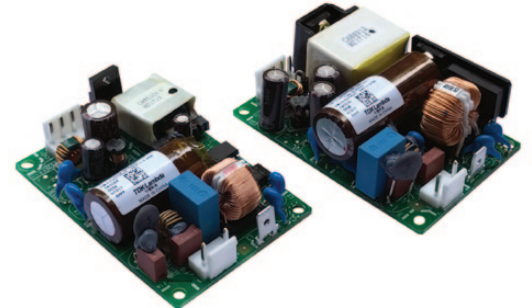




## Single Output 30 to 60W Medical & ITE Power Supplies

Features	Benefits
• High Efficiency, up to 90%	• Easier Thermal Management
• Compact 2" x 3" Footprint	• Space Saving
• Convection Cooled	• Quiet Operation
• Suitable for Class I and II Installations	• Flexible Utilisation
• Medical Approval with 2 x MoPP Isolation	• Suitable for B and BF Rated Equipment



Specification		CUS30M	CUS60M
AC Input Voltage	VAC	85 - 265VAC <sup>(1)</sup>	
Input Frequency	Hz	47 - 63Hz	
Inrush Current (cold start)	A	30A at 115VAC, 60A at 230VAC	
Power Factor	-	Meets EN61000-3-2	
Input Current (115/230VAC)	A	0.6 / 0.4	5V: 0.7 / 0.5, 12-48V: 1.2 / 0.8
Off-load Power Draw	W	<0.3W at 265VAC	<0.5W at 265VAC
Temperature Coefficient	%/°C	<0.02%/°C	
Overcurrent Protection	-	>105% of rated current, Class 2 Limited Power Source <sup>(2)</sup>	
Overvoltage Protection <sup>(3)</sup>	V	> 115% of nominal output	> 120% of nominal output
Hold Up Time (Typical) (115/230VAC)	ms	20 / 100	
Leakage Current	mA	<0.25mA at 265VAC, 60Hz	<0.2mA at 265VAC, 60Hz
Touch Current (Maximum)	µA	100µA at 265VAC, 60Hz	60µA at 265VAC, 60Hz
Remote Sense	-	No	
Operating Temperature	°C	-20°C to +70°C. (-30°C start up) Derate linearly to 50% load from +50°C to +70°C <sup>(4)</sup>	
Storage Temperature	°C	-40°C to +85°C	
Humidity (non condensing)	%RH	10 - 95%RH (Operating & Storage)	
Cooling	-	Convection Cooled	
Withstand Voltage	-	Input to Ground 2kVAC (1xMOPP), Input to Output 4kVAC (2xMOPPs), Output to Ground 1.5kVAC (1xMOPP) suitable for B & BF rated equipment	
Isolation Resistance	MΩ	>100MΩ at 25°C & 70%RH, Output to Ground 500VDC	
Vibration (non operating)	-	10 - 55Hz: 19.6m/s <sup>2</sup> constant sweep 1 min X, Y, Z for 1 hour	
Shock	-	< 196.1 m/s <sup>2</sup> , MIL-STD-810F	
Immunity	-	IEC61000-4-2 (lv4), -3 (lv3), -4 (lv3), -5 (lv3,4), -6 (lv3), -8 (lv4), -11, Criteria A. IEC60601-1-2 Ed4 SEMIF47 (200-240VAC), IEC61000-4-11 (Class 3)	
Line Voltage Dips	-	Criteria A: Vin >120VAC, or <70% load, Criteria B: Vin <120VAC, and >70% load	
Safety Agency Certifications	-	EN/IEC/UL/ES/CSA60601-1, EN/IEC/UL/CSA60950-1, CE Mark, IEC60335-1	
Altitude	m	5,000m, derate operating ambient by 5°C/1000m above 3,000m	
Conducted & Radiated EMI	-	EN55011-B, EN55032-B, FCC Class B	
Weight (Typ)	g	62	120
Size (LxWxH)	mm	76.2 x 50.8 x 24.2	76.2 x 50.8 x 26.7
Warranty	yrs	3	

**Notes:**

(1) CUS30M: Derate linearly to 80% load from 115VAC to 85VAC. CUS60M: Derate linearly to 80% load from 100VAC to 85VAC

(2) All models except CUS60M-5

(3) Cycle AC to reset

(4) CUS30M-18 and -48, CUS60M-5 and -12: Derate linearly to 50% load from +45 to +70°C

## Model Selector

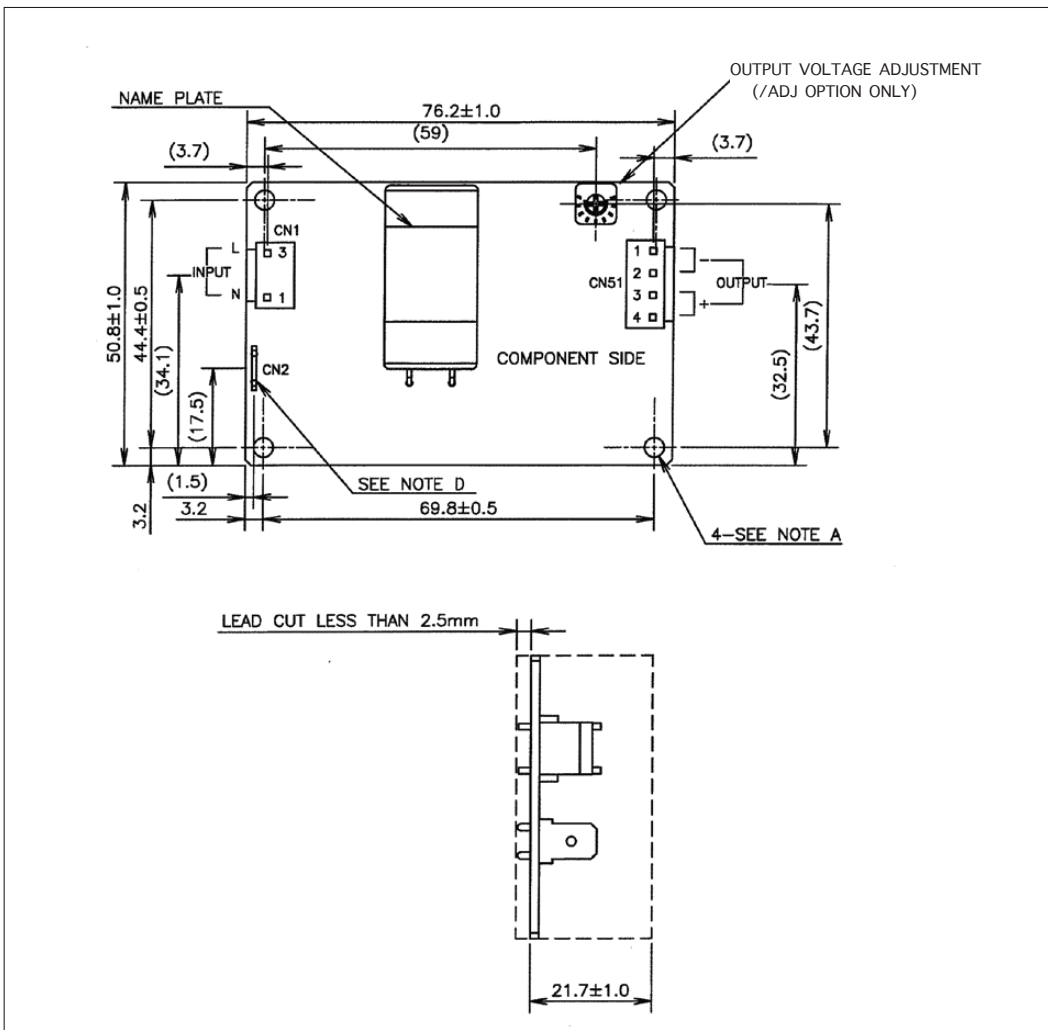
Model	Voltage	Max Current (A)	Max Power (W)	Load Reg (mV)	Line Reg (mV)	Ripple Noise (mV) <sup>(5)</sup>	Efficiency (typ) % <sup>(6)</sup>	Average Active Efficiency (typ) % <sup>(6)</sup>
CUS60M-5*	5V	6.0	30.0	100	20	120	81 / 81	81 / 80
CUS30M-12	12V	2.5	30.0	120	48	120	87 / 88	87 / 87
CUS60M-12	12V	5.0	60.0	120	48	120	87 / 88	87 / 86
CUS60M-15*	15V	4.0	60	120	60	150	88 / 89	87 / 87
CUS60M-18*	18V	3.25	60.3	144	72	150	88 / 89	87 / 87
CUS30M-24	24V	1.25	30.0	192	96	150	88 / 90	87 / 87
CUS60M-24	24V	2.5	60.0	192	96	150	89 / 90	88 / 87
CUS30M-48	48V	0.63	30.24	384	192	200	88 / 90	87 / 87
CUS60M-48*	48V	1.25	60.0	384	192	200	89 / 90	89 / 88

### Notes:

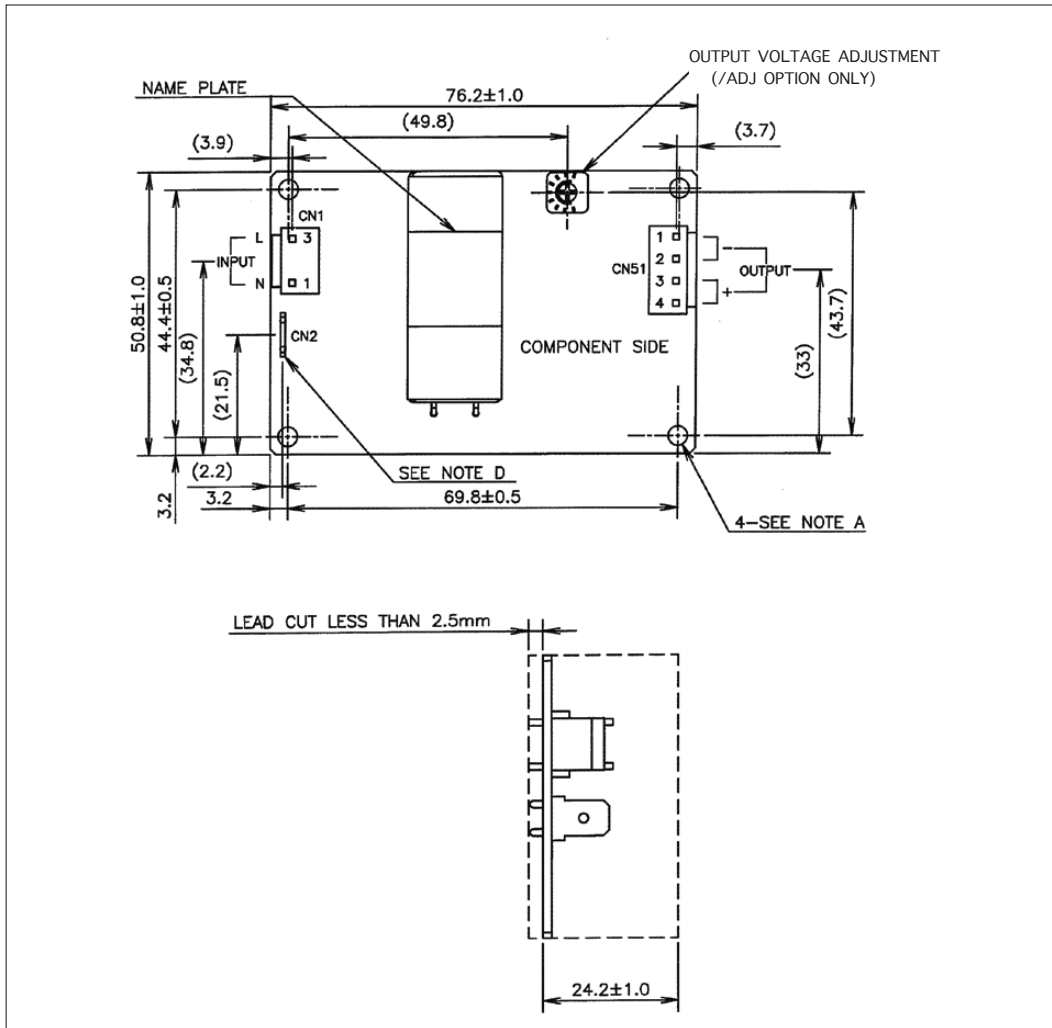
(5) Ripple level increases at light loading to meet new efficiency standards (6) 115/230VAC

\* Available Q2 2018.

## Outline Drawing CUS30M Series



## Outline Drawing CUS60M Series



### Options (available on request)

Suffix	Description
Blank	Open Frame Construction, Fixed Output
/ADJ	Output Voltage Adjustment Potentiometer (± 10% Range)



## TDK-Lambda France SAS

3 Avenue du Canada  
Parc Technopolis  
Bâtiment Sigma  
91940 les Ulis  
France  
Tel: +33 1 60 12 71 65  
Fax: +33 1 60 12 71 66  
france@fr.tdk-lambda.com  
www.fr.tdk-lambda.com



## Italy Sales Office

Via dei Lavoratori 128/130  
20092 Cinisello Balsamo (MI)  
Italy  
Tel: +39 02 61 29 38 63  
Fax: +39 02 61 29 09 00  
info.italia@it.tdk-lambda.com  
www.it.tdk-lambda.com



## Netherlands

info@nl.tdk-lambda.com  
www.nl.tdk-lambda.com



## TDK-Lambda Germany GmbH

Karl-Bold-Strasse 40  
77855 Achern  
Germany  
Tel: +49 7841 666 0  
Fax: +49 7841 5000  
info.germany@de.tdk-lambda.com  
www.de.tdk-lambda.com



## Austria Sales Office

Aredstrasse 22  
2544 Leobersdorf  
Austria  
Tel: +43 2256 655 84  
Fax: +43 2256 645 12  
info@at.tdk-lambda.com  
www.de.tdk-lambda.com



## Switzerland Sales Office

Bahnhofstrasse 50  
8305 Dietlikon  
Switzerland  
Tel: +41 44 850 53 53  
Fax: +41 44 850 53 50  
info@ch.tdk-lambda.com  
www.de.tdk-lambda.com



## Nordic Sales Office

Haderslevvej 36B  
DK-6000 Kolding  
Denmark  
Tel: +45 2911 9556  
info@dk.tdk-lambda.com



## TDK-Lambda UK Ltd.

Kingsley Avenue  
Ilfracombe  
Devon EX34 8ES  
United Kingdom  
Tel: +44 (0) 12 71 85 66 66  
Fax: +44 (0) 12 71 86 48 94  
powersolutions@uk.tdk-lambda.com  
www.uk.tdk-lambda.com



## TDK-Lambda Ltd.

Kibbutz  
Givat Hashlosha 48800  
Israel  
Tel: +9 723 902 4333  
Fax: +9 723 902 4777  
info@tdk-lambda.co.il  
www.tdk-lambda.co.il



## C.I.S.

**Commercial Support:**  
Tel: +7 (495) 665 2627  
**Technical Support:**  
Tel: +7 (812) 658 0463  
info@tdk-lambda.ru  
www.tdk-lambda.ru

## Local Distribution

