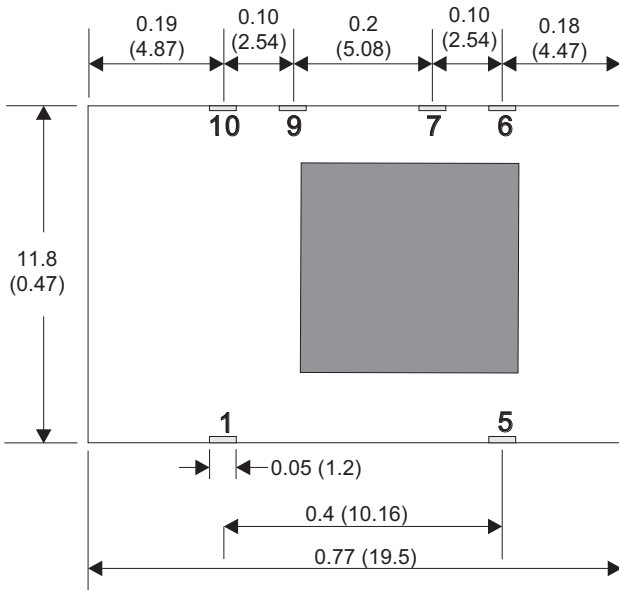
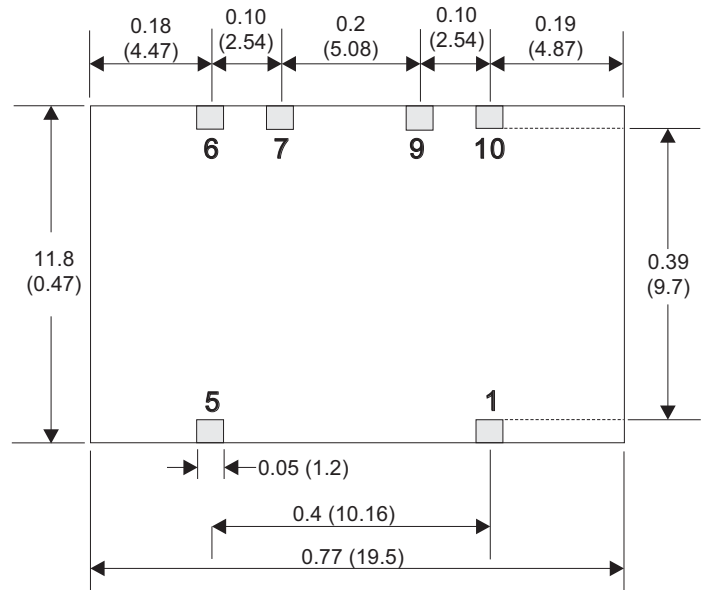


### Mechanical Details

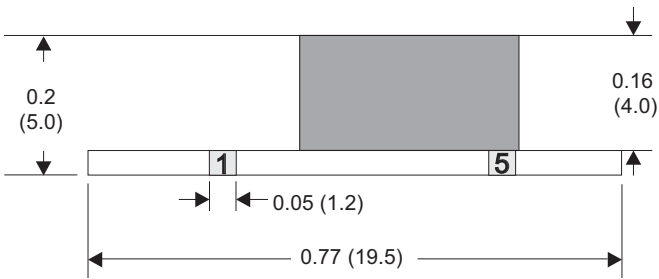
Top View



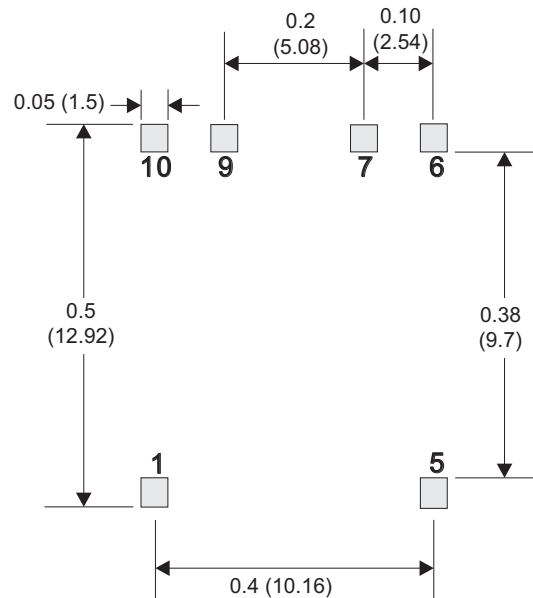
Bottom View



Side View



Solder Pad Dimension



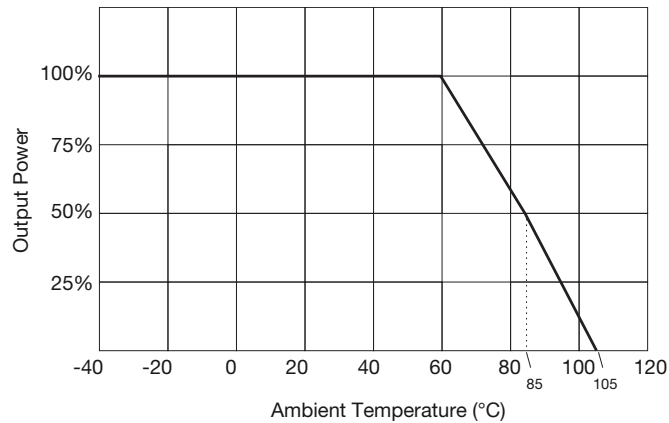
Pin Connections	
Pin	Function
1	+Vin
5	+Vout
6	Trim
7	Ground
9	Ground
10	Remote On/Off

### Notes

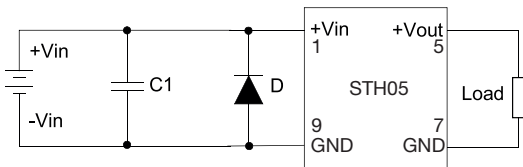
- All dimensions are in inches (mm)
- Weight: 0.0039 lbs (1.4 g) approx.
- Pin Profile Tolerance:  $\pm 0.004$  ( $\pm 0.1$ )
- Pin Pitch Tolerance:  $\pm 0.01$  ( $\pm 0.25$ )
- Other Tolerances:  $\pm 0.02$  ( $\pm 0.5$ )
- PCB tracks should not run under the STH05 to avoid interference and the risk of short circuit.

### Application Notes

#### Derating Curve



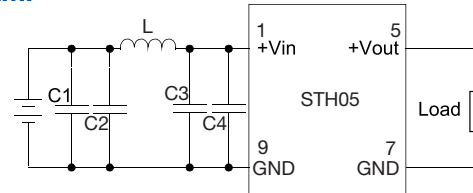
#### EFT & Surge



Suggested Filter : Nippon - chemi - con 330 $\mu$ F 100V KY series and a TVS, 3KW, 70V.

C1	D1
330 $\mu$ F, 100 V	SMDJ 7.0 A

#### EMI



Input filter components (Cin, C1, L1) are used to help meet EMI requirement for the module. These components should be mounted as close as possible to the module; and all leads should be minimized to decrease radiated noise.

C1, C2	L1	C3, C4
1206, 2.2 $\mu$ F, 100V	56 $\mu$ H	1206, 2.2 $\mu$ F, 100 V

#### Switching Frequency

Input Voltage	Switching Frequency	Notes
15 V	540 KHz	Typical values at 20% load. Typically 50 KHz at 10% load for all variants.
12 V	480 KHz	
9 V	390 KHz	
7.2 V	300 KHz	
6.5 V	290 KHz	
5.0 V	220 KHz	
3V3	180 KHz	