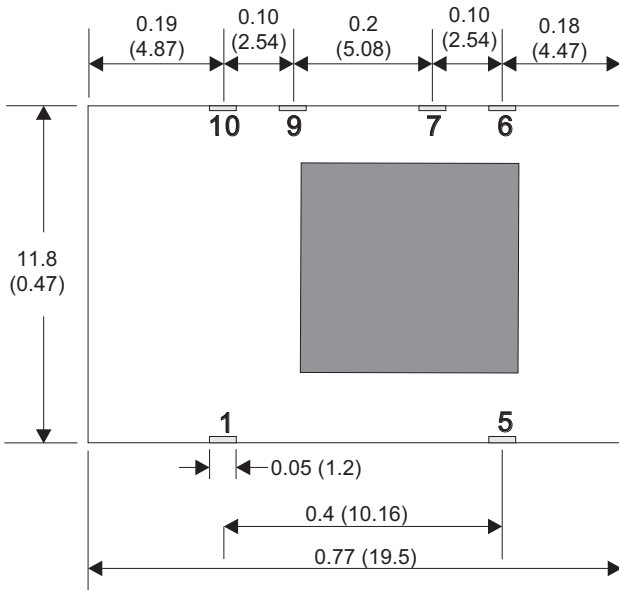
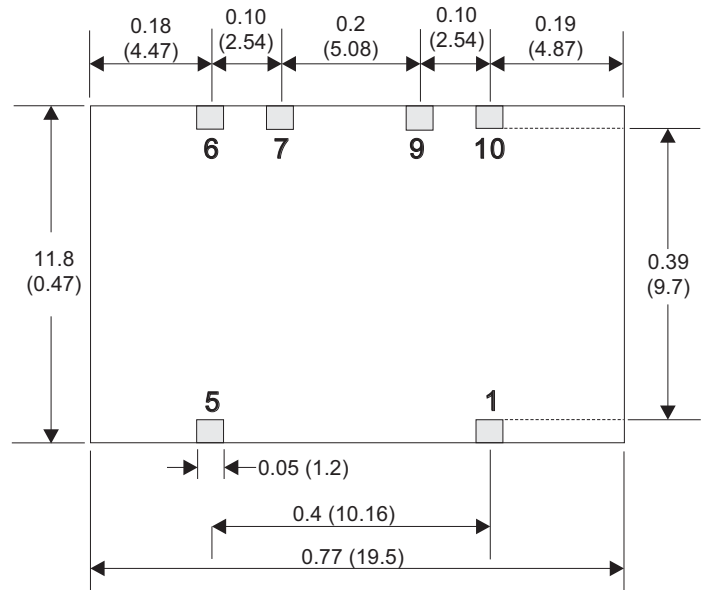


Mechanical Details

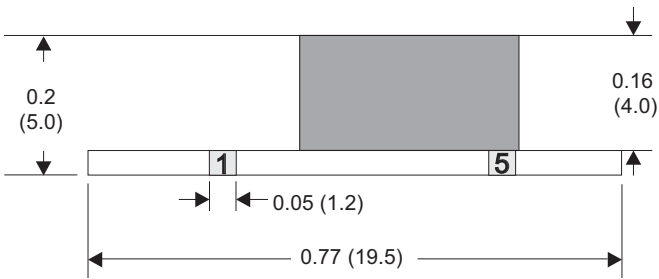
Top View



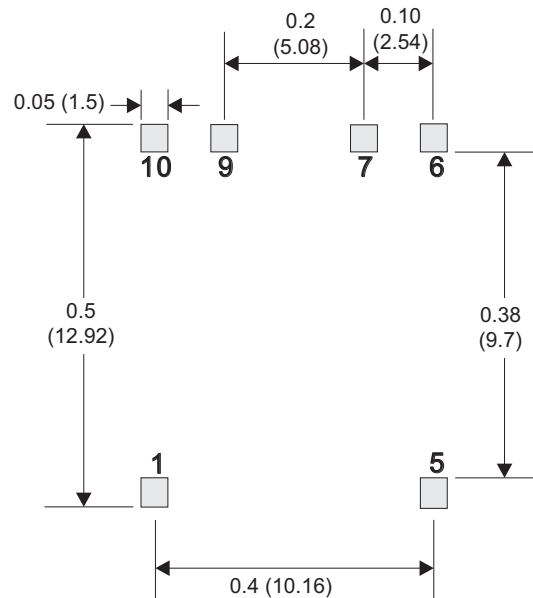
Bottom View



Side View



Solder Pad Dimension



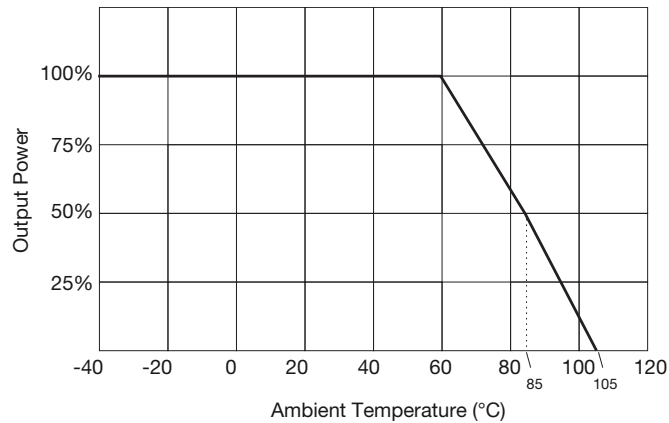
| Pin Connections | |
|-----------------|---------------|
| Pin | Function |
| 1 | +Vin |
| 5 | +Vout |
| 6 | Trim |
| 7 | Ground |
| 9 | Ground |
| 10 | Remote On/Off |

Notes

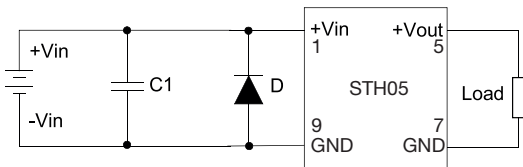
- All dimensions are in inches (mm)
- Weight: 0.0039 lbs (1.4 g) approx.
- Pin Profile Tolerance: ± 0.004 (± 0.1)
- Pin Pitch Tolerance: ± 0.01 (± 0.25)
- Other Tolerances: ± 0.02 (± 0.5)
- PCB tracks should not run under the STH05 to avoid interference and the risk of short circuit.

Application Notes

Derating Curve



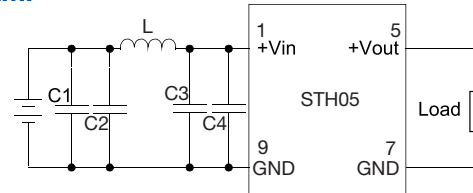
EFT & Surge



Suggested Filter : Nippon - chemi - con 330 μ F 100V KY series and a TVS, 3KW, 70V.

| C1 | D1 |
|--------------------|------------|
| 330 μ F, 100 V | SMDJ 7.0 A |

EMI



Input filter components (Cin, C1, L1) are used to help meet EMI requirement for the module. These components should be mounted as close as possible to the module; and all leads should be minimized to decrease radiated noise.

| C1, C2 | L1 | C3, C4 |
|-------------------------|------------|--------------------------|
| 1206, 2.2 μ F, 100V | 56 μ H | 1206, 2.2 μ F, 100 V |

Switching Frequency

| Input Voltage | Switching Frequency | Notes |
|---------------|---------------------|---|
| 15 V | 540 KHz | Typical values at 20% load. Typically 50 KHz at 10% load for all variants. |
| 12 V | 480 KHz | |
| 9 V | 390 KHz | |
| 7.2 V | 300 KHz | |
| 6.5 V | 290 KHz | |
| 5.0 V | 220 KHz | |
| 3V3 | 180 KHz | |