

General Specifications

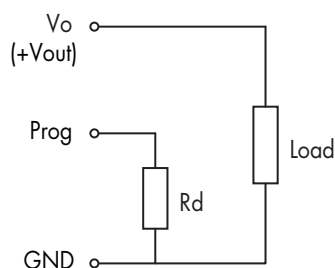
Temperature ranges	- Operating - Storage	-40°C to +85°C -55°C to +125°C
Derating		see application note
Over temperature protection		at +125°C typ.
Humidity (non condensing)		5 – 95 % rel H max.
Reliability, calculated MTBF (MIL-HDBK-217F at +25°C, ground begin)	6 A models: 10 A / 16 A models:	> 9 mio. h > 3.3 mio. h
Switching frequency		300 kHz typ. (pulse width modulation - PWM)
Remote On/Off (reference to GND)		On: 1 VDC to Vin max. or open circuit. Off: 0 to 0.3 VDC

Physical Specifications

Weight	6 A models: 10 A / 16 A models:	2.8 g 6.0 g
Soldering profile	- SIL - Version - SMT - Version	max. 265°C / 10 sec. (wave soldering) peak temp. 245°C for 10 sec. max., 217°C for 90 sec. max. (Convection reflow solder process is recommended)
Moisture Sensitivity Level	- SMT - Version	2a

Supporting documents: www.tracopower.com/overview/tos

Output Voltage Adjustment



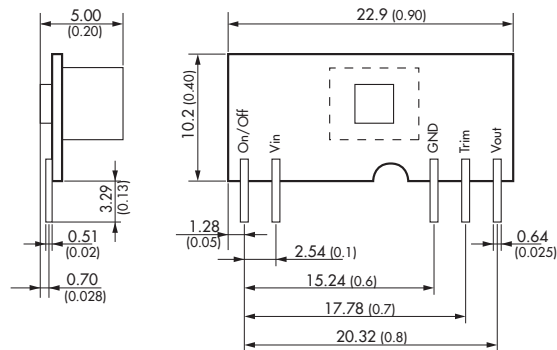
5 VDC input models: $R_d [\text{Ohm}] = \frac{21070}{V_o - 0.7525} - 5110$

12 VDC input models: $R_d [\text{Ohm}] = \frac{10570}{V_o - 0.7525} - 1000$

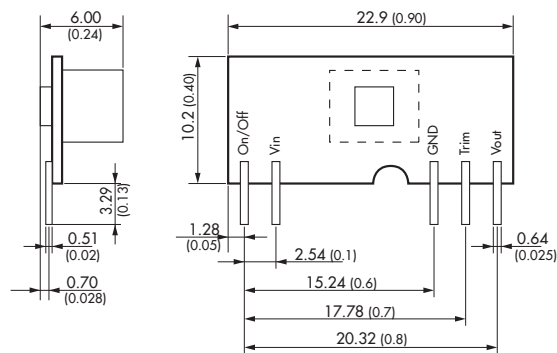
All specifications valid at nominal input voltage, full load and +25°C after warm-up time unless otherwise stated.

Outline Dimensions mm (inches)

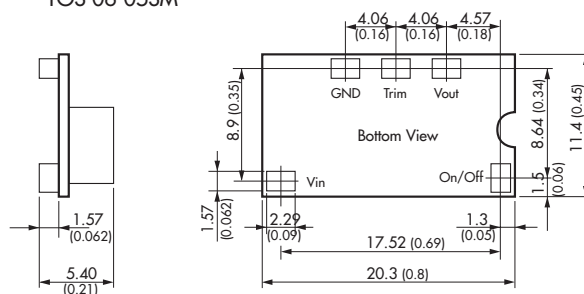
TOS 06-05SIL



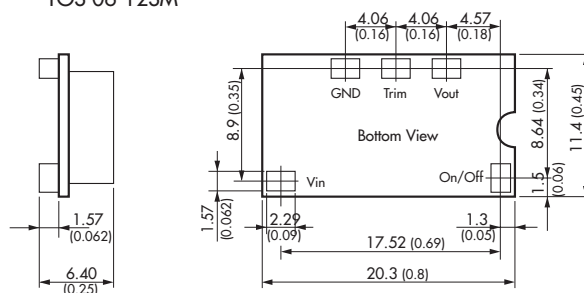
TOS 06-12SIL



TOS 06-05SM



TOS 06-12SM



All specifications valid at nominal input voltage, full load and +25°C after warm-up time unless otherwise stated.