

### 3. Description

“Wachendorff Anzeigen-Regler“ is a dedicated software package for the configuration of Wachendorff panel meters and controller. It comes together with mini-USB cable and Programming module as part of the programming kit.



Figure 1: Wachendorff Software with Programming module

If compared to manual mode, this new programming kit offers several advantages:

- user-friendliness;
- simultaneous visualization of all parameters;
- real-time monitoring of the device's operation to evaluate also how the settings are affecting the control action;
- possibility to save the configurations on files and consequently to download them quickly on several devices.

### Installation and minimum requirements

Please download the software from our download section under [http://www.wachendorff.de/wp/dpc\\_dow\\_epg\\_sof.html](http://www.wachendorff.de/wp/dpc_dow_epg_sof.html) and save the file in a dedicated folder on your PC. Execute “Setup.exe” and the installation process will start. Once it has been completed, the software will open a window which allows the user to install also the drivers of the Programming module.

„Wachendorff Anzeigen-Regler“ relies on Microsoft .NET Framework 2.0. Should this component not be already available on your PC, it will be automatically installed.

**Compatible/Supported Operating Systems:** Windows 2000 Service Pack 3; Windows 98; Windows 98 Second Edition; Windows ME; Windows Server 2003; Windows Vista Business; Windows Vista Business 64-Bit Edition; Windows Vista Enterprise; Windows Vista Enterprise 64-Bit Edition; Windows Vista Home Basic; Windows Vista Home Basic 64-Bit Edition; Windows Vista Home Premium; Windows Vista Home Premium 64-Bit Edition; Windows Vista Starter; Windows Vista Ultimate; Windows Vista Ultimate 64-Bit Edition; Windows XP Service Pack 3, Windows 7 32/64 Bit

**Free space on disk:** 280 MB (x86), 610 MB (x64).

## 4. How to start

Once the software and drivers have been successfully installed, the system is ready to use. The following paragraph will suggest some basic steps in order to get acquainted with the application and verify the correct operation of all parts.

**Connect the Programming module to an USB port of your PC by means of the cable supplied with the kit.**

- A) If drivers have been installed correctly, after a few seconds the system will confirm the new hardware as shown in Figure 2.

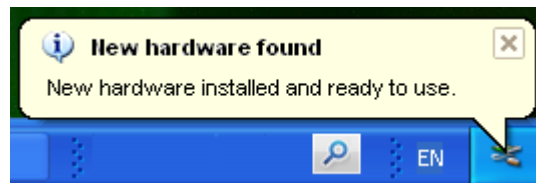


Figure 2:

- B) Connect Programming module with the unit.

The kit will be delivered with two different Programming modules. The module with the sticker “UA-Serie” is suitable for Wachendorff Universal displays series UAxxxxxx. The module with the sticker “UR/TH/TI/VZ/ZD/TA-Serie” is usable for units of the series URxxxxxx, TAxxxxxx, THxxxxxx, TIxxxxxx, VZxxxxxx and ZDxxxxxx. The correct positioning of the Programming module on the controller UR484802 will be shown in figure 3. The USB power is enough to turn the device on when the communication starts (UR3274Sx from 2.xx version).



Figure 3: Inserting Programming module on UR4848xx

- C) Start Wachendorff Anzeigen-Regler Software

The toolbar includes an area labelled as “Serial port:” which contains all options related to communication with the device. Make sure that option “Auto” is selected and that value for field “Slave ID” is 255 as shown in Figure 4

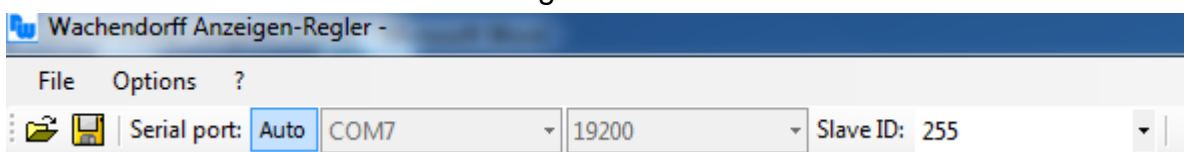


Figure 4: Communication is automatically managed by the software.