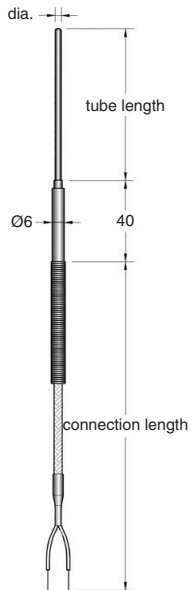


## Dimensions

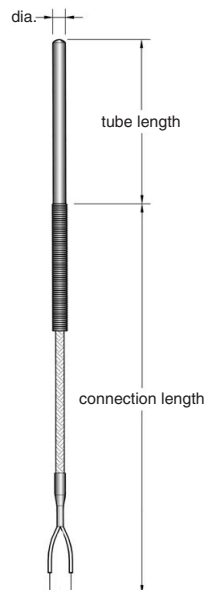
(Detailed dimension drawings are available for each model on request)

### Smooth tube types (thermocouples T, J and K and PT100)

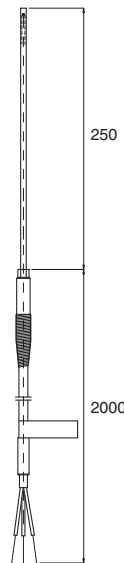
E52-ET\_



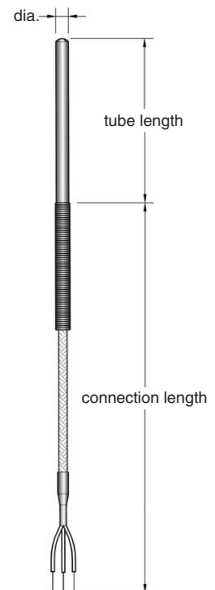
E52-ELT\_



E52-EP\_

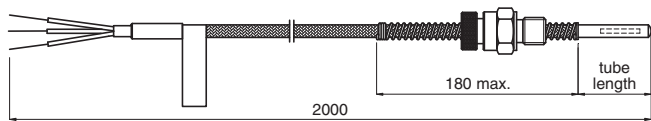


E52-ELP\_



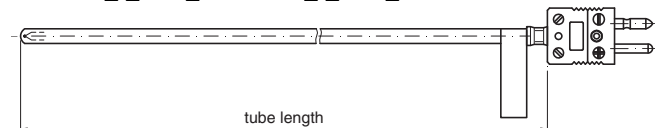
### Bayonet mounting types (PT100)

E52-EP6-\_-2-B-\_-



### Compensation connector 1 types (thermocouples J and K)

E52-ETJ-\_-C1-\_/E52-ETK-\_-C1-\_-

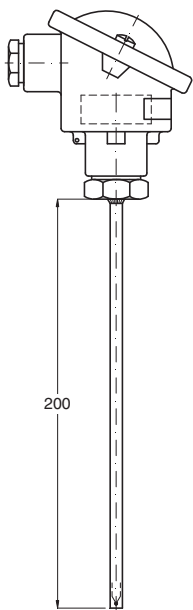


Note: compatible with female connectors E52-EACC-JF1-\_/E52-EACC-KF1-\_-

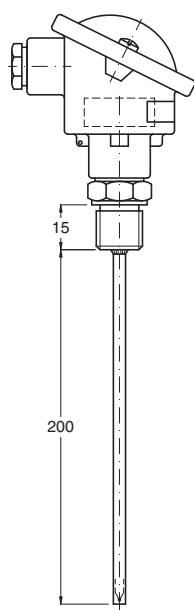
### Enclosed terminal types (thermocouples J and K and PT100)

E52-E-\_-T2-\_-

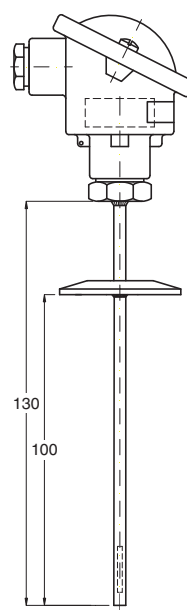
Smooth tube



G $\frac{1}{2}$ " mounting

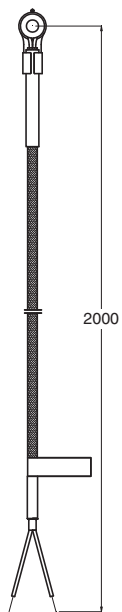


Clamp mounting

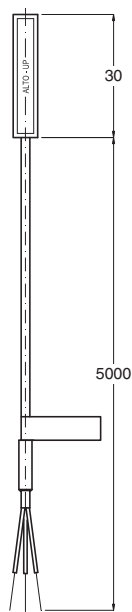


Surface temperature measurement types

E52-ETJS1-B

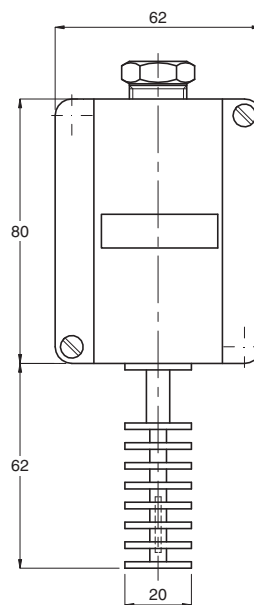


E52-ESTPCPAN\_

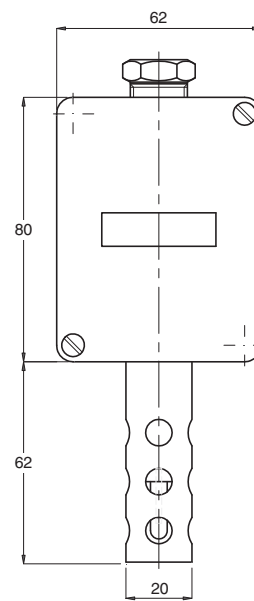


Environment temperature measurement types

E52-EPE1-B

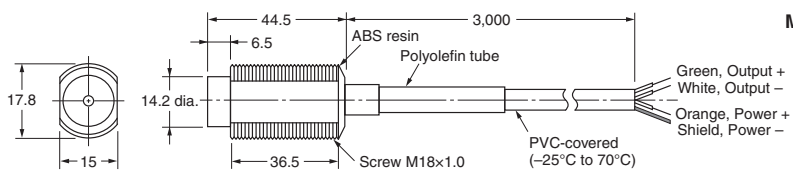
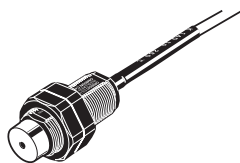


E52-EPE2-B

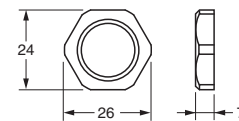


Non-contact – Infrared sensor types

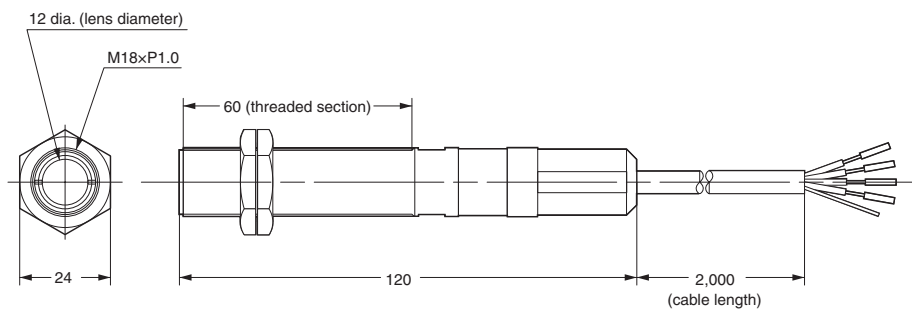
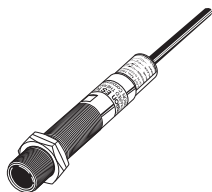
ES1B



Mounting Lock Nuts (Two) (Provided)



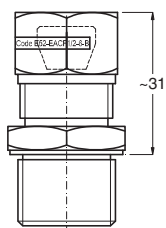
ES1C



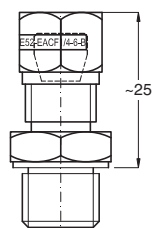
Accessories

Compression fittings

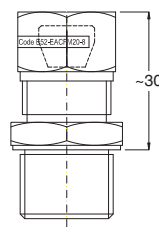
E52-EACF1/2\_



E52-EACF1/4\_

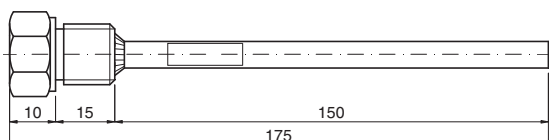


E52-EACFM20



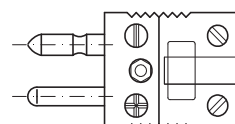
Thermowells

E52-EATW\_



Compensation connectors

E52-EACC- M \_-



E52-EACC- F \_-

