

Surge suppressor, varistor, 24 ... 48 V AC, 24 ... 70 V DC, for contactors Size S2, S3



General technical data		
Product brand name		SIRIUS
Product designation		surge suppressor
Size of contactor		S2, S3
Design of the surge suppressor		with varistor
Ambient temperature		
<ul style="list-style-type: none"> <li>during storage</li> </ul>	°C	-40 ... +80
<ul style="list-style-type: none"> <li>during operation</li> </ul>	°C	-25 ... +60

Control circuit/ Control		
Type of voltage of the control supply voltage		AC/DC
Control supply voltage frequency		
<ul style="list-style-type: none"> <li>1 rated value</li> </ul>	Hz	50
<ul style="list-style-type: none"> <li>2 rated value</li> </ul>	Hz	60
Control supply voltage 1		
<ul style="list-style-type: none"> <li>at DC</li> </ul>	V	24 ... 70
<ul style="list-style-type: none"> <li>at AC</li> </ul>		
<ul style="list-style-type: none"> <li>— at 50 Hz</li> </ul>	V	24 ... 48
<ul style="list-style-type: none"> <li>— at 60 Hz</li> </ul>	V	48 ... 24

## Installation/ mounting/ dimensions

Mounting position		any
Mounting type		clip-on
Width	mm	30
Height	mm	30
Depth	mm	14.5

## Certificates/ approvals

Certificate of suitability	CE / UL / CSA / CCC	
----------------------------	---------------------	--

General Product Approval	EMC	Declaration of Conformity
--------------------------	-----	---------------------------



CSA



UR



RCM



EG-Konf.

[Miscellaneous](#)

Test Certificates	Shipping Approval	other
-------------------	-------------------	-------

[Type Test Certificates/Test Report](#)



BUREAU VERITAS



PRS



RMRS

[Confirmation](#)

## Further information

**Information- and Downloadcenter (Catalogs, Brochures,...)**

<https://www.siemens.com/ic10>

**Industry Mall (Online ordering system)**

<https://mall.industry.siemens.com/mall/en/en/Catalog/product?mlfb=3RT2936-1BB00>

**Cax online generator**

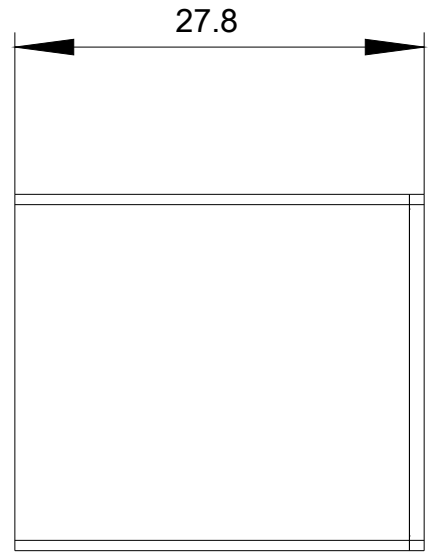
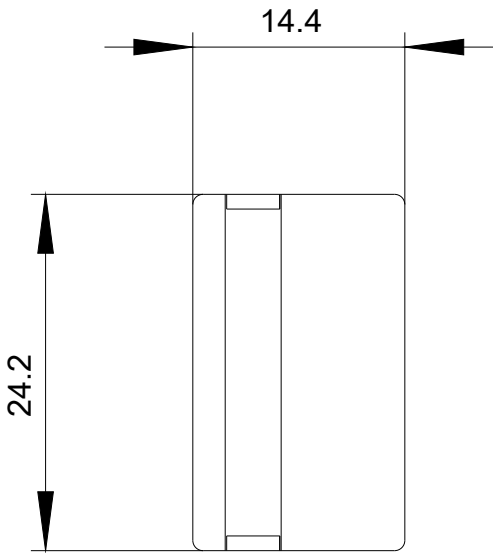
<http://support.automation.siemens.com/WW/CAXorder/default.aspx?lang=en&mlfb=3RT2936-1BB00>

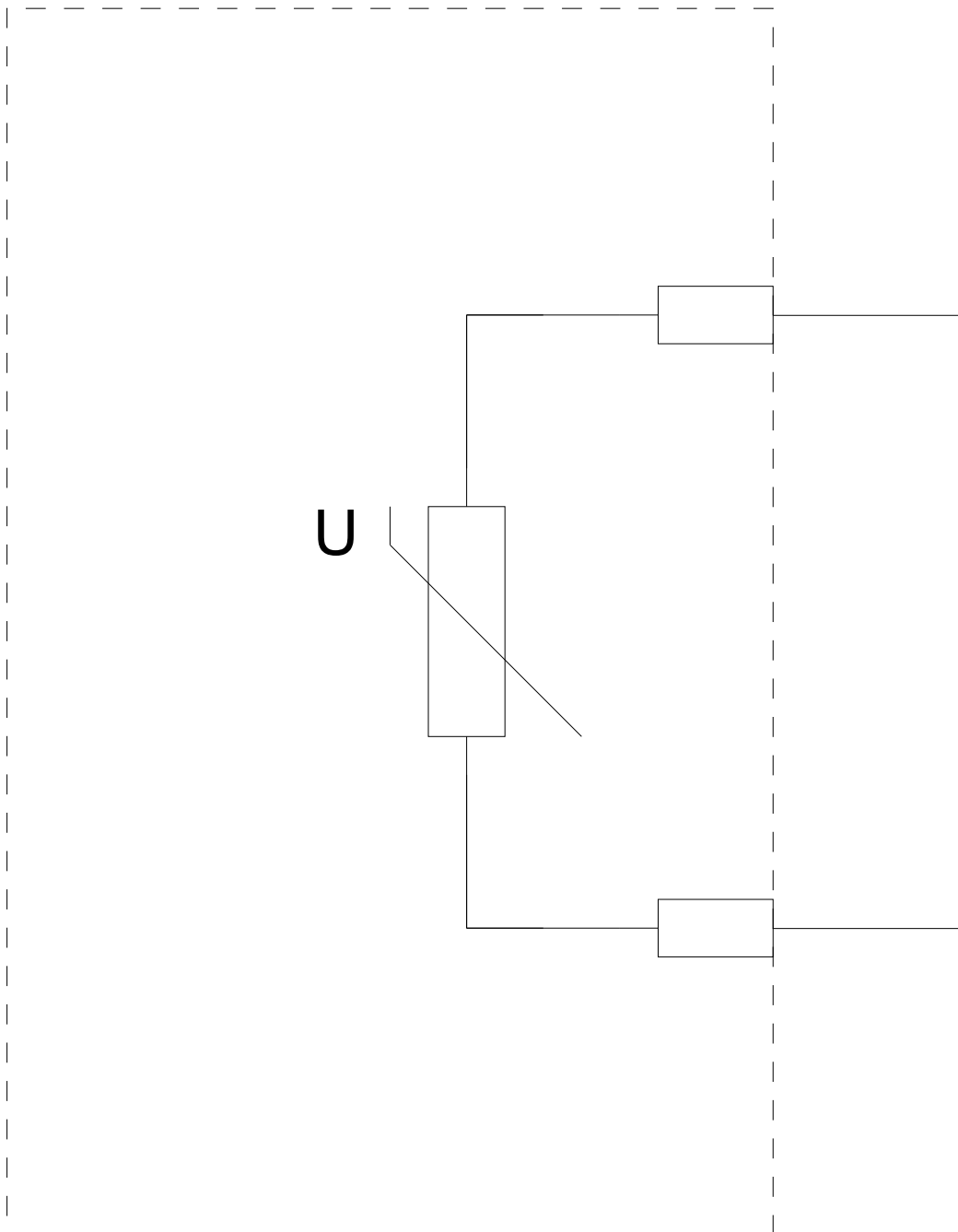
**Service&Support (Manuals, Certificates, Characteristics, FAQs,...)**

<https://support.industry.siemens.com/cs/ww/en/ps/3RT2936-1BB00>

**Image database (product images, 2D dimension drawings, 3D models, device circuit diagrams, EPLAN macros, ...)**

[http://www.automation.siemens.com/bilddb/cax\\_de.aspx?mlfb=3RT2936-1BB00&lang=en](http://www.automation.siemens.com/bilddb/cax_de.aspx?mlfb=3RT2936-1BB00&lang=en)





last modified:

09/23/2020