

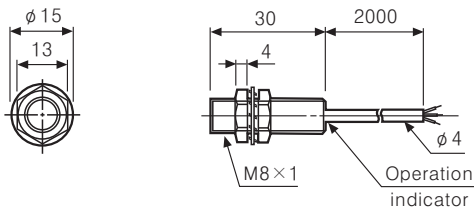
# Cylindrical Type Proximity Sensor

## Dimensions

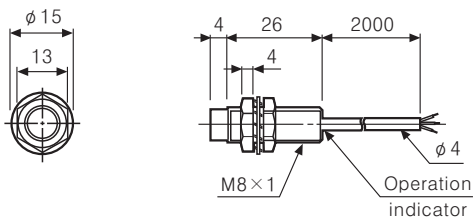
(Unit:mm)

(A)	Photo electric sensor
(B)	Fiber optic sensor
(C)	Door/Area sensor
(D)	<b>Proximity sensor</b>
(E)	Pressure sensor
(F)	Rotary encoder
(G)	Connector/Socket
(H)	Temp. controller
(I)	SSR/Power controller
(J)	Counter
(K)	Timer
(L)	Panel meter
(M)	Tacho/Speed/Pulse meter
(N)	Display unit
(O)	Sensor controller
(P)	Switching power supply
(Q)	Stepping motor & Driver & Controller
(R)	Graphic/Logic panel
(S)	Field network device
(T)	Production stoppage models & replacement

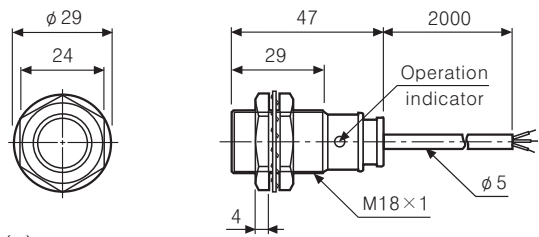
### ●PR(T)08-1.5D□



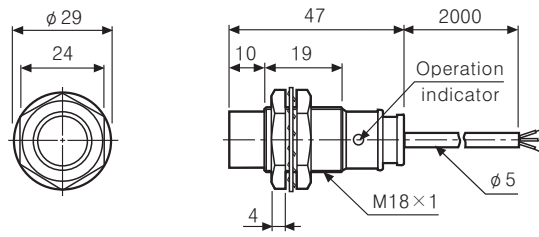
### ●PR(T)08-2D□



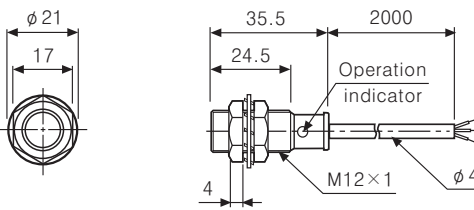
### ●PR(T)18-5D□



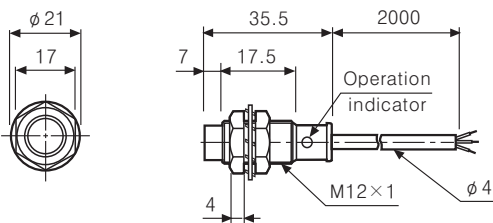
### ●PR(T)18-8D□



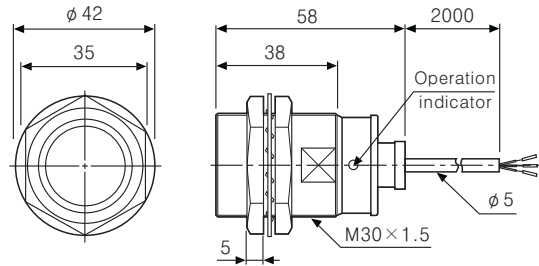
### ●PRS12-2D□



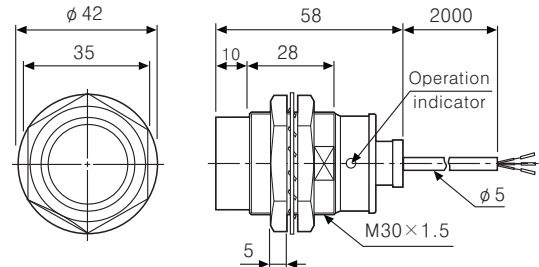
### ●PRS12-4D□



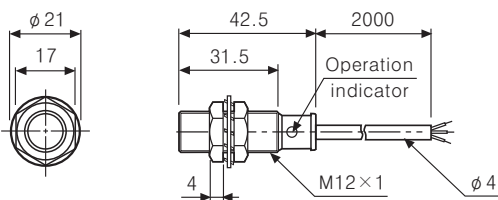
### ●PR(T)30-10D□



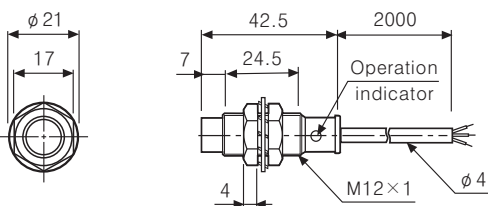
### ●PR(T)30-15D□



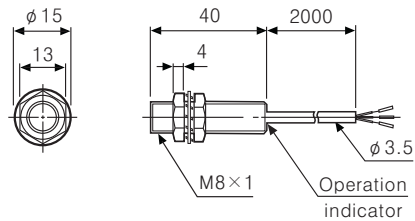
### ●PR(T)12-2D□



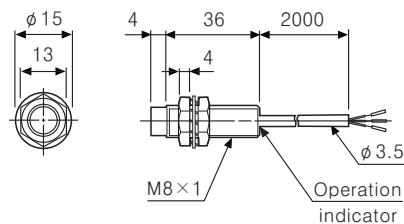
### ●PR(T)12-4D□



### ●PRL08-1.5D□



### ●PRL08-2D□

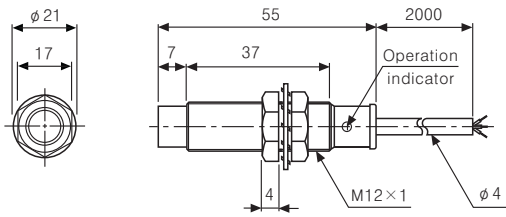


# PR Series

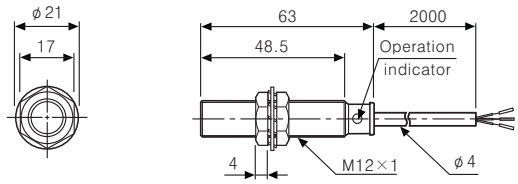
## Dimensions

(Unit:mm)

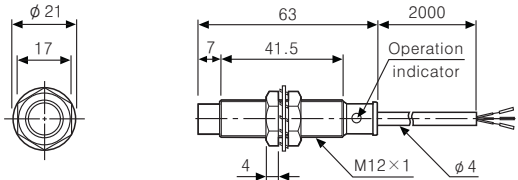
●PRL12-4D□



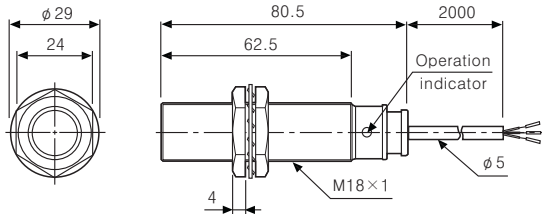
●PR12-2A□



●PR12-4A□

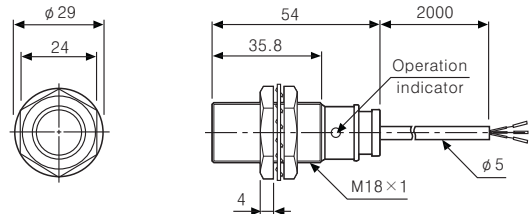


●PRL18-5D□

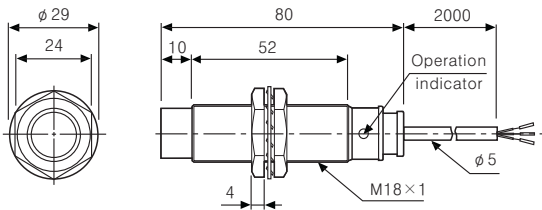


●PRL18-5A□

●PR18-5A□

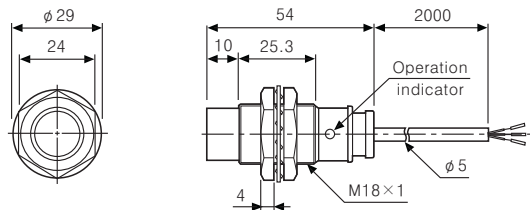


●PRL18-8D□

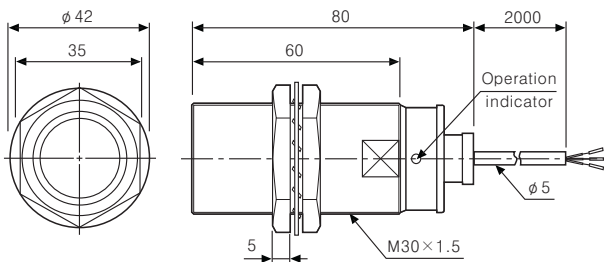


●PRL18-8A□

●PR18-8A□

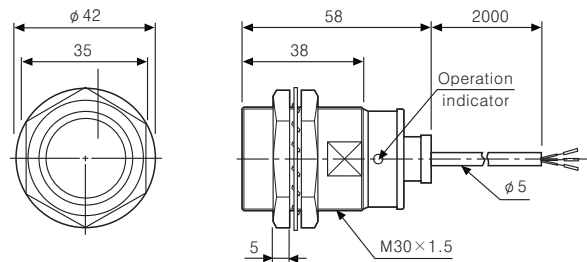


●PRL30-10D□

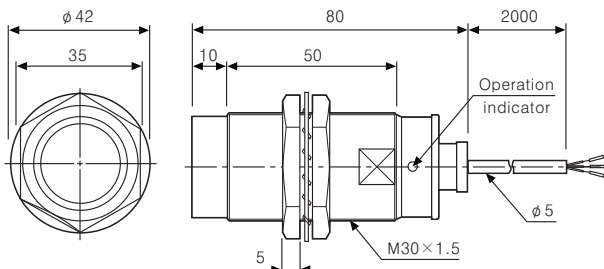


●PRL30-10A□

●PR30-10A□



●PRL30-15D□



●PRL30-15A□

●PR30-15A□

