



EPM-1520 EPM-1530

18/24-bit LVDS Transmitter Module 18/24-bit LVDS Receiver Module

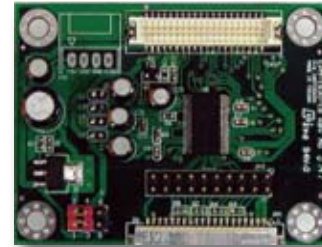
EPM-1520



Features

- Supports 20 to 85 MHz shift clock
- Up to 2.38 Gbps throughput
- Up to 297.5 Mbytes/sec bandwidth
- 345 mV (typ) swing LVDS devices for low EMI
- Compatible with TIA/EIA-644 LVDS standard
- Flat Panel/CRT interface:
 - NS DS90C385 or equivalent transmitter chipset (EPM-1520-24)
 - NS DS90C365 or equivalent transmitter chipset (EPM-1520-18)
 - Supports VGA, SVGA, XGA and single/dual pixel SXVGA display type
- 40-pin DFB-40DP-1.25V (Input)
- Operating temperature: 32 to 140°F (0 to 60°C)
- Size (L x W): 2.6" x 2.0" (65 mm x 50 mm)

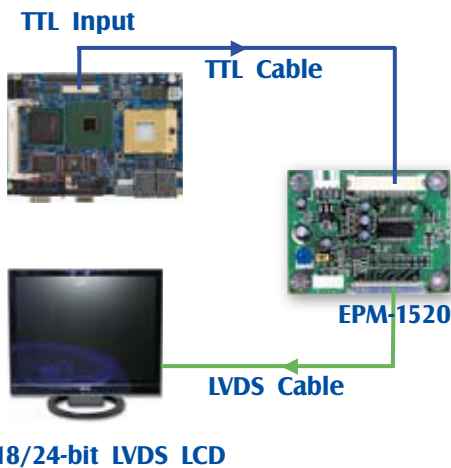
EPM-1530



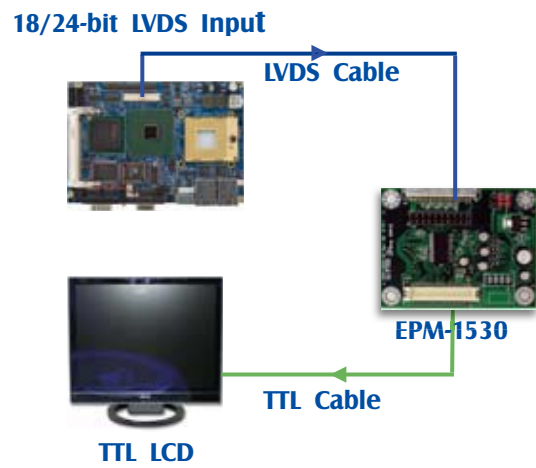
Features

- Supports 20 to 85 MHz shift clock
- Up to 2.38 Gbps throughput
- Up to 297.5 Mbytes/sec bandwidth
- 345 mV (typ) swing LVDS devices for low EMI
- Compatible with TIA/EIA-644 LVDS standard
- Flat Panel/CRT interface:
 - NS DS90C384 or equivalent receiver chipset (EPM-1530-24)
 - NS DS90C364 or equivalent receiver chipset (EPM-1530-18)
 - Supports VGA, SVGA, XGA and single/dual pixel SXVGA display type
- 20-pin HIROSE DF14A-20P-1.25H Connector (Input)
- Operating temperature: 32 to 140°F (0 to 60°C)
- Size (L x W): 2.6" x 2.0" (65 mm x 50 mm)

Diagram



Diagram



Supported Boards

- Avalue boards with 18/24-bit TTL port

Ordering Information

- **EPM-1520-18**
18-bit LVDS Transmitter Module
- **EPM-1520-24**
18/24-bit LVDS Transmitter Module

Supported Boards

- Avalue boards with 18/24-bit LVDS port

Ordering Information

- **EPM-1530-18**
18-bit LVDS Receiver Module
- **EPM-1530-24**
18/24-bit LVDS Receiver Module