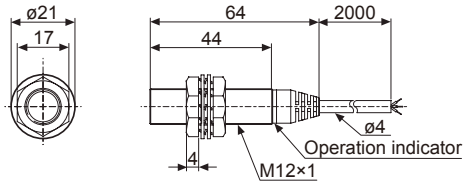


# Long Distance Type

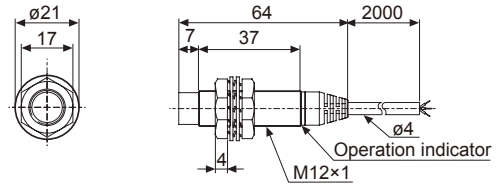
## Dimensions

(unit: mm)

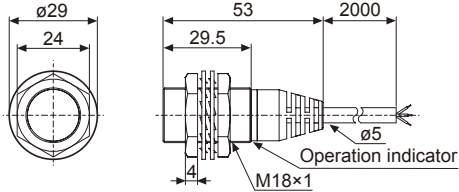
### PRDL(T)12-4D



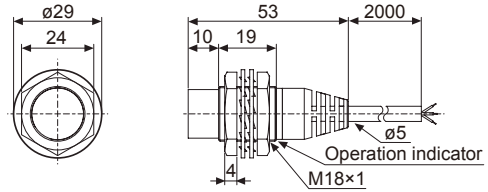
### PRDL(T)12-8D



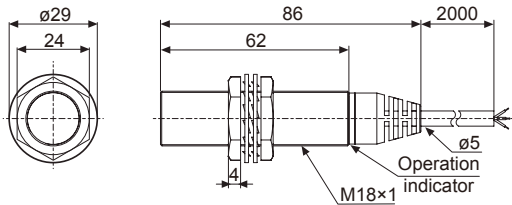
### PRD(T)18-7D



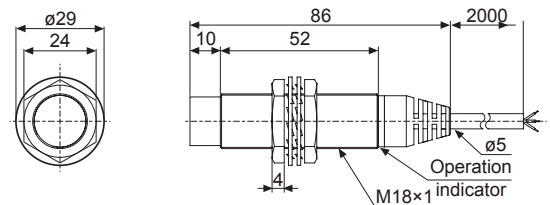
### PRD(T)18-14D



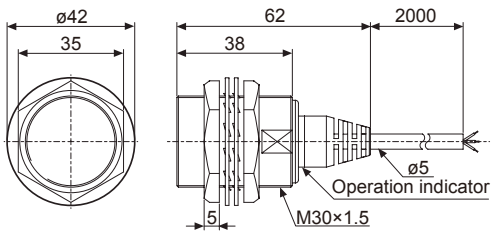
### PRDL(T)18-7D



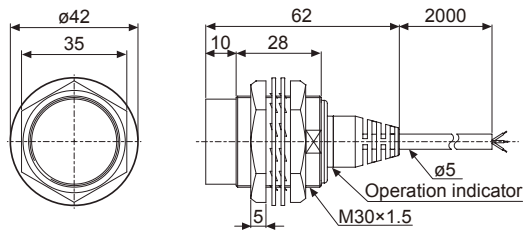
### PRDL(T)18-14D



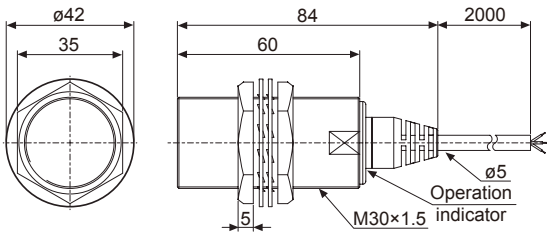
### PRD(T)30-15D



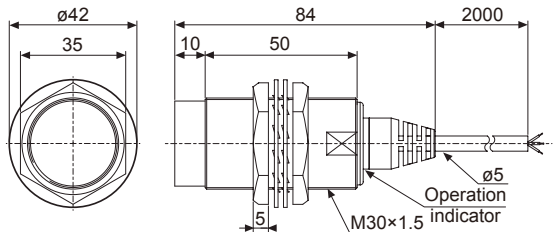
### PRD(T)30-25D



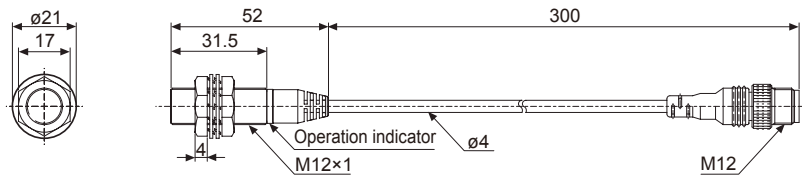
### PRDL(T)30-15D



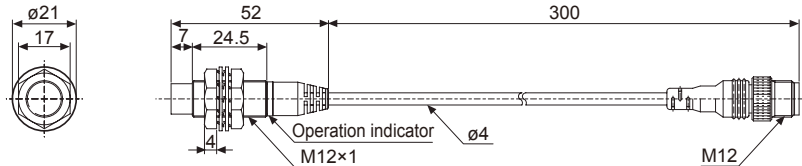
### PRDL(T)30-25D



### PRDW(T)12-4D



### PRDW(T)12-8D



(A) Photo electric sensor

(B) Fiber optic sensor

(C) Door/Area sensor

(D) Proximity sensor

(E) Pressure sensor

(F) Rotary encoder

(G) Connector/Socket

(H) Temp. controller

(I) SSR/Power controller

(J) Counter

(K) Timer

(L) Panel meter

(M) Tacho/Speed/Pulse meter

(N) Display unit

(O) Sensor controller

(P) Switching mode power supply

(Q) Stepper motor & Driver&Controller

(R) Graphic/Logic panel

(S) Field network device

(T) Software

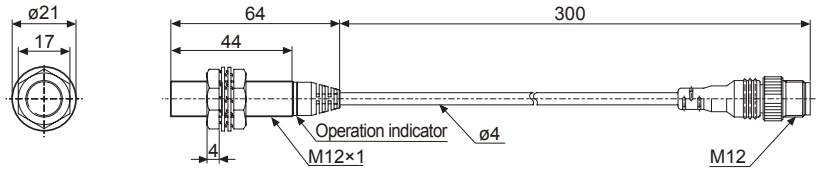
(U) Other

# PRD/PRDW Series

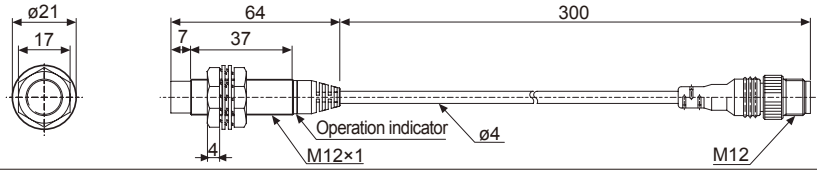
## ■ Dimensions

(unit: mm)

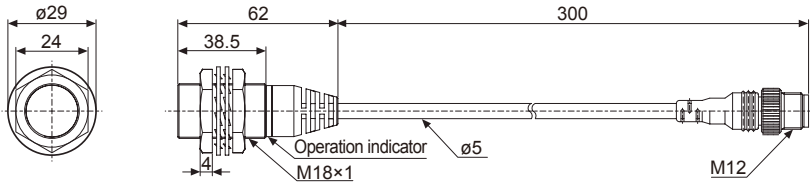
### ● PRDWL12-4D



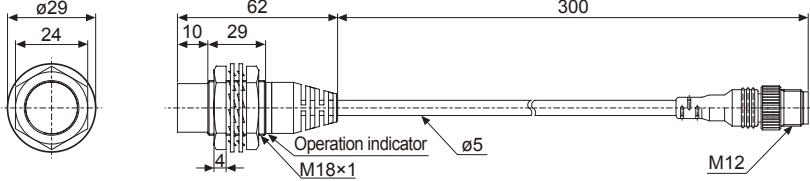
### ● PRDWL12-8D



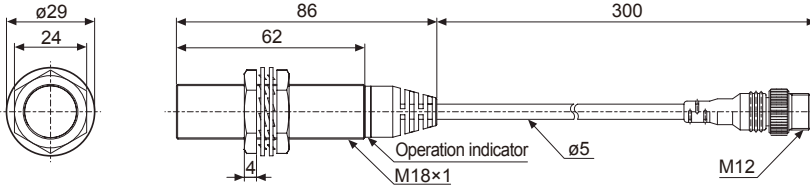
### ● PRDW(T)18-7D



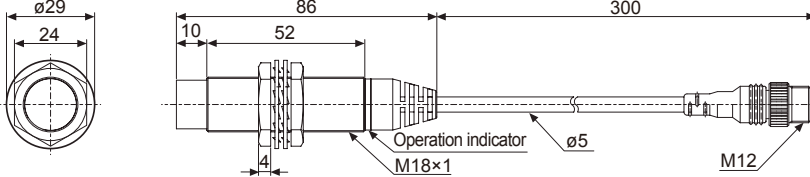
### ● PRDW(T)18-14D



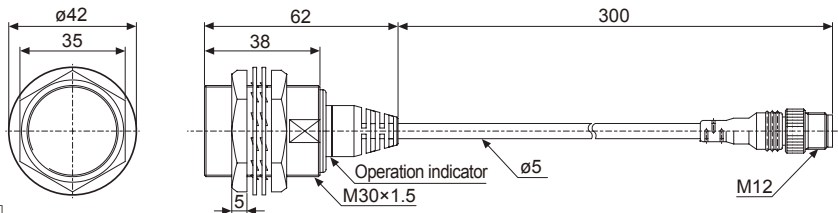
### ● PRDWL(T)18-7D



### ● PRDWL(T)18-14D



### ● PRDW(T)30-15D



### ● PRDW(T)30-25D

