



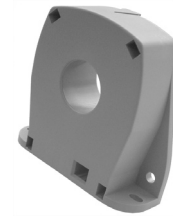
Closed Loop Current Sensors

CSNB Series

CSNC Series

CSNE Series

Sensed current range	±100 A	±90 A	±36 A, ±90 A
Sensed current type	ac, dc	ac, dc	ac, dc, impulse
Output	current	current	current
Coil turns	2000	1000 (50 Ohm coil)	1000 (110 Ohm or 66 Ohm coil)
Response time	< 1 μs	< 1 μs	< 1 μs
Accuracy	±0.5 %	±0.5 %	±0.5 %
Mounting	PCB on 3 pins	PCB on 3 pins	PCB on 13 pins
Pinout style	Offset	Offset	5-pin
Operating temperature	0 °C to 70 °C [32 °F to 158 °F]	-25 °C to 85 °C [-13 °F to 185 °F]	0 °C to 70 °C [32 °F to 158 °F]
Supply voltage	±15.0 Vdc	±13.0 Vdc	±12 Vdc to ±15 Vdc



Closed Loop Current Sensors

CSNG Series

CSNJ Series

CSNK Series

Sensed current range	±180 A, ±200 A	±600 A	±1200 A
Sensed current type	ac, dc	ac, dc, impulse	ac, dc, impulse
Output	current	current	current
Coil turns	2000	2000	5000 (50 Ohm coil)
Response time	< 0.5 μs	< 0.5 μs	< 1 μs
Accuracy	±0.5 %	±0.5 %	±0.5 %
Mounting	PCB on 3 pins	panel	panel
Pinout style	offset	spade terminals (x 3)	Molex (3-way)
Operating temperature	-40 °C to 85 °C [-40 °F to 185 °F]	-40 °C to 85 °C [-40 °F to 185 °F]	-40 °C to 85 °C [-40 °F to 185 °F]
Supply voltage	±15.0 Vdc	±12.0 Vdc to ±18.0 Vdc	±15 Vdc to ±18 Vdc

Current Sensors Line Guide



Closed Loop Current Sensors

CSNL Series

CSNM Series

CSNP Series

Sensed current range	±600 A	±1000 A	±90 A
Sensed current type	ac, dc	ac, dc	ac, dc
Output	current	current	current
Coil turns	2000	3000	1000
Response time	< 0.5 μs	< 1 μs	< 0.5 μs
Accuracy	±0.5 %	±0.5 %	±0.5 %
Mounting	panel	panel	PCB on 3 pins
Pinout style	Molex (3-way)	Molex (3-way)	offset
Operating temperature	-40 °C to 85 °C [-40 °F to 185 °F]	-40 °C to 85 °C [-40 °F to 185 °F]	-40 °C to 85 °C [-40 °F to 185 °F]
Supply voltage	±12.0 Vdc to ±18.0 Vdc	±12.0 Vdc to ±18.0 Vdc	±12.0 Vdc to ±15.0 Vdc



Closed Loop Current Sensors

CSNS Series

CSNR Series

CSNT Series

Sensed current range	±320 A, ±600 A	±200 A	±150 A
Sensed current type	ac, dc, impulse	ac, dc	ac, dc
Output	current	current	current
Coil turns	2000	1000, 2000	2000
Response time	< 0.5 μs	< 0.5 μs	< 0.5 μs
Accuracy	±0.5 %	±0.5 %	±0.5 %
Mounting	panel	PCB on 3 pins	PCB on 3 pins
Pinout style	Molex (3-way)	center, offset	offset
Operating temperature	-40 °C to 85 °C [-40 °F to 185 °F]	-40 °C to 85 °C [-40 °F to 185 °F]	-40 °C to 85 °C [-40 °F to 185 °F]
Supply voltage	±12 Vdc to ±18 Vdc	±12.0 Vdc to ±15.0 Vdc	±12.0 Vdc to ±15.0 Vdc