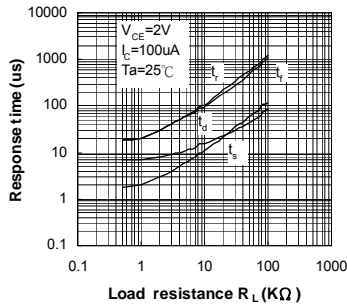


Fig. 5 Response Time vs. Load Resistance



Test Circuit for Response Time

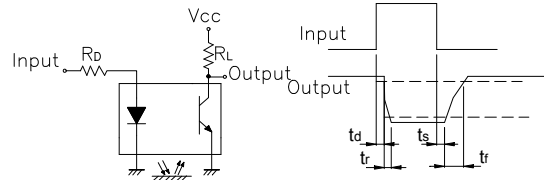


Fig. 6 Collector Dark Current vs. Ambient Temperature

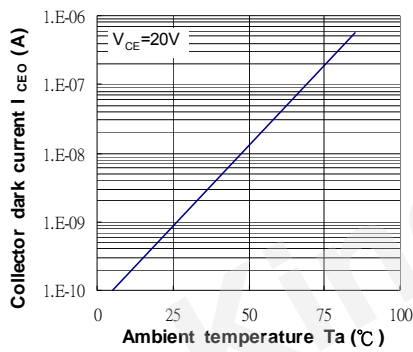


Fig. 7 Relative Collector Current vs. Distance between Sensor and Al Evaporation Glass

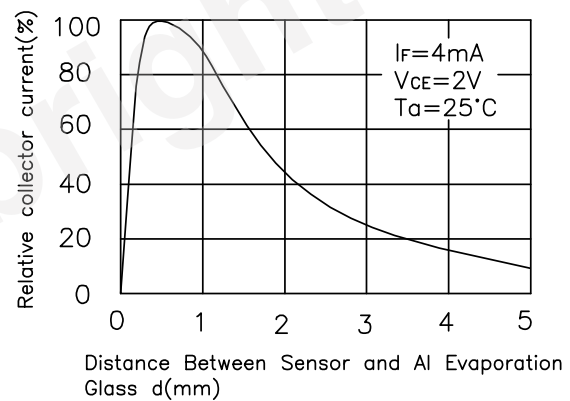


Fig. 8 Relative Collector Current vs. Card Moving Distance (1)

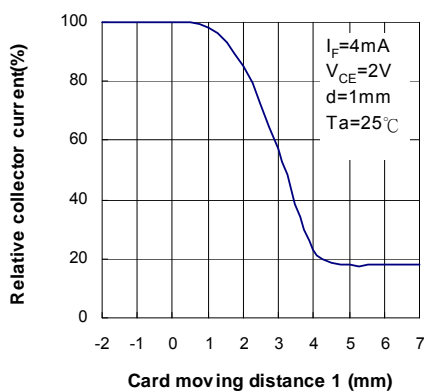
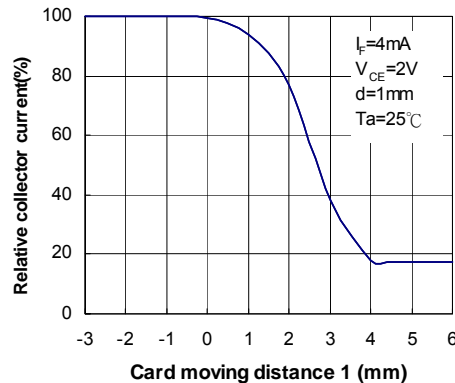
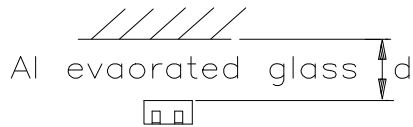


Fig. 9 Relative Collector Current vs. Card Moving Distance (2)



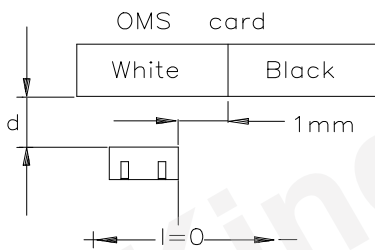
## Test Condition for Distance & Detecting Position Characteristics

Correspond to Fig. 7



Correspond to Fig. 8  
Test condition

$I_F = 4\text{mA}$   
 $V_{CE} = 2\text{V}$   
 $d = 1\text{mm}$



Correspond to Fig. 9  
Test condition

$I_F = 4\text{mA}$   
 $V_{CE} = 2\text{V}$   
 $d = 1\text{mm}$

