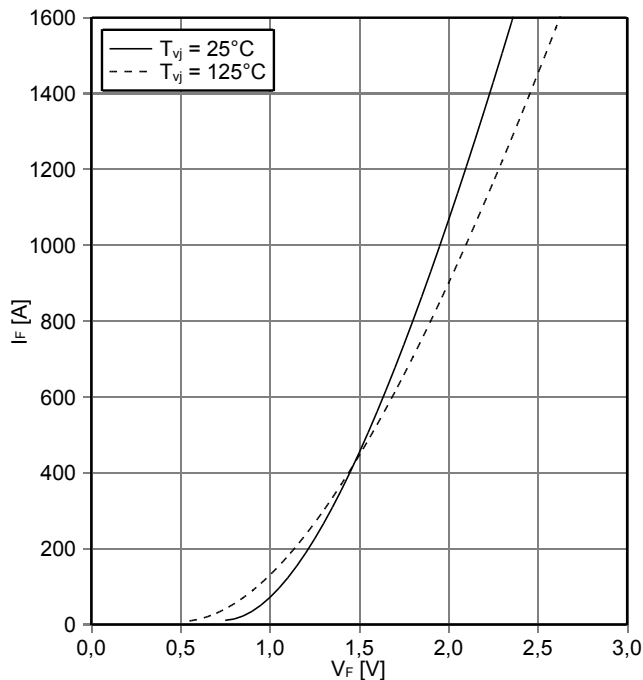
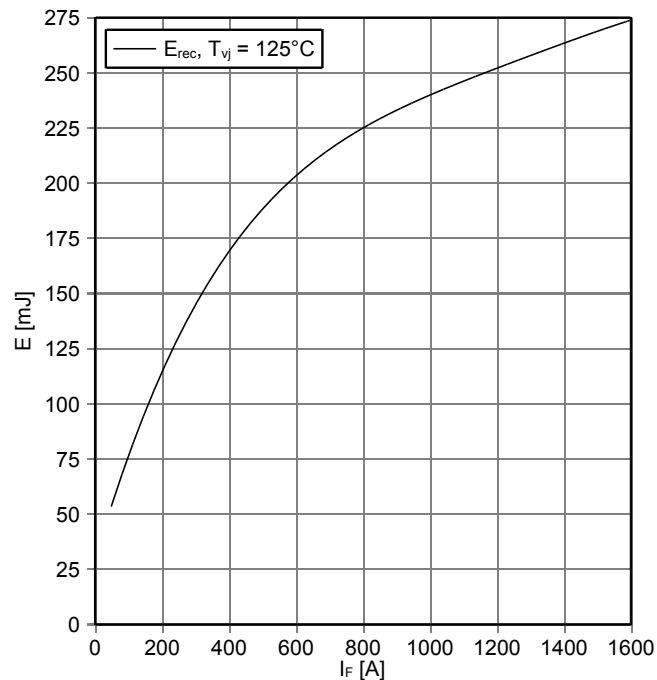


初步数据
Preliminary Data

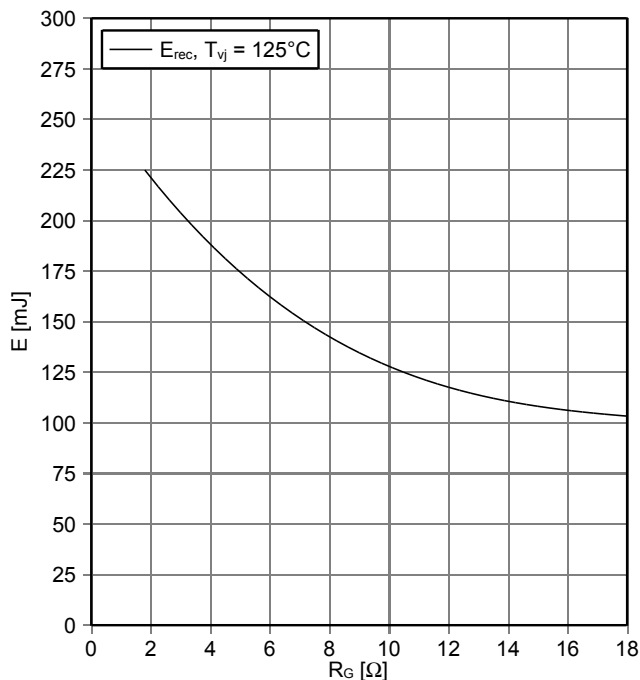
正向偏压特性 二极管,逆变器 (典型)
forward characteristic of Diode, Inverter (typical)
 $I_F = f(V_F)$



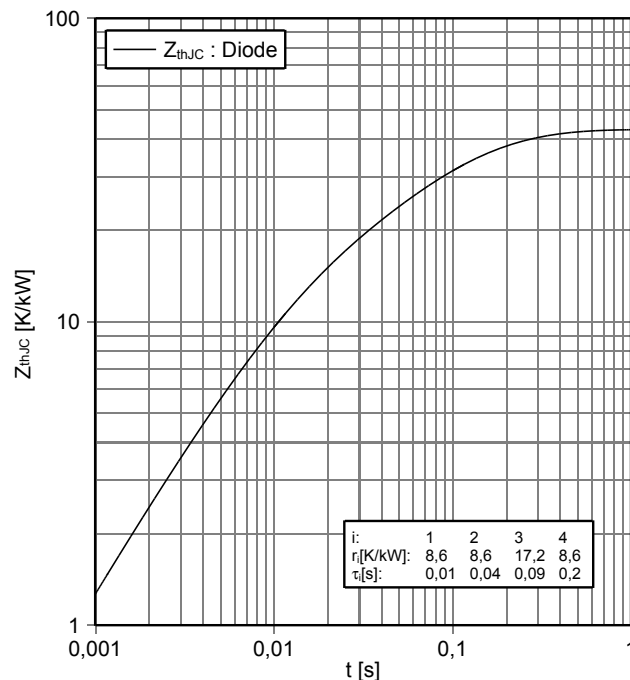
开关损耗 二极管,逆变器 (典型)
switching losses Diode, Inverter (typical)
 $E_{rec} = f(I_F)$
 $R_{Gon} = \Omega, V_{CE} = 900 V$



开关损耗 二极管,逆变器 (典型)
switching losses Diode, Inverter (typical)
 $E_{rec} = f(R_G)$
 $I_F = 800 A, V_{CE} = 900 V$

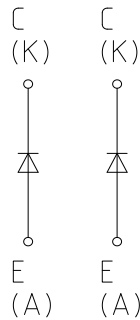


瞬态热阻抗 二极管,逆变器
transient thermal impedance Diode, Inverter
 $Z_{thJC} = f(t)$

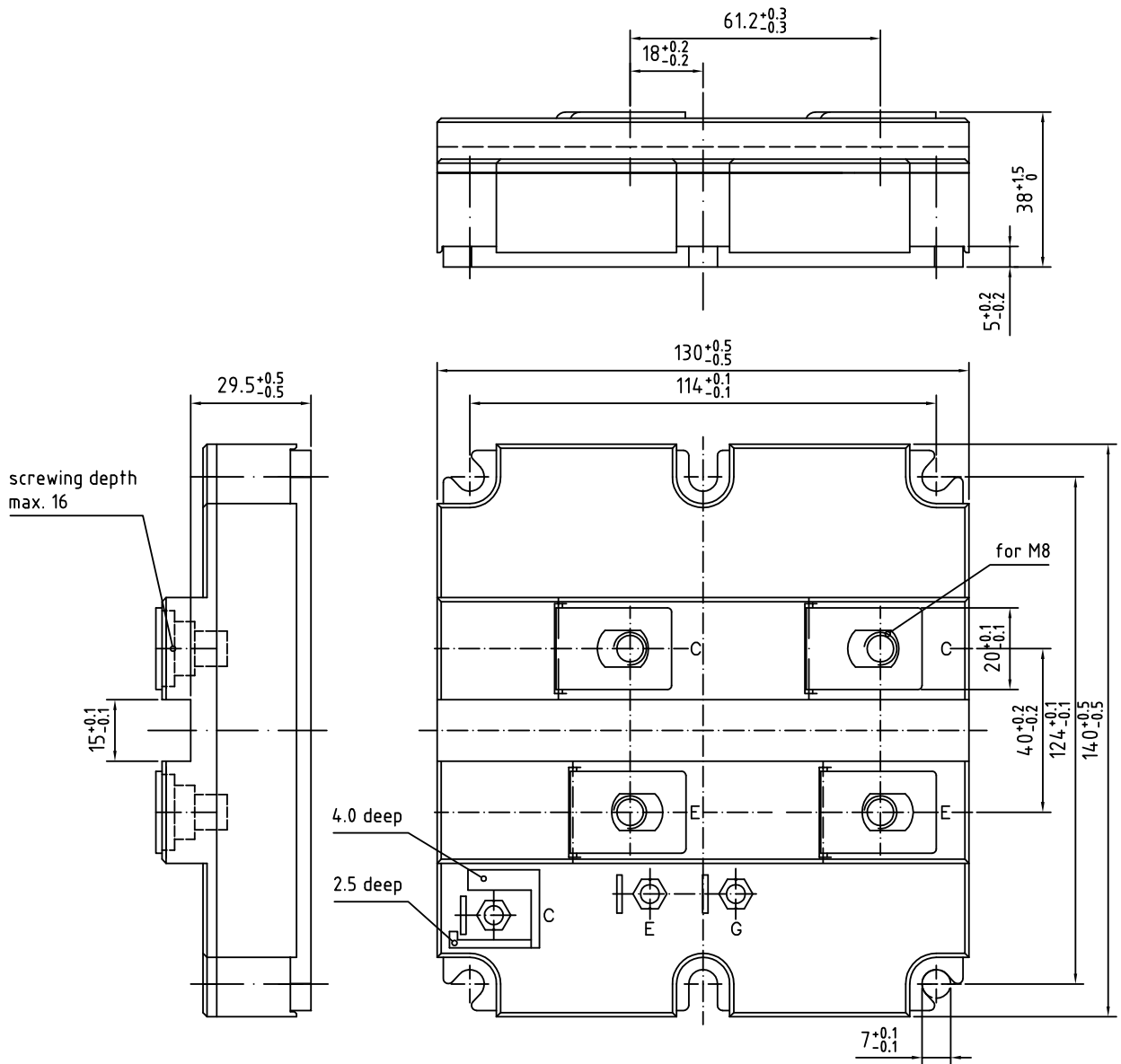


prepared by: WB	date of publication: 2013-04-30
approved by: PL	revision: 2.2

接线图 / circuit_diagram_headline



封装尺寸 / package outlines



prepared by: WB	date of publication: 2013-04-30
approved by: PL	revision: 2.2