

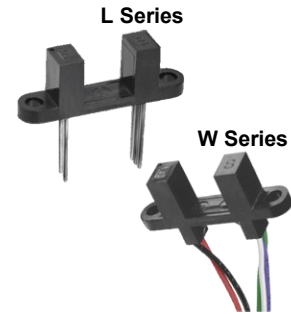
# Photologic® Slotted Optical Switch “Wide Gap” Series



## OPB900 through OPB913 Series (L, W\_Z)

### Features:

- 0.375" (9.5 mm) wide gap
- Choice of logical output configurations
- Choice of opaque or IR transmissive housing material
- Choice of PCBoard or 26 AWG, UL rated wire
- Data rates to 250 kBaud



### Description:

The **OPB900 - OPB913** series of Photologic® Integrated Circuit Switches provide optimum flexibility for the design engineer. Building from a standard housing with a 0.375" (9.5mm) wide slot, a user can specify the type and polarity of the TTL output and the type of shell material.

Electrical output can be specified as either TTL Totem Pole (buffered) or TTL Open Collector, either of which can be supplied with an inverted output polarity.

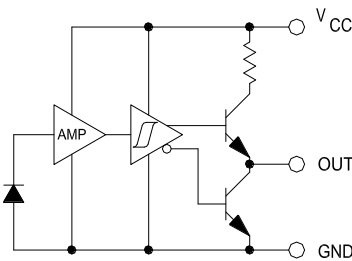
All versions have the added stability of hysteresis built into the amplification circuitry.

### Applications:

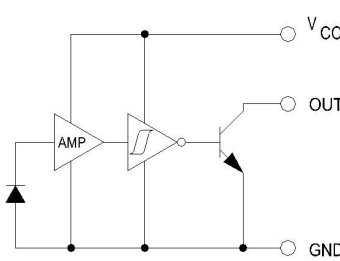
- Mechanical switch replacement
- Speed indication (tachometer)
- Mechanical limit indication
- Edge sensing
- Object sensing

Part Number Guide — OPB900 Series (L, W)	
<b>OPB9</b>	---
0 = Dust protection with apertures 1 = Open apertured	L55 = Solder lead termination (PCBoard mount) OR W5_Z = 26 AWG wire termination (24" [61cm] long)
0 = Totem Pole 1 = Open Collector 2 = Inverted Totem Pole 3 = Inverted Open Collector	Aperture sizes: 1 = 0.010" (0.25 mm) 5 = 0.050" (1.27 mm)

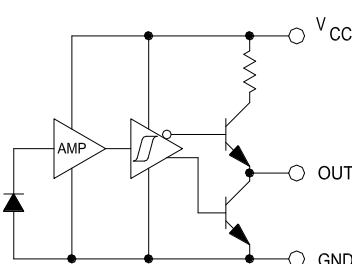
### Totem-Pole-Output



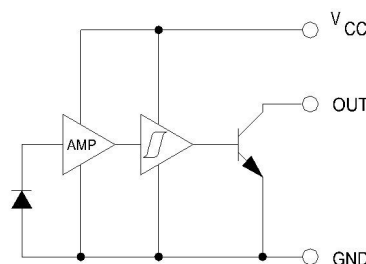
### Open-Collector-Output



### Inverted Totem-Pole



### Inverted Open Collector



RoHS

### General Note

TT Electronics reserves the right to make changes in product specification without notice or liability. All information is subject to TT Electronics' own data and is considered accurate at time of going to print.

TT Electronics | OPTEK Technology  
1645 Wallace Drive, Carrollton, TX 75006 | Ph: +1 972 323 2200  
www.ttelectronics.com | sensors@ttelectronics.com

