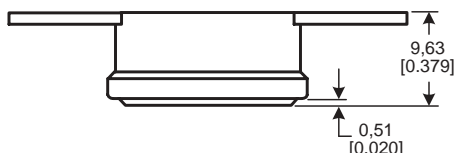


## 2450A/2455A Series Heat Detection Thermostats

The gold contacts open or close on a temperature rise of 47 °C to 107 °C [117 °F to 225 °F].

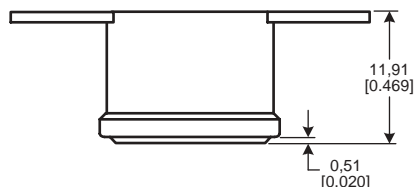
**Reset type:** Automatic  
**Amperage capacity:** 15 A resistive max.  
**Housing material:** Phenolic, epoxy-sealed cap and terminal  
**Operating temperature range:** 47 °C to 107 °C [117 °F to 225 °F]  
**Environmental exposure range:** 0 °C to 150 °C [32 °F to 302 °F]

### 2450A



**SERIES NAME**  
2450A Heat Detection Thermostat

### 2455A



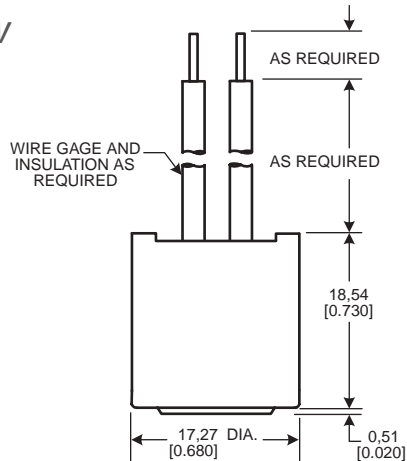
**SERIES NAME**  
2455A Heat Detection Thermostat

## 2455RBV Series Overmolded Automatic Reset Thermostats

A temperature-sensitive bimetal disc, electrically isolated from the switch, actuates the normally closed contacts. The contacts open when the surface or ambient temperatures increase to the operating snap point of the calibrated disc. Response to temperature changes is extremely rapid due to the inherently low mass of the disc and the small size of the product.

**Reset type:** Automatic  
**Amperage capacity:** 15 A resistive max.  
**Housing material:** Ceramic or phenolic, epoxy overmold  
**Operating temperature range:** -12 °C to 105 °C [10 °F to 221 °F]  
**Environmental exposure range:** -18 °C to 121 °C [0 °F to 250 °F]

### 2455RBV



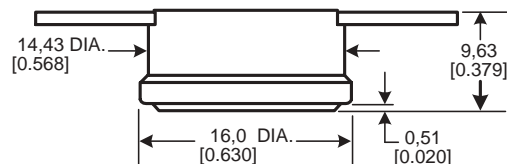
**SERIES NAME**  
2455RBV Overmolded Automatic Reset Thermostat

## 2450R/2450RCH/2455R/2455RC Series "One-shot" ½ in Thermostats

Products are designed for high limit applications where automatic reset is not desired.

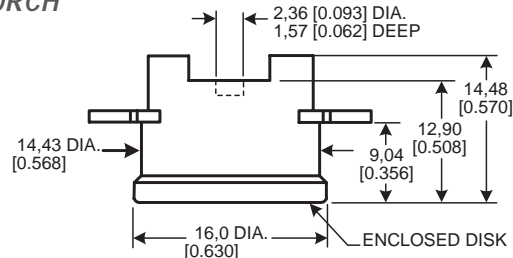
**Reset type:** None  
**Amperage capacity:** 15 A resistive max.  
**Housing material:** ceramic or phenolic  
**Operating temperature range:** 52 °C to 260 °C [125 °F to 500 °F] (ceramic)  
 52 °C to 150 °C [125 °F to 302 °F] (phenolic)  
**Environmental exposure range:** 18 °C to 316 °C [0 °F to 600 °F] (ceramic)  
 18 °C to 177 °C [0 °F to 350 °F] (phenolic)

### 2450R



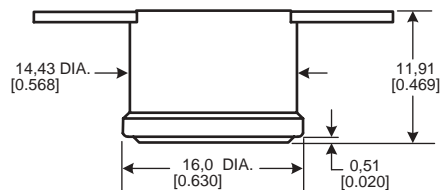
**SERIES NAME**  
2450R Phenolic "One-shot" ½ in Thermostat

### 2450RCH



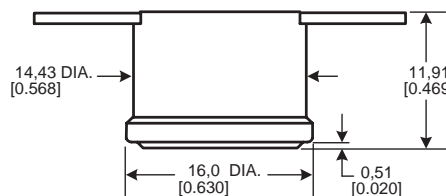
**SERIES NAME**  
2450RCH Ceramic "One-shot" ½ in Thermostat

### 2455R



**SERIES NAME**  
2455R Phenolic "One-shot" ½ in Thermostat

### 2455RC

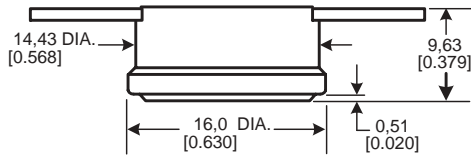


**SERIES NAME**  
2455RC Ceramic "One-shot" ½ in Thermostat

## 2450R Series Annular Ring Cap Automatic Reset Thermostats

A temperature-sensitive bimetal disc, electrically isolated from the switch, actuates the normally closed contacts. The contacts open when the surface or ambient temperatures increase to the operating snap point of the calibrated disc. Response to temperature changes is extremely rapid due to the inherently low mass of the disc and the small size of the product.

|                                      |  |
|--------------------------------------|--|
| <b>Reset type:</b>                   | Automatic  |
| <b>Amperage capacity:</b>            | 15 A resistive, 12 Vdc   |
| <b>Housing material:</b>             | Phenolic, can be partially or totally sealed against water ingress |
| <b>Operating temperature range:</b>  | -10 °C to 55 °C [14 °F to 131 °F]                                  |
| <b>Environmental exposure range:</b> | -40 °C to 130 °C [-40 °F to 266 °F]                                |
| <b>Life Cycle Capability:</b>        | 300 K at 12 Vdc, 10 A  |
| <b>Low Temperature Differential:</b> | Down to 8 °C [46 °F]   |
| <b>Switch Temperature Tolerance:</b> | ±3 °C  |

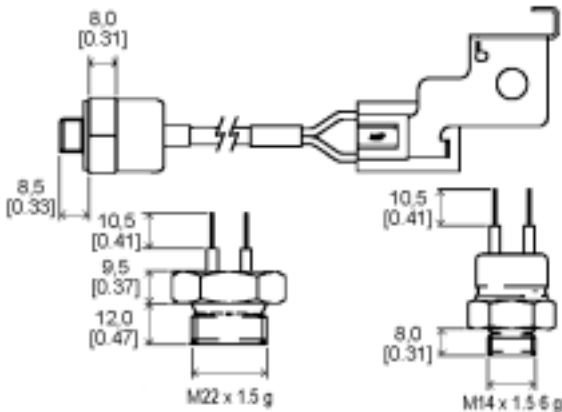


**SERIES NAME**  
2450R Phenolic Annular Ring Cap Automatic Reset Thermostat

## 2450R/2455R Series Protected Thermostats

A temperature-sensitive bimetal disc, electrically isolated from the switch, actuates the normally closed contacts. The contacts open when the surface or ambient temperatures increase to the operating snap point of the calibrated disc. Basic thermostat is protected from the environment by sealing it in a metal housing or encapsulating it in epoxy.

|                                      |   |
|--------------------------------------|---|
| <b>Reset type:</b>                   | Automatic                                   |
| <b>Amperage capacity:</b>            | 15 A resistive, 12 Vdc                      |
| <b>Housing material:</b>             | Brass, aluminium, stainless steel and epoxy |
| <b>Operating temperature range:</b>  | 15 °C to 130 °C [59 °F to 266 °F]           |
| <b>Environmental exposure range:</b> | -40 °C to 155 °C [-40 °F to 311 °F]         |

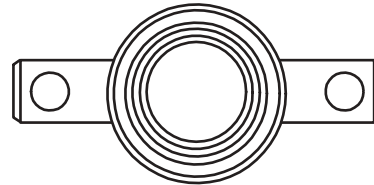
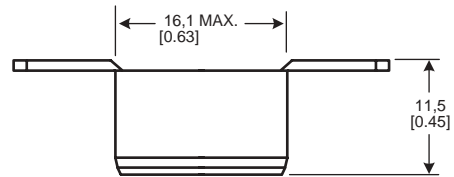


**SERIES NAME**  
2450R Protected Thermostat  
2455R Protected Thermostat

## 2450R Series Fully Sealed Thermostats

A temperature-sensitive bimetal disc, electrically isolated from the switch, actuates the normally closed contacts. The contacts open when the surface or ambient temperatures increase to the operating snap point of the calibrated disc. Response to temperature changes is extremely rapid due to the inherently low mass of the disc and the small size of the product.

|                                      |   |
|--------------------------------------|---|
| <b>Reset type:</b>                   | Automatic   |
| <b>Amperage capacity:</b>            | 15 A resistive, 12 Vdc  |
| <b>Housing material:</b>             | Phenolic housing, aluminium cap totally encapsulated in water resistant epoxy |
| <b>Operating temperature range:</b>  | -10 °C to 55 °C [14 °F to 131 °F]   |
| <b>Environmental exposure range:</b> | -40 °C to 130 °C [-40 °F to 266 °F]   |
| <b>Life cycle capability:</b>        | 300 K at 12 Vdc, 10 A   |
| <b>Low temperature differential:</b> | Down to 8 °C [46 °F]  |
| <b>Switch temperature tolerance:</b> | ±3 °C   |



**SERIES NAME**  
2450R Fully Sealed Thermostat