

**Large 200 mm
(8") 2-Sided
Chart**

**PATENTS
PENDING**

**MODEL #2
CTXL-TRH-W**



- ✓ Record Temperature/Humidity with Remote Wireless Probe
- ✓ RF Range 90 m (300') Line of Sight and 33 m (108') Indoors
- ✓ 1, 7 or 32 Day Recording
- ✓ Easy to Read Dual Channel Backlit LCD Readout
- ✓ Convenient Front Panel Programming/Operation
- ✓ Monitor Min/Max/Avg Values
- ✓ High/Low Audible/Visual Alarms
- ✓ Dual High Alarm Relays, Dual Low Alarm Voltage Outputs
- ✓ Double Sided Charts with Magnetic Mount Hub
- ✓ Benchtop or Wall Mount with Built-In Chart Lights
- ✓ Powered by 4 "D" Batteries or Universal AC Adaptor
- ✓ RoHS 2 Compliant

Choice of White or Gray to Meet Your Needs!

Wireless Transmitter—Up to 90 m (300') from Recorder



Remote wireless temperature/humidity transmitter, included, shown smaller than actual size.

CTXL-TRH-W-W9 temperature/humidity recorder with remote wireless transmitter, shown smaller than actual size.

Specifications

(See Common Specifications on Page S-44)

Transmitter

Transmit Sample Rate:
2 sec up to 2 min

Radio Frequency: ISM 915 MHz or ISM 868 MHz

Approvals:

- CTXL-TRH-(*)-W9: FCC, Class A
- CTXL-TRH-(*)-W8: CE

RF Link Range:

Outdoor Line of Sight: Up to 90 m (300')
Indoor/Urban: Up to 33.5 m (110')

Computer Interface:

USB, to change transmit interval, frequency and channel ID

Operating Ambient: -18 to 49°C (0 to 120°F), 2 to 98% RH

LED Indicators: Red LED for Low Battery and other communication error indications; Green LED for transmit indication

Power: One 3.6 Vdc "AA" Lithium Battery, 2400 mAH capacity, or optional ac adaptor, UNI-AC-100/240-5V

Battery Life: 1 year typical, at 1 minute transmission rate

Receiver

Computer Interface:

USB, to change receive interval, frequency and channel ID

Operating Ambient: -18 to 49°C (0 to 120°F), 2 to 98% RH

LED indicators: Red LED for comm. error indications, Green LED for receive indication

Power: From the CTXL recorder through the round DIN connector

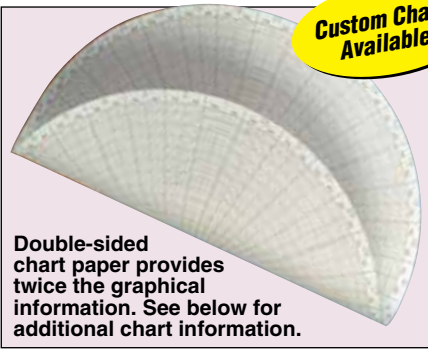
† Refer to accessories chart for NIST calibration ordering information.

Application Software Available Online!

- Monitors Temperature and Humidity
- Line Graph and Store of Readings in Real Time and Download of Recorded Data
- Set the Line Graph Scales to Auto, Logarithmic, or Manual
- Re-Scale the Recorder Chart Paper
- Print Line Graphs to a Printer



Custom Charts Available!



Double-sided chart paper provides twice the graphical information. See below for additional chart information.

To Order

Model No.	Description	Color	Wireless
CTXL-TRH-W	Temperature/RH recorder	White	—
CTXL-TRH-G	Temperature/RH recorder	Gray	—
CTXL-TRH-W-(*)	Temperature/RH recorder	White	Y
CTXL-TRH-G-(*)	Temperature/RH recorder	Gray	Y

* Specify wireless type: "W9" for USA/Canada (915 MHz) or "W8" for Europe (868 MHz)

Double-Sided Charts†

Model No.	Description
CT485-CDF	100 charts, 1 day (am/pm), °F
CT485-CDC	100 charts, 1 day (am/pm), °C
CT485-C24F	100 charts, 1 day (24 hr), °F
CT485-C24C	100 charts, 1 day (24 hr), °C
CT485-CWF	100 charts, 7 day, °F
CT485-CWC	100 charts, 7 day, °C
CT485-CMF	100 charts, 32 day, °F
CT485-CMC	100 charts, 32 day, °C
CT485-CSP	120 charts, 20 each, 1 day (am/pm), 7 day, 32 day, °F and °C (one included with unit)

†† To order a package of 600 double sided charts, add suffix "-6" to model number for additional cost.

CTXL-TRH Units Include 120 Double-Sided Charts FREE!

(20 each of 1-day, °F; 1-day, °C; 7-day, °F; 7-day, °C; 32-day, °F; 32-day °C).

Additional charts can be ordered as 1 pack of 100 or 6 packs of 100 (see "Charts" table below left).

Double-Sided Specialty Charts (pkg of 20)

To Order

Model No.	Description	Optimal Band Range
CT485-MW(*)	Museum/art gallery, 7 day	18.3 to 22.2°C (65 to 72°F), 40 to 50% RH
CT485-MM(*)	Museum/art gallery, 32 day	18.3 to 22.2°C (65 to 72°F), 40 to 50% RH
CT485-HW(*)	Hospital, 7 day	20 to 23.3°C (68 to 74°F), 40 to 50% RH
CT485-HM(*)	Hospital, 32 day	20 to 23.3°C (68 to 74°F), 40 to 50% RH
CT485-LW(*)	Lab/clean room, 7 day	20 to 23.9°C (68 to 75°F), 40 to 55% RH
CT485-LM(*)	Lab/clean room, 32 day	20 to 23.9°C (68 to 75°F), 40 to 55% RH
CT485-PW(*)	Computer room/office, 7 day	18.3 to 23.9°C (65 to 75°F), 45 to 60% RH
CT485-PM(*)	Computer room/office, 32 day	18.3 to 23.9°C (65 to 75°F), 45 to 60% RH

* Specify temperature units, "C" for °C or "F" for °F.

Accessories

Model No.	Description
CTXL-PT-(*)	Wireless Temperature/Humidity probe transmitter, to retrofit a CTXL-TRH unit
CTXL-PR-(*)	Wireless Temperature/Humidity receiver, to retrofit a CTXL-TRH unit
UNIV-AC-100/240-5V	Universal (110/240 Vac, 50/60 Hz) 5 Vdc adaptor, to power CTXL-PT externally
UNIV-AC-100/240	Universal (110/240 Vac, 50/60 Hz) 9 Vdc adaptor
CTXL-CABLE-6	1.8 m (6') sensor extension cable (replacement)
CTXL-CABLE-10	3 m (10') sensor extension cable
CTXL-CABLE-25	7.6 m (25') sensor extension cable
CTXL-CABLE-6-S	3 m (10') sensor extension cable
CT485B-CAL-KIT	RH calibration kit, 33 and 75% RH salt solutions
CAL-3-CTXL†	NIST-traceable calibration
CT485B-MAG	Chart magnetic hub
CT485-PS	Pen set, one each red and blue pens
CT485-PS-6	Six pen sets, six each red and blue pens
CTXL-RP-W-CAL-3	Temperature/humidity sensor probe (white) with CAL-3 certificate
CTXL-RP-G-CAL-3	Temperature/humidity sensor probe (gray) with CAL-3 certificate
CTXL-RP-W	Temperature/Humidity sensor probe (white)
CTXL-RP-G	Temperature/Humidity sensor probe (gray)
CT485B-CLIP-KIT	Sensor clip kit
OM-NOMAD-BATT	3.6V "AA" lithium replacement battery for CTXL-PT wireless transmitter

* Specify wireless type: "W9" for USA/Canada (915 MHz) or "W8" for Europe (868 MHz). To retrofit a CTXL-TRH recorder with wireless capability, one transmitter (CTXL-PT) and one receiver (CTXL-PR) are required.

Each unit comes complete with sensor probe and clip, 120 assorted double-sided charts, 2 pen sets, 1.8 m (6') remote sensor cable, wall mount kit, 4 "D" cell batteries, RS232 cable and adaptor, universal (110/240 Vac, 50/60 Hz) 9 Vdc adaptor, and quick start manual.

Ordering Example: CTXL-TRH-W-W9, white temperature/relative humidity recorder with remote/wireless probe, CT485-CWF, chart paper (100 double sided sheets, 7 day, °F), and OCW-3, OMEGACARESM extends standard 2-year warranty to a total of 5 years.