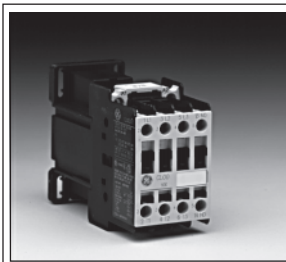


Three-pole contactors from 9 to 105A (AC3)

- Control circuit :
Direct current up to 440V
- Terminal numbering in accordance with EN 50005 and EN 50012
- Fixing by clipping onto 35 mm DIN rail EN 50022-35 or by screws
- Degree of protection CL00... to CL02... : IP20
CL25... to CL10... : IP10
- Screws protected against accidental contact in accordance with VDE 0106.
- Three coil terminals.
- The types CL...E are also suitable for AC control.
- Accessories:
Mounting possibilities of front/side instantaneous auxiliary contact blocks, timed auxiliary contact blocks, mechanical latch, transient suppressor block and interface modules
- Maximum number of auxiliary contacts:
four for CL00...CL25
six for CL03...CL45
eight for CL06...CL10


CL00D310TD

Control circuit: direct current

Max. operat. current		Admissible power AC3				Elec. endur.	Aux. contacts	Cat. no. ⁽¹⁾	Weight
Non-inductive load	Motors ≤ 440V 3-phase 50/60 Hz AC3	220V	380V	415V	500V	Category AC3			
		230V	400V	440V					
AC1	A	kW	kW	kW	kW	operations			
25	9	2.2	4	4	5.5	2 x 10 ⁶	1 0	CL00D310T ◆	0.490
							0 1		
25	12	3	5.5	5.5	7.5	2 x 10 ⁶	1 0	CL01D310T ◆	0.490
							0 1		
32	18	4	7.5	7.5	10	1.7 x 10 ⁶	1 0	CL02D310T ◆	0.490
							0 1		
45	25	7.5	11	11	15	2 x 10 ⁶	0 0	CL25D300T ◆	0.480
45	25	7.5	12	12	15	2 x 10 ⁶	1 0	CL03D310M ◆	0.480
							0 1		
60	32	9	16	16	18.5	2 x 10 ⁶	1 0	CL04D310M ◆	0.835
							0 1		
60	40	11	18.5	22	25	2 x 10 ⁶	0 0	CL45D300M ◆	0.825
90	50	15	22	25	30	1.8 x 10 ⁶	0 0	CL06E300M ◆	1.095
110	65	18.5	30	37	40	1.7 x 10 ⁶	0 0	CL07E300M ◆	1.110
110	80	22	37	45	45	1.5 x 10 ⁶	0 0	CL08E300M ◆	1.120
140	95	25	45	50	55	1.7 x 10 ⁶	0 0	CL09E300M ◆	1.440
140	105	30	55	55	65	1.5 x 10 ⁶	0 0	CL10E300M ◆	1.460
Spare coils							(pure DC coil) CL00 - CL25	LB1D ◆	0.205
							(pure DC coil) CL03 - CL45	LB3D ◆	0.276
							(coil + electronic module) CL06 - CL10	LB4E ◆	0.610

Available coil voltages ⁽¹⁾

Direct current (V). For contactors type CL...D / Operating limits: 0.80 ... 1.10 x Us

◆	B	D	E	F	G	H	I	J	K	N	P	R	X
Voltage	12	24		42	48			110	120	220		240	
									125				

Direct current (V). Coil with electronic module for contactors CL...E ⁽²⁾ / Operating limits: 0.80 ... 1.10 x Us

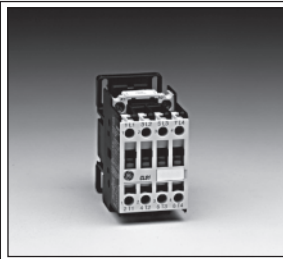
◆	D	F	H	J	N	Y
Voltage	24	42		110	220	
	28	48		125	250	

- (1) To complete the catalogue number, replace the symbol ◆ by the code corresponding to the voltage and frequency of the control circuit.
 (2) Can also be used with alternating current.



Four-pole contactors (4NO) from 25 to 140A (AC1)

- Power circuit (AC): up to 690V
- Control circuit: Alternating current up to 690V AC Direct current up to 440V DC
- Terminal numbering in accordance with EN 50005 and EN 50012
- Fixing by clipping onto 35 mm DIN rail (EN 50022-35) or by screws.
- Degree of protection CL01... to CL02... : IP20 CL03... to CL09... : IP10
- Screws protected against accidental contact in accordance with VDE 0106.
- Three coil terminals.
- The types CL...E are also suitable for AC control.
- Accessories: Mounting possibilities of front/side instantaneous auxiliary contact blocks, timed auxiliary contact blocks, mechanical latch, transient suppressor block and interface modules.



CL01A400TN



CL05A400MN



CL09E400MJ

Thermal overload relay, see 2.21
 Technical specifications, see 2.34
 Dimensions, see 2.44

Control circuit: alternating current

Maximum operating current		Admissible power AC1				Electrical endurance	Control circuit	Power contacts	Cat. no. ⁽¹⁾	Weight
Non-inductive load AC1	AC3	220V	380V	415V	500V	Category AC1				
		230V	400V	440V						
A	A	kW	kW	kW	kW	operations				
25	12	9.5	16.5	18	21.5	1.5 x 10 ⁶	AC	4 0	CL01A400T ♦	0.280
32	18	12	22	23	27.5	1.5 x 10 ⁶	AC	4 0	CL02A400T ♦	0.280
45	25	17	29	32	39	2 x 10 ⁶	AC	4 0	CL03A400M ♦	0.490
60	32	22.5	39.5	43	52	1.5 x 10 ⁶	AC	4 0	CL04A400M ♦	0.500
90	50	34	59	64	78	1.5 x 10 ⁶	AC	4 0	CL05A400M ♦	1.240
110	65	42	72.5	79	95	1.8 x 10 ⁶	AC	4 0	CL07A400M ♦	1.270
140	95	53	92	100	121	1.8 x 10 ⁶	AC	4 0	CL09A400M ♦	1.450
Spare coils								CL01 - CL02	LB1A ♦	0.063
								CL03 - CL04	LB3A ♦	0.102
								CL05 - CL09	LB4A ♦	0.145

Control circuit: direct current

25	12	9.5	16.5	18	21.5	1.5 x 10 ⁶	DC	4 0	CL01D400T ♦	0.490
32	18	12	22	23	27.5	1.5 x 10 ⁶	DC	4 0	CL02D400T ♦	0.490
45	25	17	29	32	39	2 x 10 ⁶	DC	4 0	CL03D400M ♦	0.825
60	32	22.5	39.5	43	52	1.5 x 10 ⁶	DC	4 0	CL04D400M ♦	0.835
90	50	34	59	64	78	1.5 x 10 ⁶	AC/DC	4 0	CL05E400M ♦	1.290
110	65	42	72.5	79	95	1.8 x 10 ⁶	AC/DC	4 0	CL07E400M ♦	1.290
140	95	53	92	100	121	1.8 x 10 ⁶	AC/DC	4 0	CL09E400M ♦	1.500
Spare coils								(pure DC coil) CL00 - CL02	LB1D ♦	0.205
								(pure DC coil) CL03 - CL04	LB3D ♦	0.276
								(coil + electronic module) CL05 - CL09	LB4E ♦	0.610

Available coil voltages ⁽¹⁾

Alternating current (V)

♦	C	D	F	G	H	J	K	M	N	R	S	T	U	V	W	X	Y	Z
50Hz		24	42	48		110	127		220	240			380	400	415	440	500	660
									230									690

Direct current (V). For contactors type CL...D / 0.80 ... 1.10 x Us ⁽⁴⁾

♦	B	D	E	F	G	H	I	J	K	N	P	R	X
Voltage	12	24		42	48			110	120	220		240	
									125				

Direct current (V). Coil with electronic module for contactors type CL...E ⁽³⁾ / 0.80 ... 1.10 x Us ⁽⁴⁾

♦	D	F	H	J	N	Y
Voltage	24	42		110	220	
	28	48		125	250	

- (1) To complete the catalogue number, replace the symbol ♦ by the code corresponding to the voltage and frequency of the control circuit.
 (2) Only for CL00 to CL45.