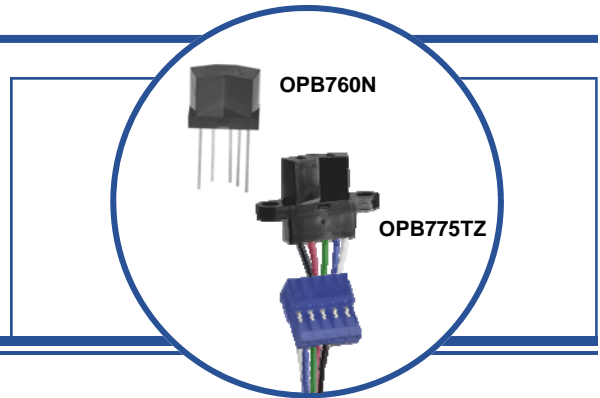


**Photologic® Reflective Object Sensor**  
**OPB760, OPB761, OPB762, OPB763 (Series N and T)**  
**OPB770, OPB771, OPB772, OPB773 (Series NZ and TZ)**



**Features:**

- Choice of mounting configurations
- Choice of four output configurations
- .040" (10.160 mm) PCBoard mount (N and T series)
- 12" (304.800 mm) AWG 26 wires (NZ and TZ series)



**Description:**

The **OPB760N, OPB760T, OPB770N** and **OPB770T** series of reflective assemblies feature Photologic® output. The electrical output can be specified as either TTL Totem-Pole or TTL Open-Collector, either of which can be supplied with inverter or buffer output polarity.

**OPB760N** and **OPB760T** series devices are designed for PCBoard mounting and have 0.04" (10 mm) long leads. **OPB770N** and **OPB770T** series devices are designed for remote mounting with two mounting tags and have 12" (305 mm) long, UL approved 26 AWG wires.

All devices in this series offer the added stability of a built-in hysteresis amplifier.

Custom electrical, wire and cabling and connectors are available. Contact your local representative or OPTEK for more information.

**Applications:**

- Non-contact Photologic® reflective object sensor
- Assembly line automation
- Machine automation
- Machine safety
- End of travel sensor
- Door sensor

Ordering Information					
Part Number	LED Peak Wavelength	Sensor Photologic®	Reflection Distance (Inch) Min / Max	Mounting	Tabs
OPB760N	890 nm	Totem-Pole	0.080" / 0.220"	PCBoard .40" (10.160 mm) leads)	No tabs
OPB761N		Open Collector			2 tabs
OPB762N		Inv-Totem-Pole			No tabs
OPB763N		Inv-Open Collector			2 tabs
OPB760T		Totem-Pole			No tabs
OPB761T		Open Collector			2 tabs
OPB762T		Inv-Totem-Pole			No tabs
OPB763T		Inv-Open Collector			2 tabs
OPB770NZ		Totem-Pole			No tabs
OPB771NZ		Open Collector			2 tabs
OPB772NZ		Inv-Totem-Pole		No tabs	
OPB773NZ		Inv-Open Collector		2 tabs	
OPB770TZ		Totem-Pole		No tabs	
OPB771TZ		Open Collector		2 tabs	
OPB772TZ		Inv-Totem-Pole		No tabs	
OPB773TZ		Inv-Open Collector		2 tabs	



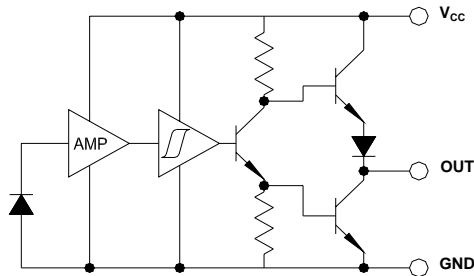
**RoHS**

OPTEK reserves the right to make changes at any time in order to improve design and to supply the best product possible.

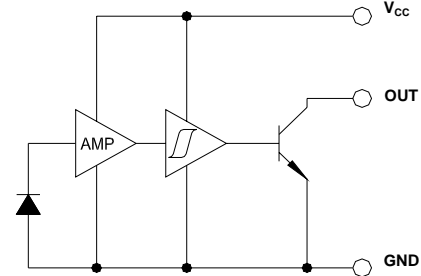
**Photologic® Reflective Object Sensor**  
**OPB760, OPB761, OPB762, OPB763 (Series N and T)**  
**OPB770, OPB771, OPB772, OPB773 (Series NZ and TZ)**



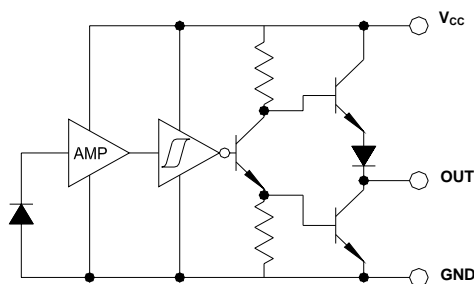
**OPB760, OPB770 Buffered Totem-Pole**



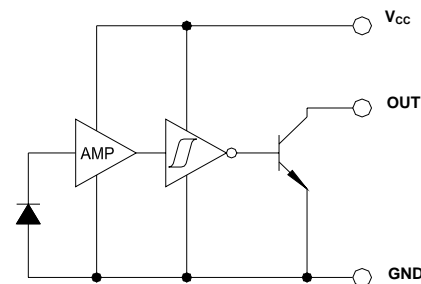
**OPB761, OPB771 Buffered Open Collector**



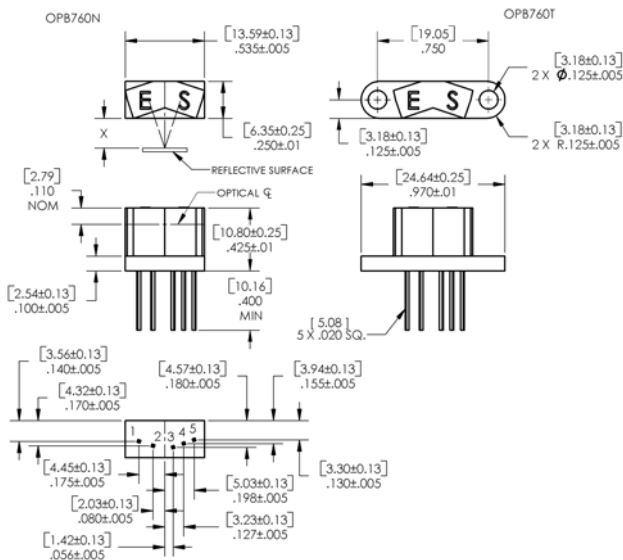
**OPB762, OPB772 Inverted Totem-Pole**



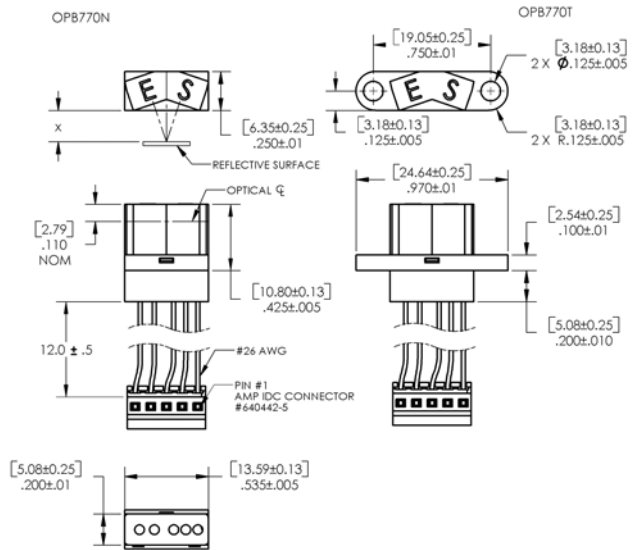
**OPB763, OPB773 Inverted Open-Collector**



**OPB760 (N and T Series)**



**OPB770 (NZ and TZ Series)**



X = 0.08" [2.0mm] to 0.22" [5.6mm]

DIMENSIONS ARE IN: [ MILLIMETERS ]  
INCHES

Pin #	Description	Pin#	Description
1	Cathode	3	Ground
2	Anode	4	Output
		5	V <sub>CC</sub>

Color/Pin#	Description	Color/Pin#	Description
Red-4	Anode	White-1	V <sub>CC</sub>
Black-5	Cathode	Blue-2	Output
		Green-3	Ground

OPTEK reserves the right to make changes at any time in order to improve design and to supply the best product possible.