

BTE6000 / PTU6000 Series

Precision stainless steel pressure transmitters



FEATURES

- 0...-1 to 0...350 bar,
0...-15 to 0...5000 psi
gage¹ or absolute¹¹
- For corrosive media
- Flush mount versions
- 0...10 V, 1...6 V, 0...20 mA,
4...20 mA output
- Field interchangeable
- For harsh environments

MEDIA COMPATIBILITY

Wetted materials:
stainless steel 1.4404 (316L), NBR¹²

Housing:
stainless steel 1.4404 (316L), protection class IP 65
(according to DIN EN 60529) respectively NEMA 4X¹

SPECIFICATIONS^{9,10}

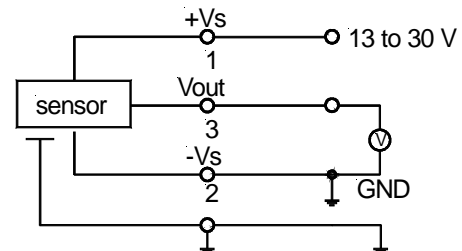
Maximum ratings

Supply voltage (reverse polarity protection)	
BTE(M)/PTU6...0, ...1	13...30 V
BTE(M)/PTU6...4, ...5 ²	12...36 V
Maximum load current	
BTE(M)/PTU6...0, ...1	10 mA
Temperature limits	
Storage	-55 to 100°C
Operating	-40 to 100°C
Compensated	0 to 70°C
Humidity limits	0 - 95 %RH
Vibration (5 to 500 Hz)	10 g _{RMS}
Mechanical shock	50 g
Proof pressure ³	2 x rated pressure

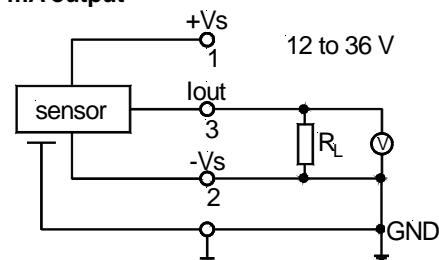


ELECTRICAL CONNECTION

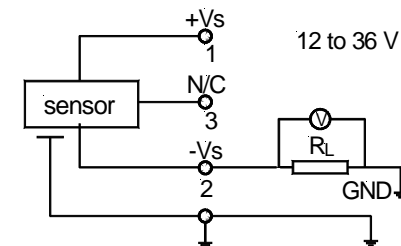
0...10 V, 1...6 V output



0...20 mA output



4...20 mA output



BTE6000 / PTU6000 Series

Precision stainless steel pressure transmitters

COMMON PERFORMANCE CHARACTERISTICS¹

Characteristics		Min.	Typ.	Max.	Unit	
Operating pressure	BTEM6200...	0		200	mbar	
	BTEM6350...	0		350		
Operating pressure	BTE6001...	0		1	bar	
	BTE6N01...	-1		+1		
	BTE6P01...	-1		0		
	BTE6002...	0		2		
	BTE6005...	0		5		
	BTE6010...	0		10		
	BTE6016...	0		16		
	BTE6035...	0		35		
	BTE6070...	0		70		
	BTE6350...	0		350		
	PTU6003...	0		3		psi
	PTU6005...	0		5		
	PTU6015...	0		15		
PTU6N15...	-15		+15			
PTU6P15...	-15		0			
PTU6030...	0		30			
PTU6100...	0		100			
PTU6250...	0		250			
PTU6500...	0		500			
PTU61K0...	0		1000			
PTU65K0...	0		5000			
Thermal effects (0 to 70°C) ⁴	Offset		0.01	0.03	%FSO/°C	
	Span		0.01	0.03		
200/300 mbar, 3/5 psi only	Offset			0.06		
	Span			0.04		
Thermal effects (-40 to 0°C, 70 to 100°C)	Offset		0.03			
	Span		0.03			
Non-linearity and hysteresis (BSL) ⁵			±0.1	±0.5	%FSO	
Repeatability			±0.1			
Long term stability ⁶			±0.2			
Output noise (0 < f < 1 kHz)			±0.04			
Response time (10 to 90 %)			1		ms	
Power supply rejection	Offset		0.05		%FSO/V	
	Span		0.05			