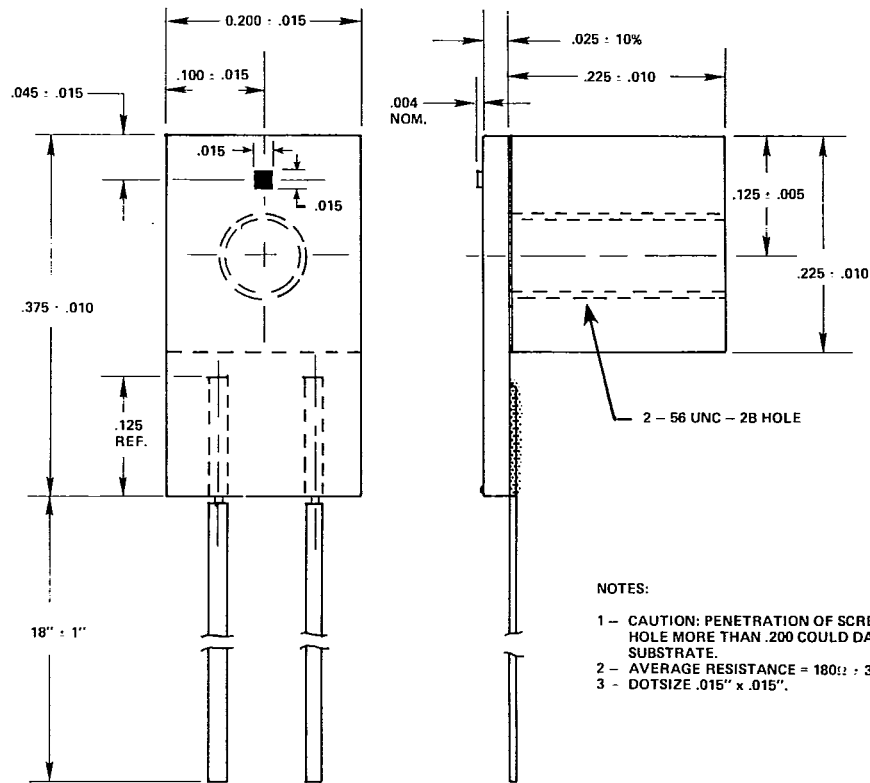


## DM101 THERMAL PEN

The DM101-18x18 is a one-dot assembly configured for use as a thermal pen. It can replace a hotwire stylus with about a tenfold improvement in thermal time constant. As a consequence, it can be pulsed on and off to produce dotted traces without being lifted off the chartpaper. It may be operated in the dc mode but printing power must be varied linearly with the slewrate to avoid burn-out. (Note - See TP1-004 for a cylindrical thermal pen design).



**NOTES:**

- 1 - CAUTION: PENETRATION OF SCREW INTO HOLE MORE THAN .200 COULD DAMAGE SUBSTRATE.
- 2 - AVERAGE RESISTANCE = 180Ω ± 30%.
- 3 - DOTSIZE .015" x .015".

DC POWER VERSUS PAPER SPEED  
(3M161 PAPER - STD. ALUM. HEATSINK)

