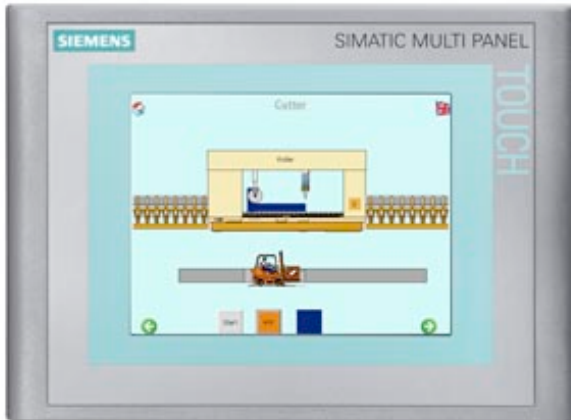


AS OF 2015-01-01 THE PRODUCT IS BLOCKED FOR DELIVERY AND IS NO LONGER AVAILABLE AS A NEW PART. INFORMATION ABOUT SUCCESSOR SEE SIMATIC UPDATE ID: 62977695 FOR FURTHER QUESTIONS PLEASE APPROACH YOUR SIEMENS CONTACT PERSON. SIMATIC MP 177 6" TOUCH MULTI PANEL W. RETENTIVE MEMORY 5.7" TFT DISPLAY 2 MB CONFIGURING MEMORY, CONFIGURABLE WITH WINCC FLEXIBLE 2008 COMPACT OR HIGHER



General information	
Customer-specific configuration	Yes
Display	
Design of display	TFT
Screen diagonal	5.7 in
Number of grayscales	0
Number of colors	65 536
Color type	Colors
Resolution (pixels)	
• Horizontal image resolution	320 Pixel
• Vertical image resolution	240 Pixel
Backlighting	
• MTBF backlighting (at 25 °C)	50 000 h
Control elements	
Control elements	Touch screen
Keyboard fonts	
• System keys	No
• Numeric/alphabetical input	Yes (on-screen keyboard) / Yes (on-screen keyboard)

— hexadecimal keyboard	Yes; Onscreen keyboard
<b>Touch operation</b>	
• Design as touch screen	Yes; analog, resistive
<b>Connection type</b>	
• Connection for mouse/keyboard/barcode reader	USB / USB / USB
<b>Installation type/mounting</b>	
Mounting position	vertical
<b>Supply voltage</b>	
Type of supply voltage	DC
<b>Processor</b>	
Processor type	RISC 32-bit, 520 MHz
<b>Memory</b>	
Type of memory	Flash / RAM
Memory available for user data	2 Mbyte
Main memory	
• Capacity of main memory, max.	128 Mbyte
<b>Time of day</b>	
<b>Clock</b>	
• Type	Hardware clock, battery backup, synchronizable
• retentive	Yes
• synchronizable	Yes
<b>Interfaces</b>	
Interfaces/bus type	1 x RS422, 1 x RS485, 1 x Ethernet (RJ45) (max. 12 Mbit/s)
Number of RS 485 interfaces	1; together with RS422
• Transmission rate, max.	12 Mbit/s
USB port	1 x USB
Multimedia card/SD card slot	combined, from E-status 016 in connection with WinCC flexible 2008 SP1, MMC max. 128 MB / SD max. 512 MB
With software interfaces	No
<b>Industrial Ethernet</b>	
• Industrial Ethernet interface	1 x Ethernet (RJ45)
• Industrial Ethernet status LED	2
<b>Protocols</b>	
Supports protocol for PROFINET IO	Yes
PROFIsafe	No
PROFIBUS	Yes
MPI	Yes
<b>Protocols (Ethernet)</b>	
• TCP/IP	Yes

<b>Protocols (terminal link)</b>	
• Sm@rtServer	Yes
<b>Further protocols</b>	
• EtherNet/IP	Yes
• MODBUS	Yes
• other bus systems	Yes
<b>EMC</b>	
<b>Emission of radio interference acc. to EN 55 011</b>	
• Limit class A, for use in industrial areas	Yes; EN 61000-6-4, interference emission: Intended for use in industrial areas.
<b>Degree and class of protection</b>	
Front	IP65, NEMA 4, NEMA 4x, NEMA 12 (when installed)
IP (at the front)	IP65
IP (rear)	IP20
<b>Standards, approvals, certificates</b>	
Certifications	CE, GL, FM Class I Div. 2, cULus, C-TICK, NEMA 4, NEMA 4x, NEMA 12
cULus	Yes
EMC	The product is designed for use in industrial environments. When used in residential areas, the emission of radio interference according to limit class B of EN 55011 must be ensured. For further information refer to the user documentation
Suitable for safety functions	No
<b>Marine approval</b>	
• Germanischer Lloyd (GL)	Yes
• American Bureau of Shipping (ABS)	No
• Bureau Veritas (BV)	No
• Det Norske Veritas (DNV)	No
• Lloyds Register of Shipping (LRS)	No
• Nippon Kaiji Kyokai (Class NK)	No
• Polski Rejestr Statkow (PRS)	No
<b>Use in hazardous areas</b>	
• FM Class I Division 2	Yes
• EX zone 2	No
• EX zone 22	No
<b>Ambient conditions</b>	
<b>Ambient temperature during operation</b>	
• min.	0 °C
• max.	50 °C
<b>Ambient temperature during storage/transportation</b>	
• min.	-20 °C

• max.	70 °C
<b>Relative humidity</b>	
• Operation, max.	90 %

### Operating systems

pre-installed operating system	Windows CE (Version 5)
--------------------------------	------------------------

### Configuration

Message indicator	Yes
Alarm system (incl. buffer and acknowledgment)	Yes
Process value display (output)	Yes
Process value default (input) possible	Yes
Recipe management	Yes

### Configuration software

• STEP 7 Basic (TIA Portal)	No
• STEP 7 Professional (TIA Portal)	No
• WinCC flexible Compact	Yes
• WinCC flexible Standard	Yes
• WinCC flexible Advanced	Yes
• WinCC Basic (TIA Portal)	No
• WinCC Comfort (TIA Portal)	Yes
• WinCC Advanced (TIA Portal)	Yes
• WinCC Professional (TIA Portal)	Yes
• Configuration tool	WinCC flexible Compact Version 2008 SP1 or higher (to be ordered separately)

### Languages

#### Online languages

• Number of online/runtime languages	5
--------------------------------------	---

#### Project languages

• Languages per project	32
-------------------------	----

### Functionality under WinCC (TIA Portal)

Libraries	Yes
-----------	-----

Task planner	Yes
--------------	-----

Help system	Yes
-------------	-----

• Number of characters per info text	70
--------------------------------------	----

#### Message system

• Number of alarm classes	32
---------------------------	----

• Number of messages	2 000
----------------------	-------

• Bit messages	Yes
----------------	-----

— Number of bit messages	2 000
--------------------------	-------

• Analog messages	Yes
-------------------	-----

— Number of analog messages	2 000
-----------------------------	-------

• Telegram message procedure Alarm S	Yes
--------------------------------------	-----

• System messages HMI	Yes
• System messages PLC	Yes
• System messages, other (SIMATIC S7, Sinumerik, Simotion, etc.)	Yes
• Lines	1
• Number of characters per message	80
• Number of process values per message	8
• Acknowledgment groups	
— Number of acknowledgement groups	Yes
• Message indicator	Yes
• First/last value	Yes
<b>Recipe management</b>	
• Number of recipes	100
• Data records per recipe	200
• Entries per data record	200
• Recipe memory	32 KB integrated Flash, expandable
<b>Variables</b>	
• Number of variables per device	1 000
• Number of variables per screen	50
• Number of variables	1 000
• Type Date & Time	1 000
• Limit values	Yes
• Multiplexing	Yes
• Structures	No
<b>Images</b>	
• Number of configurable images	500
• Permanent window/default	Yes
• Start screen configurable	Yes
• Image selection by PLC	Yes
• Image number in the PLC	Yes
<b>Image objects</b>	
• Text objects	2,500 text elements
• Number of I/O fields per image	50
• Number of date/time fields	30
• Return	Yes
• Graphics object	Bit maps, icons, vector graphics
— Icons	500
<b>Complex image objects</b>	
• Status/control	With SIMATIC S7
• dynamic objects	Diagrams, bar graphs, sliders, analog display, invisible buttons
— Number of objects per project	500

— Number of curve diagrams per image	5
• Methods	Trend / profile
• Bar graphs	
— Number of bars per chart	5
• Sliders	
— Number of slides per image	5
• Pointer instruments	
— Number of analog indicators per image	5
• Limit value lines	Yes
• Number of alphanumeric fields	1 000
— alphanumeric fields per image	50
• Number of numerical fields	1 000
— numerical fields per image	50
• Number of password fields	1 000
• Number of visible switches per project	1 000
— visible switches per image	100
— hidden switches per image	100
• Number of status switches per project	1 000
— Number of status switches per image	100
• Number of selector switches per project	200
— Selector switches per image	100
• Number of signal lamps per project	1 000
— Signal lamps per image	100
<b>Attributes for dynamic objects</b>	
• Color change	Yes
• X/Y movement	Yes
• Hide	Yes
• Angle of rotation	No
<b>Lists</b>	
• Number of text lists per project	300
• Number of text lists per image	10
• Number of entries per text list	30
• Number of graphics lists per project	100
• Number of graphic lists per image	10
• Number of entries per graphics list	30
<b>Security</b>	
• Number of user groups	50
• Number of user rights	32
• Password export/import	Yes
<b>Logging through printer</b>	
• Recording/Printing	Alarms, report (shift report), color print, hardcopy

<b>Transfer (upload/download)</b>	
• Transfer of configuration	MPI/PROFIBUS DP, serial, USB, Ethernet, automatic transfer recognition
<b>Process coupling</b>	
• Connection to controller	S5, S7-200, S7- 300/400, TI 505, Win AC, SINUMERIK, SIMOTION, Allen Bradley (DF1), Allen Bradley (DF485), Mitsubishi (FX), OMRON (LINK/Multilink), Modicon (Modbus), weitere Fremdtreiber siehe Kapitel "Systemkopplungen"
• S7-1200	Yes
• S7-1500	Yes
• S7-200	Yes
— PPI (point-to-point)	Yes
— PPI network	Yes
— MPI	Yes
— PROFIBUS DP	Yes
— Ethernet	Yes
• S7-300/400	Yes
— MPI	Yes
— PROFIBUS DP	Yes
— PROFINET	Yes
• S5	Yes
— PROFIBUS DP	Yes
• TI 505	Yes
• Allen Bradley (DF1)	Yes
• Allen Bradley (DF485)	Yes
• Mitsubishi (FX)	Yes
• Mitsubishi (MP4)	Yes
• Telemecanique (Uni-Telway)	Yes
• OMRON (LINK/Multilink)	Yes
• Modicon (Modbus)	Yes
• GE-Fanuc (SNP)	Yes
<b>Functions</b>	
• TAB sequence	Yes
• Calculating functions	Yes
• Animate	Yes
<b>Service tools/configuration aids</b>	
• Clean screen	Yes
• Touch calibration	Yes
• Backup/Restore manually	Yes
• Simulation	Yes
• Device switchover	Yes
<b>Peripherals/Options</b>	

Peripherals	Printer, barcode reader
<ul style="list-style-type: none"> <li>• SIMATIC HMI MM memory card: Multi Media Card</li> </ul>	Yes
<ul style="list-style-type: none"> <li>• SIMATIC HMI SD memory card: Secure Digital memory card</li> </ul>	Yes; WP gate is not supported.
<ul style="list-style-type: none"> <li>• USB memory</li> </ul>	Yes
Additional software components loadable	Yes

### Dimensions

Width of the housing front	212 mm
Height of housing front	156 mm
Mounting cutout, width	198 mm
Mounting cutout, height	142 mm
Overall depth	45 mm

### Weights

Weight (without packaging)	0.85 kg; max.
----------------------------	---------------

### Other

free hotline	Yes
Warranty period	1 y; 10 years replacement from discontinuation
<b>last modified:</b>	04/28/2017