

Shock-Safe Fuseholder, 5 x 20 / 6.3 x 32 mm, Slotted Cap



Socket with Slotted Cap  
**Caps must be ordered separately (see accessories)**

Socket with Slotted Cap

Socket with Fingergrip Cap

250 VAC · 4 W/10 A (VDE)20/16 A (UL/CSA)



**Description**

- Quick-connect or solder terminals

**Standards**

- IEC 60127-6
- UL 512
- CSA C22.2 no. 39


**Approvals**

- Approval Reference Type: FEU
- VDE Certificate Number: 134125
- UL File Number: E39328
- CSA File Number: 38456

**Weblinks**

[pdf datasheet](#), [html-datasheet](#), [General Product Information](#), [Packaging details](#), [Approvals](#), [CE declaration of conformity](#), [RoHS](#), [CHINA-RoHS](#), [REACH](#), [Distributor-Stock-Check](#), [Accessories](#), [Detailed request for product](#)

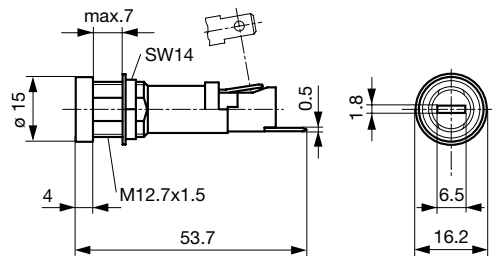
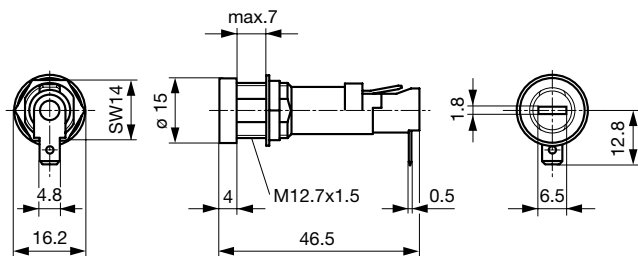
**Technical Data**

|                              |   |
|------------------------------|---|
| Shock-Safe Category          | PC2   |
| Fuse-Link                    | 5 x 20 or 6.3 x 32 mm   |
| Mounting                     | Panel Mount, Front Side   |
| Attachment                   | Fixing Nut  |
| Terminal                     | Solder or Quick-Connect 4.8 x 0.5 mm  |
| Rated Voltage                | 250 VAC   |
| Rated current                | 10 A (VDE), 20/16 A (UL/CSA)  |
| Rated Power Acceptance IEC   | 4 W / 10 A @ Ta 23 °C<br>Admissible power acceptance at higher ambient temperature see derating curves                              |
| Degree of Protection         | IP 40   |
| Protection Class             | Suitable for appliances with protection class I or II acc. to IEC 61140   |
| Admissible Ambient Air Temp. | -40 °C to 85 °C   |
| Climatic Category            | 40/085/21 acc. to IEC 60068-1   |
| Material: Socket             | Thermoplastic, black, UL 94V-0  |
| Material: Terminals          | Tin-Plated Copper Alloy   |
| Unit Weight                  | 5.5 g / 3.22 g  |
| Storage Conditions           | 0 °C to 60 °C, max. 70% r.h.  |
| Product Marking              |  , Type, Rated Voltage, Rated current, Approvals |

|                                 |  |
|---------------------------------|--|
| Soldering Methods               | Iron<br><a href="#">Soldering Profile</a>                                    |
| Solderability                   | 350 °C / 2 - 3 sec acc. to IEC 60068-2-20, Test Ta, method 2                 |
| Resistance to Soldering Heat    | 350 °C / 10 sec acc. to IEC 60068-2-20, Test Tb, method 2                    |
| Contact Resistance              | ≤ 10 mΩ at 20 mV acc. to IEC 60127-6   |
| Dielectric Strength             | > 3 kV<br>> 4 kV between L/N-PE (50 Hz; 1 min)                               |
| Impulse Withstand Voltage       | > 4 kV between L-N<br>> 6 kV between Front Panel and L/N                     |
| Insulation Resistance           | > 10 MΩ between L-N<br>> 100 MΩ between Front Panel and L/N (500 VDC; 1 min) |
| Overvoltage Category            | III acc. to IEC 60664-1  |
| Pollution Degree                | 3 acc. to IEC 60664-1  |
| Admissible Torque on Fixing Nut | max 1.2 Nm   |
| Panel Thickness                 | max 7 mm   |

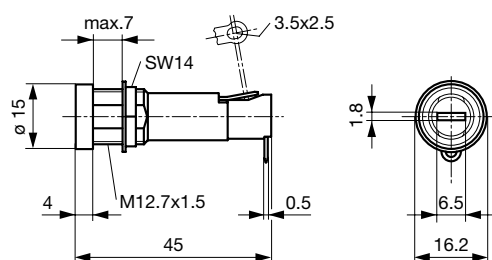
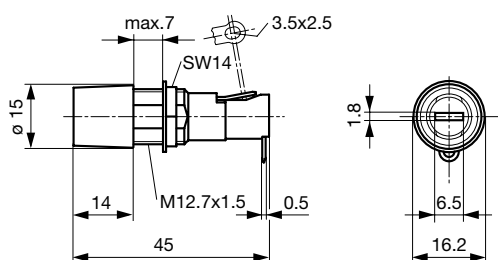
Detailed information on product approvals, code requirements, usage instructions and detailed test conditions can be looked up in [General Product Information](#)

Dimension



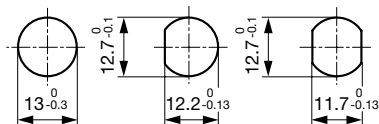
Variants: 0031.1693

Variant 0031.1694



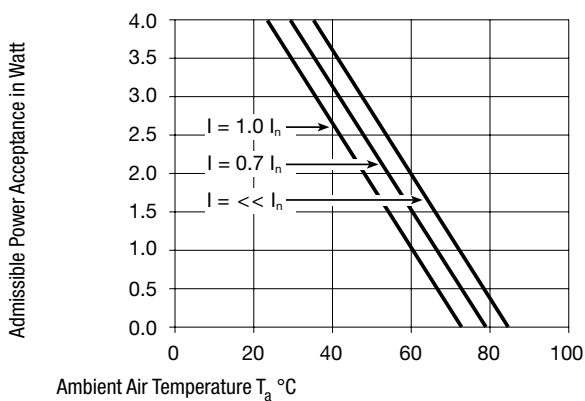
Variants 0031.1653

Variant 0031.1673



Mounting holes

Derating Curves



All Variants

| Holder | Cap | Fuse-Link            | Terminal                | Position End-Terminal | Degree of Protection | Colour Cap | Remark                 | Order Number |
|--------|-----|----------------------|-------------------------|-----------------------|----------------------|------------|------------------------|--------------|
| ●      | -   | 5 x 20 or 6.3 x 32mm | Quick-Connect 4.8 x 0.5 | 90° to Fuse Axis      | IP 40                | -          | -                      | 0031.1693    |
| ●      | -   | 5 x 20 or 6.3 x 32mm | Quick-Connect 4.8 x 0.5 | Straight to Fuse Axis | IP 40                | -          | -                      | 0031.1694    |
| ●      | -   | 5 x 20 or 6.3 x 32mm | Solder                  | 90° to Fuse Axis      | IP 40                | -          | -                      | 0031.8822    |
| ●      | -   | 5 x 20 or 6.3 x 32mm | Solder                  | 90° to Fuse Axis      | IP 40                | -          | -                      | 0031.1653    |
| ●      | -   | 5 x 20 or 6.3 x 32mm | Solder                  | 90° to Fuse Axis      | IP 40                | -          | See details in drawing | 0031.1673    |

Most Popular.

Availability for all products can be searched real-time: <http://www.schurter.com/en/Stock-Check/Stock-Check-SCHURTER>

**Packaging Unit** Bulk (100 pcs.)

Required Accessory

Description



Fingerrip FEU, FAU, FAC  
Caps Fingerrip for Holder FEU, FAU, FAC

Caps to FEU, FAU, FAC  
Caps to Holder FEU, FEU (Med), FAU, FAC