

# REFERENCE DATA

## 1. Standard type (Contact Gap 1.5 mm .059 inch type) (Contact Gap 1.8 mm .071 inch type)

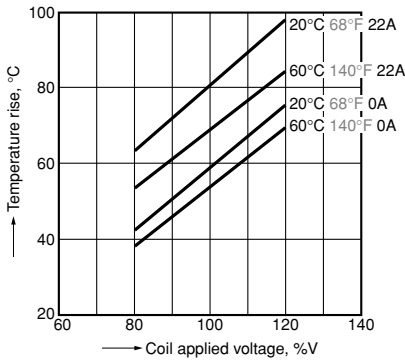
### 1. Coil temperature rise

Sample: ALFG1PF09, ALFG1PF091, 6 pcs.

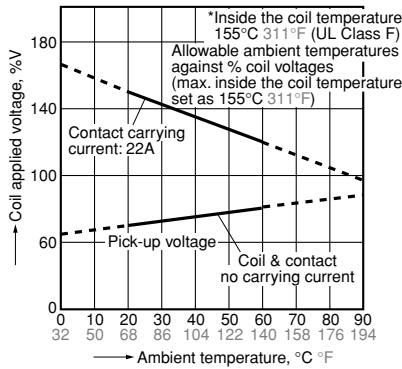
Point measured: coil inside

Ambient temperature: 20°C 68°F, 60°C 140°F

Contact carrying current: 22A



### 2. Ambient temperature characteristics and coil applied voltage



## 3. Electrical life test

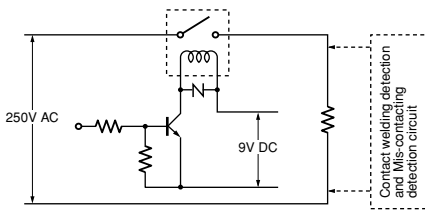
(22A 250V AC Resistive load)

Sample: ALFG1PF09, ALFG1PF091, 6 pcs.

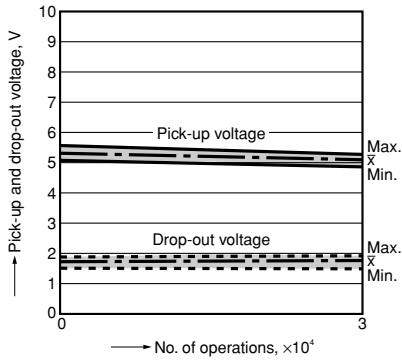
Operation frequency: ON:OFF = 1.5s:1.5s

Ambient temperature: 85°C 185°F

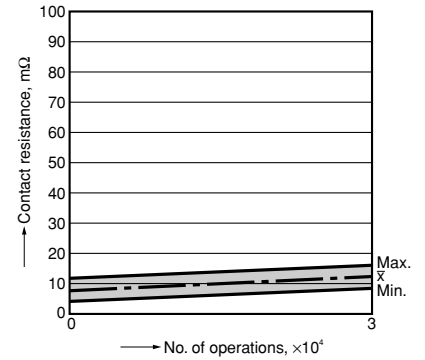
Circuit:



### Change of pick-up and drop-out voltage



### Change of contact resistance



## 4. Electrical life test

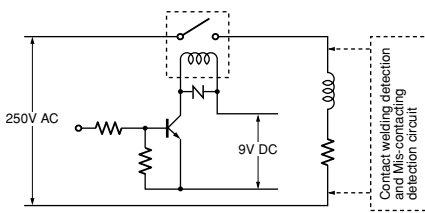
(22A 250V AC cosφ = 0.8 Inductive load)

Sample: ALFG1PF09, ALFG1PF091, 6 pcs.

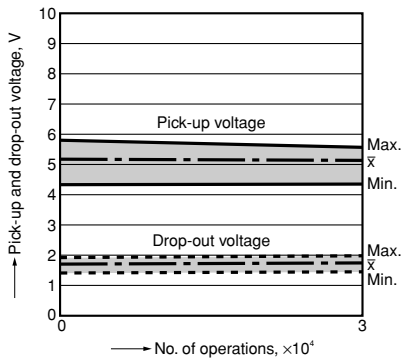
Operation frequency: ON:OFF = 0.1s:10s

Ambient temperature: 85°C 185°F

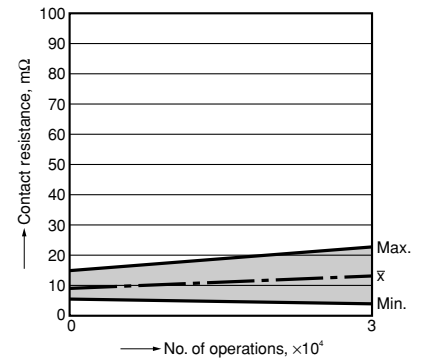
Circuit:



### Change of pick-up and drop-out voltage



### Change of contact resistance

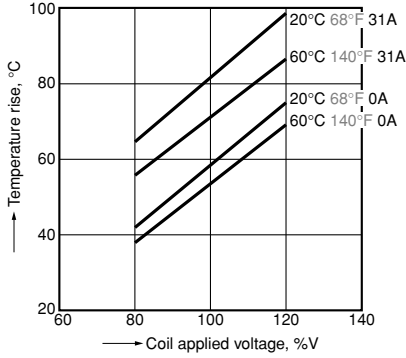


# LF-G (ALFG)

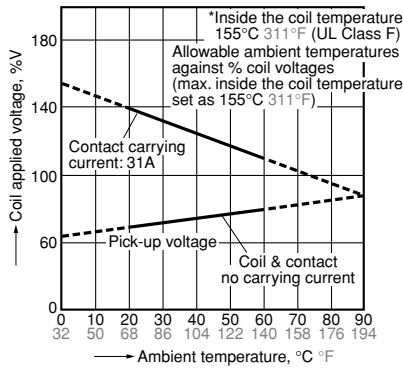
## 2. High capacity type (Contact Gap 1.5 mm .059 inch type)

### 1. Coil temperature rise

Sample: ALFG2PF09, 6 pcs.  
 Point measured: coil inside  
 Ambient temperature: 20°C 68°F, 60°C 140°F  
 Contact carrying current: 31A



### 2. Ambient temperature characteristics and coil applied voltage

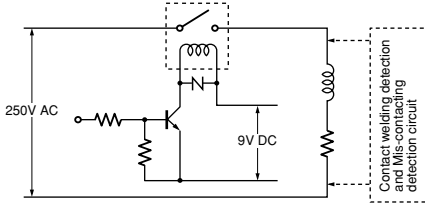


### 3. Electrical life test

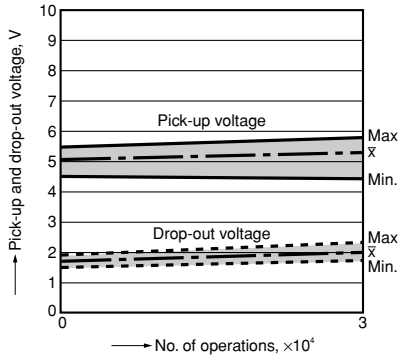
(31A 250V AC  $\cos\phi = 0.8$  Inductive load)

Sample: ALFG2PF09, 6 pcs.  
 Operation frequency: ON:OFF = 0.1s:10s  
 Ambient temperature: 85°C 185°F

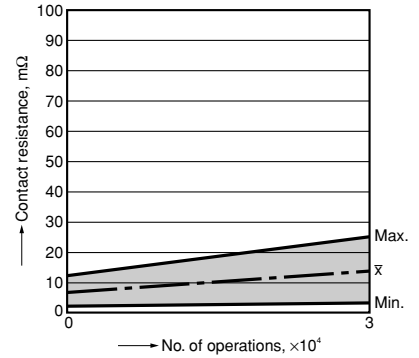
#### Circuit:



### Change of pick-up and drop-out voltage



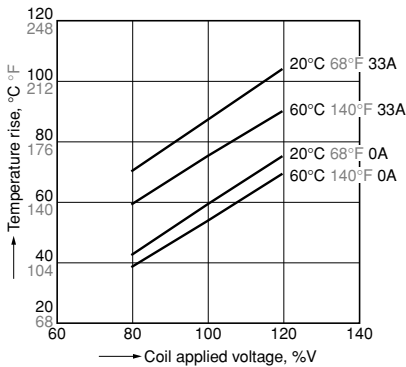
### Change of contact resistance



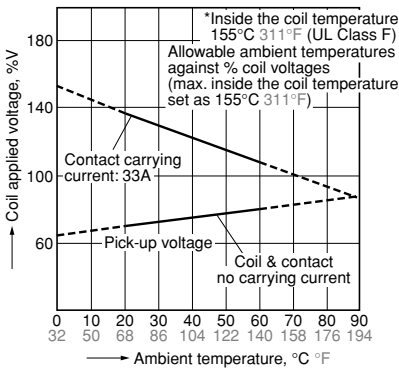
## 3. High capacity type (Contact Gap 1.8 mm .071 inch type)

### 1. Coil temperature rise

Sample: ALFG2PF091, 6 pcs.  
 Point measured: coil inside  
 Ambient temperature: 20°C 68°F, 60°C 140°F  
 Contact carrying current: 33A



### 2. Ambient temperature characteristics and coil applied voltage

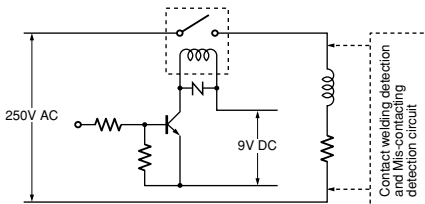


### 3. Electrical life test

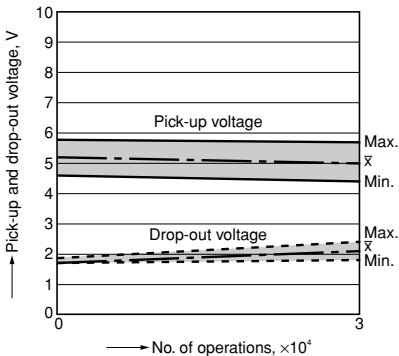
(33A 250V AC  $\cos\phi = 0.8$  Inductive load)

Sample: ALFG2PF091, 6 pcs.  
 Operation frequency: ON:OFF = 0.1s:10s  
 Ambient temperature: 85°C 185°F

#### Circuit:



### Change of pick-up and drop-out voltage



### Change of contact resistance

