

- Up to 96 % efficiency
  - No heat-sink required
- Pin compatible with LMxx linear regulators
- SIP-package fits existing TO-220 footprint
- Built in filter capacitors
- Operation temp. range  $-40^{\circ}\text{C}$  to  $+85^{\circ}\text{C}$
- Short circuit protection
- Wide input operating range
- Excellent line / load regulation
- Low standby current
- 3-year product warranty



The TSR-1 series step-down switching regulators are drop-in replacement for inefficient 78Xx linear regulators. A high efficiency up to 96 % allows full load operation up to  $+60^{\circ}\text{C}$  ambient temperature without the need of any heat-sink or forced cooling. The TSR-1 switching regulators provide other significant features over linear regulators, i.e. better output accuracy ( $\pm 2\%$ ), lower standby current of 2 mA and no requirement of external capacitors. The high efficiency and low standby power consumption makes these regulators an ideal solution for many battery powered applications.

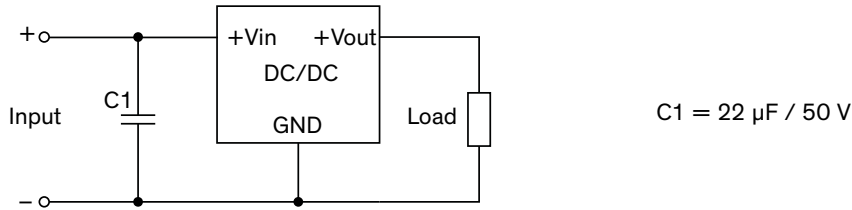
Models					
Order code	Input voltage range	Output voltage	Output current max.	Efficiency typ.	
				@ Vin min.	@ Vin max.
TSR 1-2412	4.6 – 36 VDC*	1.2 VDC	1.0 A	74 %	62 %
TSR 1-2415	4.6 – 36 VDC*	1.5 VDC		78 %	65 %
TSR 1-2418	4.6 – 36 VDC*	1.8 VDC		82 %	69 %
TSR 1-2425	4.6 – 36 VDC*	2.5 VDC		87 %	75 %
TSR 1-2433	4.75 – 36 VDC*	3.3 VDC		91 %	78 %
TSR 1-2450	6.5 – 36 VDC*	5.0 VDC		94 %	84 %
TSR 1-2465	9.0 – 36 VDC*	6.5 VDC		93 %	87 %
TSR 1-2490	12 – 36 VDC*	9.0 VDC		95 %	90 %
TSR 1-24120	15 – 36 VDC*	12 VDC		95 %	92 %
TSR 1-24150	18 – 36 VDC*	15 VDC		96 %	94 %

\* For input voltage higher than 32 VDC an input capacitor 22  $\mu\text{F}$  / 50 V is required. See application notes (page 3)

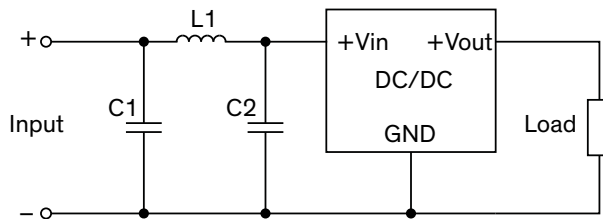


### Applications notes

For input voltage higher than 32 VDC (max. 36 VDC)

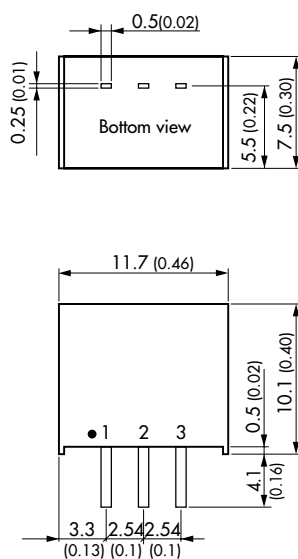


Suggested filter to comply with EN55032 Class A limits



Models	C1 & C2	L1	inductor (accessory)	
			order code	datasheet
all models	10 $\mu\text{F}$ / 50 V 1206 MLCC	5.6 $\mu\text{H}$ / 3.5 A	<b>TCK-141</b>	<a href="http://www.tracopower.com/products/tck141.pdf">www.tracopower.com/products/tck141.pdf</a>

### Outline Dimensions



#### Pin-Out

1	+Vin
2	GND
3	+Vout

Dimensions in [mm], () = Inch  
 Pin pitch tolerances:  $\pm 0.25$  ( $\pm 0.01$ )  
 Pin profile tolerance:  $\pm 0.1$  ( $\pm 0.004$ )  
 Other tolerances:  $\pm 0.5$  ( $\pm 0.02$ )