

### EMC: Emissions

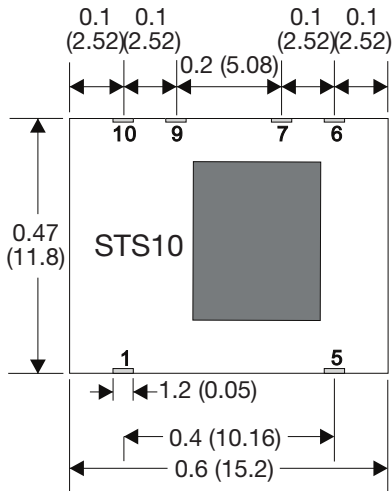
Phenomenon	Standard	Test Level	Notes & Conditions
Conducted	EN55032	Class B	With external components, see application note
Radiated	EN55032	Class B	

### EMC: Immunity

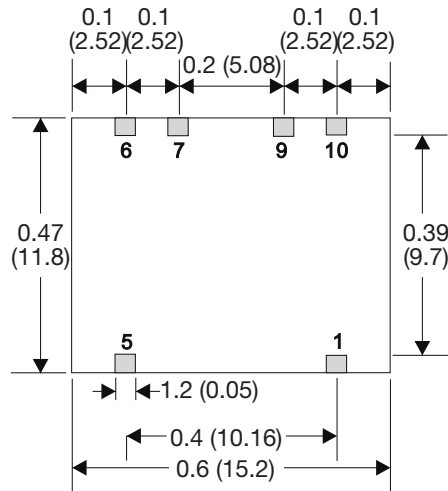
Phenomenon	Standard	Test Level	Criteria	Notes & Conditions
ESD	EN61000-4-2	±8 kV air discharge	A	
Radiated	EN61000-4-3	3 V/m	A	
EFT/Burst	EN61000-4-4	±0.5 kV	A	See application note
Surge	EN61000-4-5	±1 kV	A	See application note
Conducted	EN61000-4-6	3 V rms	A	
Magnetic Fields	EN61000-4-8	3 A/m	A	

### Mechanical Details

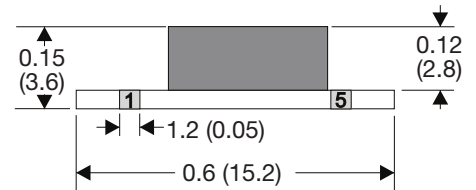
Top View



Bottom View



Side View



Pin Connections	
Pin	Function
1	+Vin
5	+Vout
6	Trim
7	-Vout
9	-Vin
10	Remote On/Off

### Notes

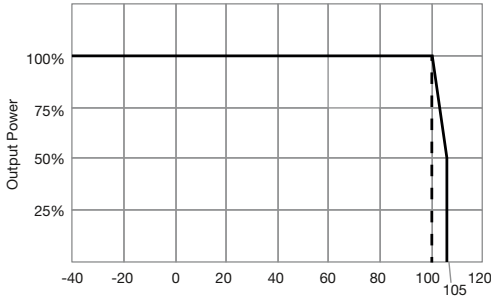
- All dimensions are in inches (mm)
- Weight: 0.0022 lbs (1.4 g) approx.
- Pin Profile Tolerance: ±0.004 (±0.1)

- Pin Pitch Tolerance: ±0.01 (±0.25)
- Other Tolerances: ±0.02 (±0.5)

### Application Notes

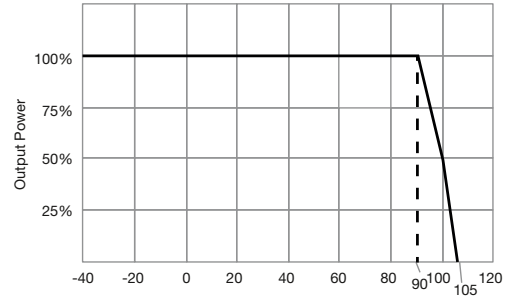
#### Derating Curve

##### STS1005



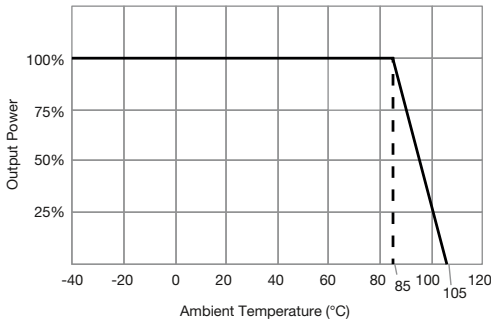
##### STS1024

Vo= 1.2 V and 1.5 V



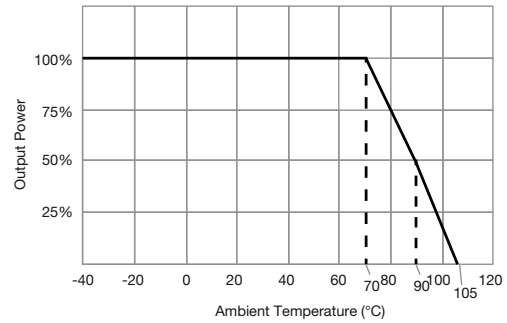
##### STS1024

Vo= 1.8 V, 2.5 V, 3.3 V and 5 V



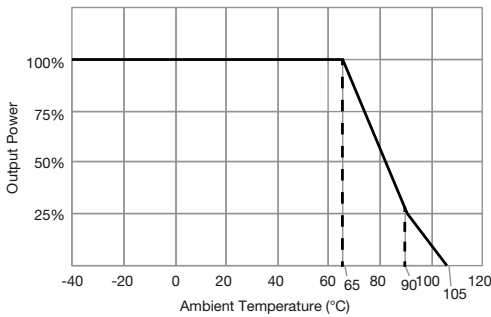
##### STS1024

Vo= 6.5 V and 9 V

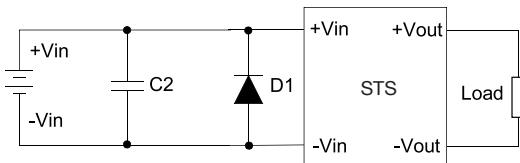


##### STS1024

Vo= 12 V and 15 V



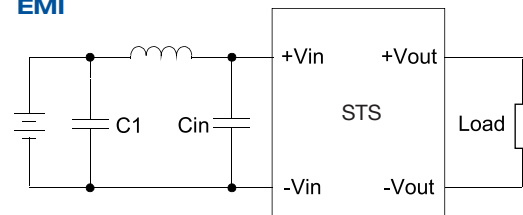
#### EFT & Surge



Suggested Filter : 5Vin models : Nippon - chemi - con KY series, 2200  $\mu$ F/50 V and a TVS, 3 KW , 6.0 V 24 Vin models : Nippon - chemi - con KY series , 330  $\mu$ F/100V and a TVS, 3KW/36V

	C2	D1
5 V	2200 $\mu$ F, 50 V	SMDJ 6.0 A
24 V	330 $\mu$ F, 100 V	SMDJ 36.0 A

#### EMI



Input filter components (Cin, C1, L1) are used to help meet EMI requirement for the module. These components should be mounted as close as possible to the module; and all leads should be minimized to decrease radiated noise.

	C1	L1	Cin
5 V	1206, 10 $\mu$ F, 50 V	6.8 $\mu$ H	1206, 10 $\mu$ F, 50 V
24 V	1206, 4.7 $\mu$ F, 50 V	33 $\mu$ H	1206, 10 $\mu$ F, 50 V