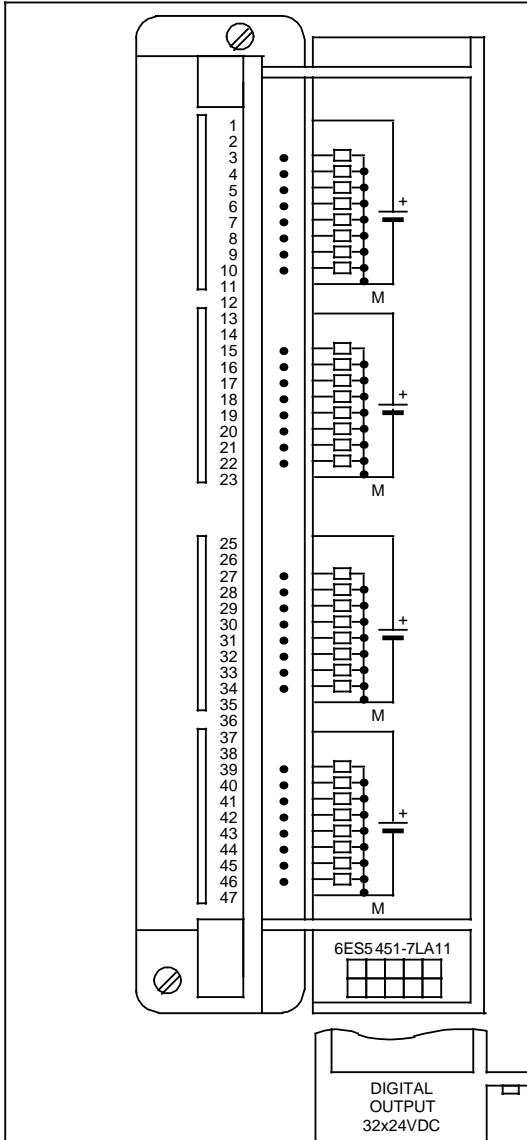
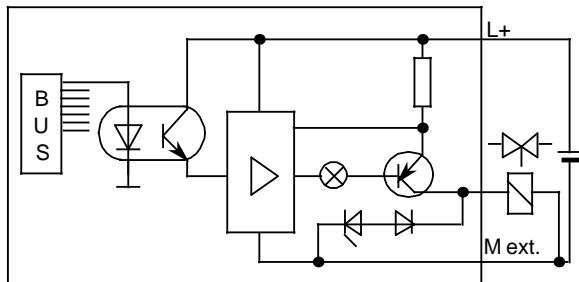


**Digital Output Module 32 x 24 V DC; 0.5 A, Floating**

**(6ES5 451-7LA11)**



**Terminal Assignment**



**Simplified Schematic**

**Technical Specifications**

<b>Number of outputs</b>		<b>32</b>
<b>Galvanically isolated</b>		<b>yes (optocoupler)</b>
<b>- in groups of</b>		<b>8</b>
<b>Load voltage L+</b>		
- rated value		<b>24 V DC</b>
- permissible range		<b>20 to 30 V</b>
- surge voltage at t 0.5 sec.		<b>35 V</b>
<b>Output voltage</b>		
- for "1" signal	<b>min.</b>	<b>L+ -2.5 V</b>
<b>Output current</b>		
for "1" signal		
- rated value		<b>0.5 A</b>
- lamp load	<b>max.</b>	<b>5 W</b>
<b>Leakage current</b>		
for "0" signal	<b>max.</b>	<b>1 mA</b>
<b>Parallel connection of outputs</b>		<b>not possible</b>
<b>Permissible total current of outputs</b>		<b>100% at 25°C and 50% at 55°C (related to the sum of the currents)</b>
<b>Short circuit protection</b>		<b>electronic</b>
<b>Limitation of the voltage induced on circuit interruption</b>		<b>- 15 V</b>
<b>Switching frequency</b>		
- inductive load	<b>max.</b>	<b>0.5 Hz</b>
- resistive load	<b>max.</b>	<b>100 Hz</b>
<b>Cable length</b>		
- shielded		<b>1000 m (3281 ft.)</b>
- unshielded		<b>600 m (1969 ft.)</b>
<b>Isolation rating</b>		<b>according to VDE 0160</b>
<b>Rated isolation voltage (between groups)</b>		<b>30 V DC</b>
- isolation group		<b>C</b>
- tested at		<b>500 V AC</b>
<b>Rated isolation voltage (L+ to <math>\perp</math>)</b>		<b>30 V DC</b>
- isolation group		<b>C</b>
- tested at		<b>500 V AC</b>
<b>Current consumption</b>		
- from 5 V (internal)		<b>100 mA</b>
- from L+ (without load)		<b>17 mA / per group</b>
<b>Power losses of the module</b>	<b>typ.</b>	<b>20 W</b>
<b>Weight</b>	<b>approx.</b>	<b>0.7 kg (1.54 lb.)</b>