

BASIC CHARACTERISTICS (T <sub>amb</sub> = 25 °C, unless otherwise specified)							
PARAMETER	TEST CONDITION	PART	SYMBOL	MIN.	TYP.	MAX.	UNIT
<b>INPUT (EMITTER)</b>							
Forward voltage	I <sub>F</sub> = 60 mA		V <sub>F</sub>		1.25	1.6	V
Junction capacitance	V <sub>R</sub> = 0 V, f = 1 MHz		C <sub>j</sub>		50		pF
<b>OUTPUT (DETECTOR)</b>							
Collector emitter voltage	I <sub>C</sub> = 1 mA		V <sub>CEO</sub>	70			V
Emitter collector voltage	I <sub>E</sub> = 10 μA		V <sub>ECO</sub>	7			V
Collector dark current	V <sub>CE</sub> = 25 V, I <sub>F</sub> = 0 A, E = 0 lx		I <sub>CEO</sub>			100	nA
<b>SWITCHING CHARACTERISTICS</b>							
Turn-on time	I <sub>C</sub> = 2 mA, V <sub>S</sub> = 5 V, R <sub>L</sub> = 100 Ω (see figure 2)		t <sub>on</sub>		10		μs
Turn-off time	I <sub>C</sub> = 2 mA, V <sub>S</sub> = 5 V, R <sub>L</sub> = 100 Ω (see figure 2)		t <sub>off</sub>		8		μs

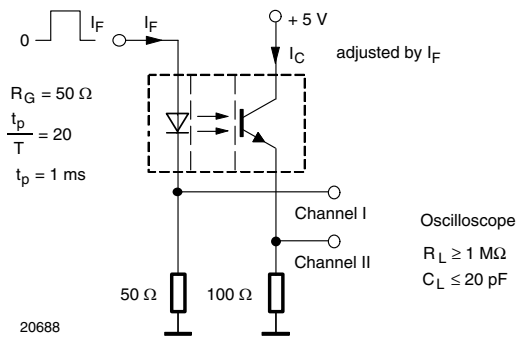
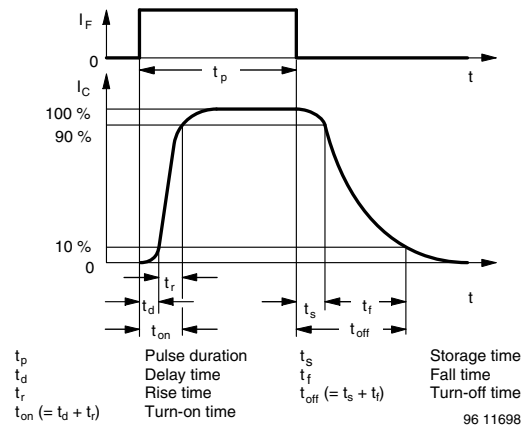

 Fig. 2 - Test Circuit for t<sub>on</sub> and t<sub>off</sub>


Fig. 3 - Switching Times

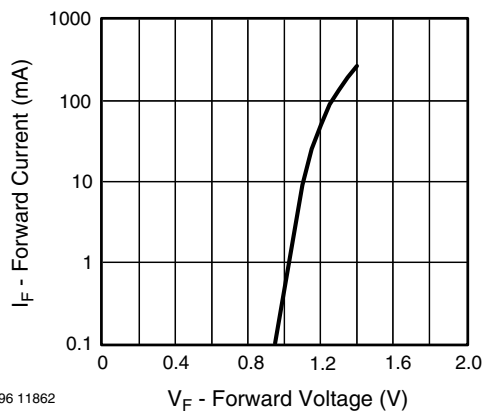
**BASIC CHARACTERISTICS** (T<sub>amb</sub> = 25 °C, unless otherwise specified)


Fig. 4 - Forward Current vs. Forward Voltage

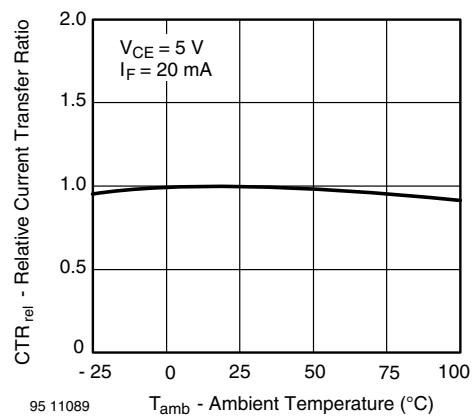


Fig. 5 - Relative Current Transfer Ratio vs. Ambient Temperature

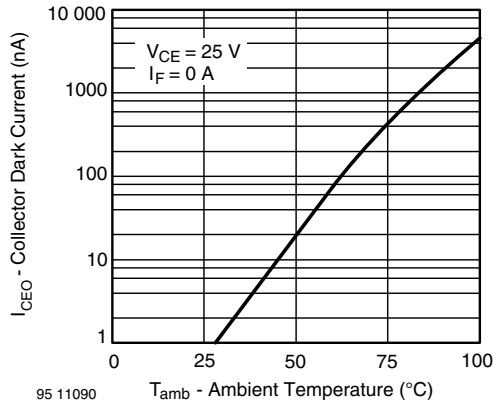


Fig. 6 - Collector Dark Current vs. Ambient Temperature

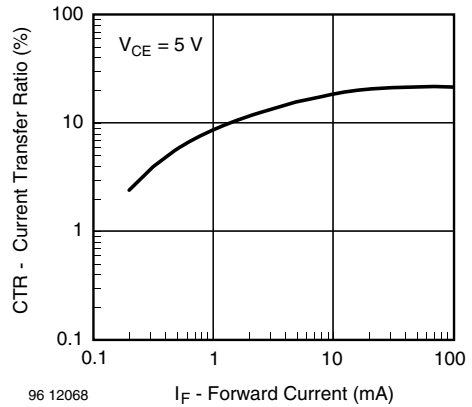


Fig. 9 - Current Transfer Ratio vs. Forward Current

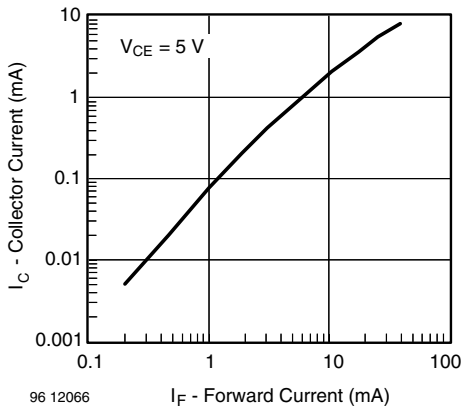


Fig. 7 - Collector Current vs. Forward Current

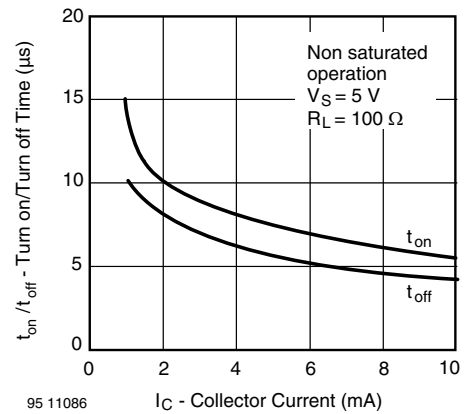


Fig. 10 - Turn-off/Turn-on Time vs. Collector Current

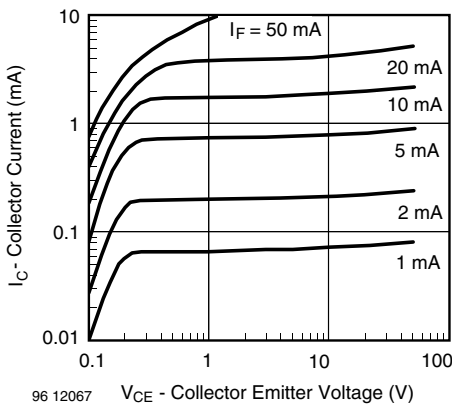


Fig. 8 - Collector Current vs. Collector Emitter Voltage

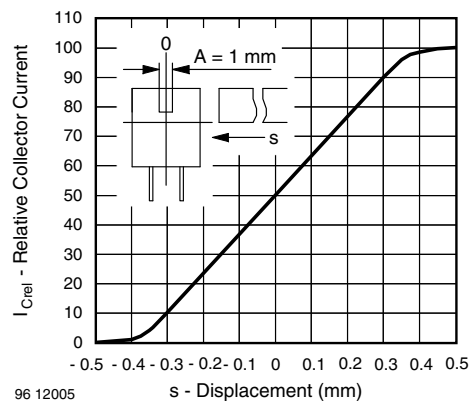


Fig. 11 - Relative Collector Current vs. Displacement