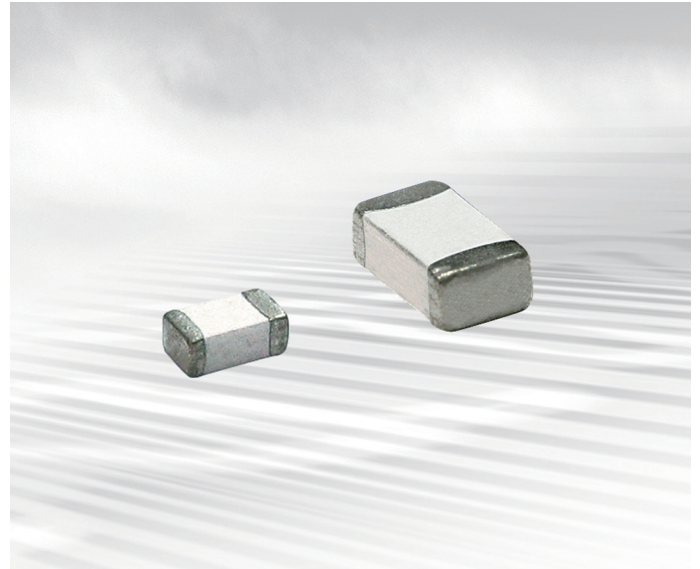


# SURFACE-MOUNT FUSES

## Slow-Blow Chip Fuses

Available in industry standard 1206 and 0603 chip sizes, Littelfuse slow-blow chip fuses help provide overcurrent protection on systems that experience large and frequent current surges as part of their normal operation.

The slow-blow chip fuse's monolithic, multilayer design helps provide some of the highest current ratings available in the 1206 and 0603 footprints and enhances high-temperature performance in a wide range of circuit protection designs. The devices' small size, high reliability and strong arc suppression characteristics make them suitable for overcurrent protection of power supplies, capacitor filter banks, Liquid Crystal Display (LCD) backlight inverters, electric motors and portable electronics.



### BENEFITS

- Time-delayed design prevents nuisance openings in pulsed and high inrush current applications
- Small size with high-current ratings
- Strong arc suppression characteristics

### FEATURES

- Lead-free materials and RoHS compliant
- Halogen free  
(refers to: Br≤900ppm, Cl≤900ppm, Br+Cl≤1500ppm)
- Monolithic multilayer design
- High-temperature performance
- -55°C to +125°C operating temperature range

### APPLICATIONS

- Small motors systems
- Portable electronics
- Input power ports
- Power over Ethernet (PoE)
- Test equipment
- POL converter protection
- Computer drives
- Displays
- Printers

# Surface Mount Fuses

## Slow-Blow Chip Fuses

### Table FS1 – Clear Time Characteristics

#### 0603SFS Series

| % of Rated Current | Clear Time at 25°C |              |
|--------------------|--------------------|--------------|
| 100%               | 4 hrs (min)        | —            |
| 200%               | 1 s (min)          | 120 s (max)  |
| 300%               | 0.1 s (min)        | 3 s (max)    |
| 800% (1.0A-1.5A)   | 0.0005 s (min)     | 0.05 s (max) |
| 800% (2.0A-5.0A)   | 0.001 s (min)      | 0.05 s (max) |

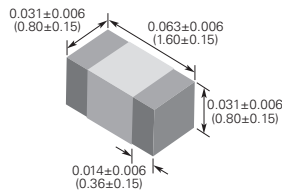
#### 1206SFS Series

| % of Rated Current | Clear Time at 25°C |              |
|--------------------|--------------------|--------------|
| 100%               | 4 hrs (min)        | —            |
| 200%               | 1 s (min)          | 120 s (max)  |
| 300%               | 0.1 s (min)        | 3 s (max)    |
| 800% (1.0A-1.5A)   | 0.0016 s (min)     | 0.05 s (max) |
| 800% (2.0A-8.0A)   | 0.002 s (min)      | 0.05 s (max) |

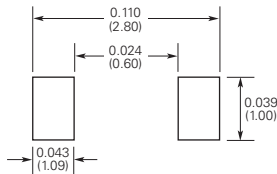
### Table FS2 – Typical Electrical Characteristics, Dimensions and Recommended Pad Layout

#### 0603 (1608 mm) Slow-Blow Chip Fuses

Shape and Dimensions in (mm)

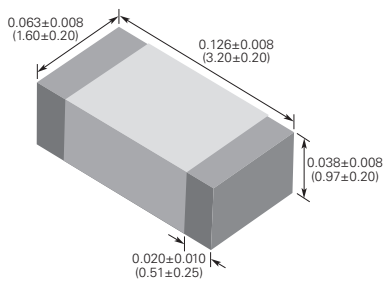


Recommended Pad Layout in (mm)

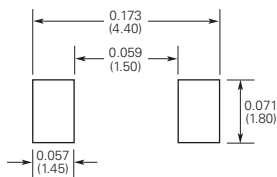


#### 1206 (3216 mm) Slow-Blow Chip Fuses

Shape and Dimensions in (mm)



Recommended Pad Layout in (mm)



| Part Number    | Typical Electrical Characteristics |                       |  | Max Interrupt Ratings      |             |
|----------------|------------------------------------|-----------------------|--|----------------------------|-------------|
|                | Rated Current (A)                  | Nominal Cold DCR (Ω)* | Nominal I <sup>2</sup> t (A <sup>2</sup> sec) <sup>†</sup> | Voltage (V <sub>DC</sub> ) | Current (A) |
| 0603SFS100F/32 | 1.0                                | 0.200                 | 0.093  | 32                         | 50          |
| 0603SFS150F/32 | 1.5                                | 0.100                 | 0.18   | 32                         | 50          |
| 0603SFS200F/32 | 2.0                                | 0.052                 | 0.32   | 32                         | 50          |
| 0603SFS250F/32 | 2.5                                | 0.041                 | 0.63   | 32                         | 50          |
| 0603SFS300F/32 | 3.0                                | 0.031                 | 0.87   | 32                         | 50          |
| 0603SFS350F/32 | 3.5                                | 0.021                 | 1.20   | 32                         | 50          |
| 0603SFS400F/32 | 4.0                                | 0.017                 | 2.30   | 32                         | 50          |
| 0603SFS450F/32 | 4.5                                | 0.015                 | 2.70   | 32                         | 50          |
| 0603SFS500F/32 | 5.0                                | 0.013                 | 3.20   | 32                         | 50          |

| Part Number    | Typical Electrical Characteristics |                       |  | Max Interrupt Ratings      |             |
|----------------|------------------------------------|-----------------------|--|----------------------------|-------------|
|                | Rated Current (A)                  | Nominal Cold DCR (Ω)* | Nominal I <sup>2</sup> t (A <sup>2</sup> sec) <sup>†</sup> | Voltage (V <sub>DC</sub> ) | Current (A) |
| 1206SFS100F/63 | 1.0                                | 0.360                 | 0.11   | 63                         | 50          |
| 1206SFS125F/63 | 1.25                               | 0.200                 | 0.22   | 63                         | 50          |
| 1206SFS150F/63 | 1.5                                | 0.150                 | 0.23   | 63                         | 50          |
| 1206SFS200F/63 | 2.0                                | 0.088                 | 0.63   | 63                         | 50          |
| 1206SFS250F/32 | 2.5                                | 0.065                 | 0.90   | 32                         | 50          |
| 1206SFS300F/32 | 3.0                                | 0.034                 | 1.20   | 32                         | 50          |
| 1206SFS350F/32 | 3.5                                | 0.028                 | 1.60   | 32                         | 50          |
| 1206SFS400F/32 | 4.0                                | 0.024                 | 2.20   | 32                         | 50          |
| 1206SFS450F/32 | 4.5                                | 0.020                 | 3.60   | 32                         | 50          |
| 1206SFS500F/32 | 5.0                                | 0.016                 | 5.30   | 32                         | 50          |
| 1206SFS550F/24 | 5.5                                | 0.014                 | 6.40   | 24                         | 50          |
| 1206SFS600F/24 | 6.0                                | 0.011                 | 8.50   | 24                         | 60          |
| 1206SFS700F/24 | 7.0                                | 0.010                 | 10.00  | 24                         | 60          |
| 1206SFS800F/24 | 8.0                                | 0.009                 | 16.90  | 24                         | 60          |

\* Measured at ≤10% of rated current and 25°C ambient temperature.  
<sup>†</sup> Melting I<sup>2</sup>t at 0.001 sec clear time.