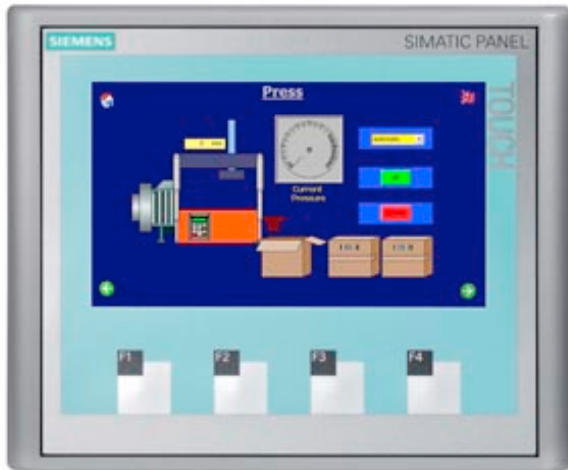


AS OF 2015-01-01 THE PRODUCT IS BLOCKED FOR DELIVERY AND IS NO LONGER AVAILABLE AS A NEW PART. INFORMATION ABOUT SUCCESSOR SEE SIMATIC UPDATE ID: 62977695 FOR FURTHER QUESTIONS PLEASE APPROACH YOUR SIEMENS CONTACT PERSON. SIMATIC TP177B 4" COLOR PN/DP TFT 256 COLOR-16:9-DISPLAY, MPI-/PROFIBUS-DP - PROTOCOL RS485-/RS422-/USB - INTERFACE ETHERNET10/100 INTERFACE PRINTER - INTERFACE SLOT FOR MM-CARD CONFIGURABLE WITH WINCC FLEXIBLE 2008



General information	
Customer-specific configuration	Yes
Display	
Design of display	TFT
Screen diagonal	4.3 in
Number of grayscales	0
Number of colors	256
Color type	Colors
Resolution (pixels)	
• Horizontal image resolution	480 Pixel
• Vertical image resolution	272 Pixel
Backlighting	
• MTBF backlighting (at 25 °C)	30 000 h
Control elements	
Control elements	Touch screen and membrane keyboard
Keyboard fonts	
• Membrane keyboard	
— user-definable label membrane keys	Yes

<ul style="list-style-type: none"> • Function keys <ul style="list-style-type: none"> — Number of function keys — Number of function keys with LEDs • System keys • Numeric/alphabetical input <ul style="list-style-type: none"> — hexadecimal keyboard • Multi-key operation 	<p>4</p> <p>0</p> <p>No</p> <p>Yes (on-screen keyboard) / Yes (on-screen keyboard)</p> <p>Yes; Onscreen keyboard</p> <p>Yes</p>
Touch operation	
<ul style="list-style-type: none"> • Design as touch screen 	Yes; analog, resistive
Connection type	
<ul style="list-style-type: none"> • Connection for mouse/keyboard/barcode reader 	USB / USB / USB
Installation type/mounting	
Mounting position	vertical
maximum permissible angle of inclination without external ventilation	35°
Supply voltage	
Type of supply voltage	DC
Input current	
Current consumption (rated value)	0.2 A
Starting current inrush I ² t	0.1 A ² ·s
Processor	
Processor type	RISC 32-bit, 266 MHz
Memory	
Type of memory	Flash / RAM
Memory available for user data	2 048 kbyte
Main memory <ul style="list-style-type: none"> • Capacity of main memory, max. 	64 Mbyte
Time of day	
Clock	
<ul style="list-style-type: none"> • Type • retentive • synchronizable 	<p>Hardware clock, synchronizable, no battery backup</p> <p>No</p> <p>Yes</p>
Interfaces	
Interfaces/bus type	RS232 optional, 1 x RS422, 1 x RS485, 1 x Ethernet (RJ45) (max. 12 Mbit/s)
Number of RS 485 interfaces <ul style="list-style-type: none"> • Transmission rate, max. 	<p>1</p> <p>12 Mbit/s</p>
USB port	1 x USB
PC card slot	No

CF card slot	No
Multimedia card/SD card slot	combined, from E-status 016 in connection with WinCC flexible 2008 SP1, MMC max. 128 MB / SD max. 512 MB
With software interfaces	No
Industrial Ethernet	
• Industrial Ethernet interface	1 x Ethernet (RJ45)
• Industrial Ethernet status LED	1
Protocols	
Supports protocol for PROFINET IO	Yes
PROFIsafe	No
PROFIBUS	Yes
MPI	Yes
Protocols (Ethernet)	
• TCP/IP	Yes
Protocols (terminal link)	
• Sm@rtServer	Yes
Further protocols	
• EtherNet/IP	Yes
• MODBUS	Yes
• other bus systems	Yes
Degree and class of protection	
Front	IP65, NEMA 4, NEMA 4x, NEMA 12 (when installed)
IP (at the front)	IP65
IP (rear)	IP20
Standards, approvals, certificates	
Certifications	CE, GL, FM Class I Div. 2, cULus, C-TICK, NEMA 4, NEMA 4x, NEMA 12
cULus	Yes
EAC (formerly Gost-R)	No
Suitable for safety functions	No
Marine approval	
• Germanischer Lloyd (GL)	Yes
• American Bureau of Shipping (ABS)	No
• Bureau Veritas (BV)	No
• Det Norske Veritas (DNV)	No
• Lloyds Register of Shipping (LRS)	No
• Nippon Kaiji Kyokai (Class NK)	No
• Polski Rejestr Statkow (PRS)	No
Use in hazardous areas	
• FM Class I Division 2	Yes
• EX zone 2	No

- EX zone 22

No

Ambient conditions

Ambient temperature during operation

- min. 0 °C
- max. 50 °C

Ambient temperature during storage/transportation

- min. -20 °C
- max. 60 °C

Relative humidity

- Operation, max. 90 %

Operating systems

pre-installed operating system Windows CE (Version 5)

Configuration

Message indicator	Yes
Alarm system (incl. buffer and acknowledgment)	Yes
Process value display (output)	Yes
Process value default (input) possible	Yes
Recipe management	Yes

Configuration software

• STEP 7 Basic (TIA Portal)	No
• STEP 7 Professional (TIA Portal)	No
• WinCC flexible Compact	Yes
• WinCC flexible Standard	Yes
• WinCC flexible Advanced	Yes
• WinCC Basic (TIA Portal)	No
• WinCC Comfort (TIA Portal)	Yes
• WinCC Advanced (TIA Portal)	Yes
• WinCC Professional (TIA Portal)	Yes
• Configuration tool	WinCC flexible Compact Version 2008 or higher (to be ordered separately)

Languages

Online languages

- Number of online/runtime languages 5

Project languages

- Languages per project 32

Functionality under WinCC (TIA Portal)

Libraries	Yes
Task planner	Yes
Help system	Yes
• Number of characters per info text	70

Message system	
• Number of alarm classes	32
• Number of messages	2 000
• Bit messages	Yes
— Number of bit messages	2 000
• Analog messages	Yes
— Number of analog messages	2 000
• Telegram message procedure Alarm S	Yes
• System messages HMI	Yes
• System messages PLC	Yes
• System messages, other (SIMATIC S7, Sinumerik, Simotion, etc.)	No
• Lines	1
• Number of characters per message	80
• Number of process values per message	8
• Acknowledgment groups	
— Number of acknowledgement groups	Yes
• Message indicator	Yes
• acoustic feedback	No
• First/last value	Yes
Recipe management	
• Number of recipes	100
• Data records per recipe	200
• Entries per data record	200
• Recipe memory	32 KB integrated Flash, expandable
Variables	
• Number of variables per device	1 000
• Number of variables per screen	50
• Number of variables	1 000
• Initial values	1 000
• Type Date & Time	1 000
• Limit values	Yes
• Multiplexing	Yes
• Structures	No
Images	
• Number of configurable images	500
• Permanent window/default	Yes
• Start screen configurable	Yes
• Image selection by PLC	Yes
• Image number in the PLC	Yes
Image objects	

• Text objects	2,500 text elements
• Number of I/O fields per image	50
• Number of date/time fields	30
• Index of screen context	No
• Return	Yes
• Graphics object	Bit maps, icons, icon (full-screen), vector graphics
— Icons	500
— Icon (full screen)	50
Complex image objects	
• Status/control	With SIMATIC S7
• dynamic objects	Diagrams, bar graphs, sliders, analog display, invisible buttons
— Number of objects per project	500
— Number of curve diagrams per image	5
• Methods	Trend
• Bar graphs	
— Number of bars per chart	5
• Sliders	
— Number of slides per image	5
• Pointer instruments	
— Number of analog indicators per image	5
• Limit value lines	Yes
• Number of alphanumerical fields	1 000
— alphanumeric fields per image	50
• Number of numerical fields	1 000
— numerical fields per image	50
• Number of password fields	1 000
• Number of visible switches per project	1 000
— visible switches per image	100
— hidden switches per image	100
• Number of status switches per project	1 000
— Number of status switches per image	100
• Number of selector switches per project	1 000
— Selector switches per image	100
• Number of decade switches per project	0
— Decade switches per image	0
• Number of signal lamps per project	1 000
— Signal lamps per image	100
Attributes for dynamic objects	
• Color change	Yes
• X/Y movement	Yes
• Hide	Yes

• Angle of rotation	No
Lists	
• Number of text lists per project	300
• Number of text lists per image	10
• Number of entries per text list	30
• Number of graphics lists per project	100
• Number of graphic lists per image	10
• Number of entries per graphics list	30
Security	
• Number of user groups	50
• Number of user rights	32
• Password export/import	Yes
Data carrier support	
• PC card	No
• CF card	No
Logging through printer	
• Recording/Printing	Alarms, report (shift report), color print, hardcopy
Transfer (upload/download)	
• Transfer of configuration	MPI/PROFIBUS DP, serial, USB, Ethernet, by means of external storage medium, automatic transfer recognition
Process coupling	
• Connection to controller	S5, S7-200, S7- 300/400, TI 505, SINUMERIK, SIMOTION, Allen Bradley (DF1), Allen Bradley (DF485), Mitsubishi (FX), OMRON (LINK/Multilink), Modicon (Modbus), weitere Fremdtreiber siehe Kapitel "Systemkopplungen"
• S7-1200	Yes
• S7-1500	No
• S7-200	Yes
— PPI (point-to-point)	Yes
— PPI network	Yes
— MPI	Yes
— PROFIBUS DP	Yes
— Ethernet	Yes
• S7-300/400	Yes
— MPI	Yes
— PROFIBUS DP	Yes
— PROFINET	Yes
• S5	Yes; only PROFIBUS DP
— serial	No
— PROFIBUS DP	Yes
• TI 505	Yes
• Allen Bradley (DF1)	Yes

• Allen Bradley (DF485)	Yes
• Mitsubishi (FX)	Yes
• Mitsubishi (MP4)	No
• Telemecanique (ADJUST)	No
• Telemecanique (Uni-Telway)	Yes
• OMRON (LINK/Multilink)	Yes
• Modicon (Modbus)	Yes
• GE-Fanuc (SNP)	Yes
Functions	
• Key repeat	No
• TAB sequence	Yes
• Calculating functions	Yes
• Animate	Yes
• Menu tree editor	Yes
• Unit switchover	No
Service tools/configuration aids	
• Clean screen	No
• Touch calibration	Yes
• Backup/Restore manually	Yes
• Simulation	Yes
• Device switchover	Yes
• Delta transfer	No
• Monitoring function for battery and memory	No
• Trace (operation archive)	No
Expandability/openness	
• Open Platform Program	Yes
Peripherals/Options	
Peripherals	Printer
• SIMATIC HMI MM memory card: Multi Media Card	Yes
• SIMATIC HMI SD memory card: Secure Digital memory card	Yes
• USB memory	Yes
Additional software components loadable	Yes
Dimensions	
Width of the housing front	140 mm
Height of housing front	116 mm
Mounting cutout, width	123 mm
Mounting cutout, height	99 mm
Overall depth	48 mm
Weights	

Weight (without packaging)

0.5 kg; max.

last modified:

04/28/2017