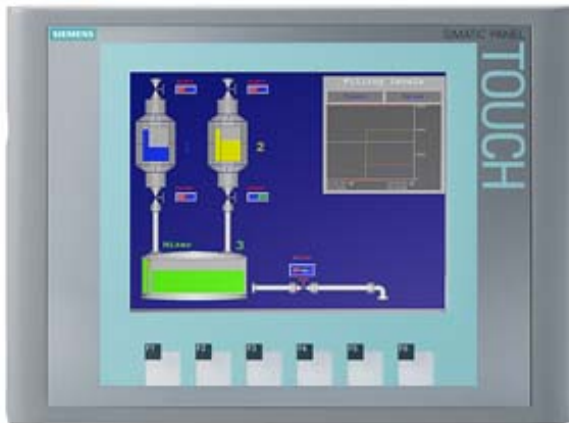


SIMATIC HMI KTP600 BASIC COLOR PN, BASIC PANEL, KEY AND TOUCH OPERATION, 6" TFT DISPLAY, 256 COLORS, PROFINET INTERFACE, CONFIGURATION FROM WINCC FLEXIBLE 2008 SP2 COMPACT/ WINCC BASIC V10.5/ STEP7 BASIC V10.5, CONTAINS OPEN SOURCE SW WHICH IS PROVIDED FREE OF CHARGE FOR DETAILS SEE CD



## General information

Product type designation	SIMATIC HMI KTP600 Basic color PN
--------------------------	-----------------------------------

## Display

Design of display	TFT
Screen diagonal	5.7 in
Display width	115.2 mm
Display height	86.4 mm
Number of colors	256

## Resolution (pixels)

• Horizontal image resolution	320 Pixel
• Vertical image resolution	240 Pixel

## Backlighting

• MTBF backlighting (at 25 °C)	50 000 h
• Backlight dimmable	No

## Control elements

### Keyboard fonts

• Function keys	
— Number of function keys	6

• Keys with LED	No
• System keys	No
• Numeric/alphabetical input	
— Numeric keyboard	Yes; Onscreen keyboard
— alphanumeric keyboard	Yes; Onscreen keyboard
<b>Touch operation</b>	
• Design as touch screen	Yes
<b>Installation type/mounting</b>	
Mounting position	vertical
Mounting in portrait format possible	Yes
Mounting in landscape format possible	Yes
maximum permissible angle of inclination without external ventilation	35°
<b>Supply voltage</b>	
Type of supply voltage	DC
Rated value (DC)	24 V
permissible range, lower limit (DC)	19.2 V
permissible range, upper limit (DC)	28.8 V
<b>Input current</b>	
Current consumption (rated value)	0.35 A
Starting current inrush I <sup>2</sup> t	0.5 A <sup>2</sup> ·s
<b>Power</b>	
Active power input, typ.	9 W
<b>Processor</b>	
Processor type	RISC 32-bit
<b>Memory</b>	
Flash	Yes
RAM	Yes
Memory available for user data	1 Mbyte
<b>Type of output</b>	
Acoustics	
• Buzzer	Yes
• Speaker	No
<b>Time of day</b>	
<b>Clock</b>	
• Hardware clock (real-time)	No
• Software clock	Yes
• retentive	No
• synchronizable	Yes

Interfaces	
Number of industrial Ethernet interfaces	1
Number of RS 485 interfaces	0
Number of RS 422 interfaces	0
Number of RS 232 interfaces	0
Number of USB interfaces	0
Number of 20 mA interfaces (TTY)	0
Number of parallel interfaces	0
Number of other interfaces	0
Number of SD card slots	0
With software interfaces	No
Industrial Ethernet	
<ul style="list-style-type: none"> <li>Industrial Ethernet status LED</li> </ul>	2
Protocols	
PROFINET	Yes
Supports protocol for PROFINET IO	No
IRT	No
PROFIBUS	No
MPI	No
Protocols (Ethernet)	
<ul style="list-style-type: none"> <li>TCP/IP</li> <li>DHCP</li> <li>SNMP</li> <li>DCP</li> <li>LLDP</li> </ul>	Yes Yes Yes Yes Yes
WEB characteristics	
<ul style="list-style-type: none"> <li>HTTP</li> <li>HTML</li> </ul>	No No
Further protocols	
<ul style="list-style-type: none"> <li>CAN</li> <li>EtherNet/IP</li> <li>MODBUS</li> </ul>	No Yes Yes; Modicon (MODBUS TCP/IP)
Interrupts/diagnostics/status information	
Diagnostic messages	
<ul style="list-style-type: none"> <li>Diagnostic information readable</li> </ul>	No
Degree and class of protection	
IP (at the front)	IP65
Enclosure Type 4 at the front	Yes
Enclosure Type 4x at the front	Yes
IP (rear)	IP20
Standards, approvals, certificates	

CE mark	Yes
cULus	Yes
RCM (formerly C-TICK)	Yes
KC approval	Yes
<b>Marine approval</b>	
• Germanischer Lloyd (GL)	Yes
• American Bureau of Shipping (ABS)	Yes
• Bureau Veritas (BV)	Yes
• Det Norske Veritas (DNV)	Yes
• Lloyds Register of Shipping (LRS)	Yes
• Nippon Kaiji Kyokai (Class NK)	Yes
• Polski Rejestr Statkow (PRS)	Yes
<b>Use in hazardous areas</b>	
• ATEX Zone 2	No
• ATEX Zone 22	No
• cULus Class I Zone 1	No
• cULus Class I Zone 2, Division 2	No
• FM Class I Division 2	No
<b>Ambient conditions</b>	
<b>Ambient temperature during operation</b>	
• Operation (vertical installation)	
— For vertical installation, min.	0 °C
— For vertical installation, max.	50 °C
• Operation (max. tilt angle)	
— At maximum tilt angle, min.	0 °C
— At maximum tilt angle, min.	40 °C
• Operation (vertical installation, portrait format)	
— For vertical installation, min.	0 °C
— For vertical installation, max.	50 °C
• Operation (max. tilt angle, portrait format)	
— At maximum tilt angle, min.	0 °C
— At maximum tilt angle, min.	40 °C
<b>Ambient temperature during storage/transportation</b>	
• min.	-30 °C
• max.	60 °C
<b>Relative humidity</b>	
• Operation, max.	90 %; no condensation
<b>Operating systems</b>	
proprietary	Yes
<b>pre-installed operating system</b>	
• Windows CE	No

## Configuration

Message indicator	Yes
Alarm system (incl. buffer and acknowledgment)	Yes
Process value display (output)	Yes
Process value default (input) possible	Yes
Recipe management	Yes
<b>Configuration software</b>	
• STEP 7 Basic (TIA Portal)	Yes; via integrated WinCC Basic (TIA Portal)
• STEP 7 Professional (TIA Portal)	Yes; via integrated WinCC Basic (TIA Portal)
• WinCC flexible Compact	Yes
• WinCC flexible Standard	Yes
• WinCC flexible Advanced	Yes
• WinCC Basic (TIA Portal)	Yes
• WinCC Comfort (TIA Portal)	Yes
• WinCC Advanced (TIA Portal)	Yes
• WinCC Professional (TIA Portal)	Yes

## Languages

<b>Online languages</b>	
• Number of online/runtime languages	5
<b>Project languages</b>	
• Languages per project	32

## Functionality under WinCC (TIA Portal)

Libraries	Yes
Task planner	
• time-controlled	No
• task-controlled	Yes
Help system	
• Number of characters per info text	320
<b>Message system</b>	
• Number of alarm classes	32
• Bit messages	
— Number of bit messages	200
• Analog messages	
— Number of analog messages	15
• System messages HMI	Yes
• Number of characters per message	80
• Number of process values per message	8
• Message indicator	Yes
• Message buffer	
— Number of entries	256
— Circulating buffer	Yes

— retentive	Yes
— maintenance-free	Yes
<b>Recipe management</b>	
• Number of recipes	5
• Data records per recipe	20
• Entries per data record	20
• Size of internal recipe memory	40 kbyte
• Recipe memory expandable	No
<b>Variables</b>	
• Number of variables per device	500
• Number of variables per screen	30
• Limit values	Yes
• Multiplexing	Yes
• Structures	No
• Arrays	Yes
<b>Images</b>	
• Number of configurable images	50
• Permanent window/default	Yes
• Global image	Yes
• Image selection by PLC	Yes
• Image number in the PLC	Yes
<b>Image objects</b>	
• Number of objects per image	30
• Text fields	Yes
• I/O fields	Yes
• Graphic I/O fields (graphics list)	Yes
• Symbolic I/O fields (text list)	Yes
• Date/time fields	Yes
• Switches	Yes
• Buttons	Yes
• Graphic display	Yes
• Icons	Yes
• Geometric objects	Yes
<b>Complex image objects</b>	
• Number of complex objects per screen	5
• Alarm view	Yes
• Trend view	Yes
• User view	Yes
• Status/control	No
• Sm@rtClient view	No
• Recipe view	Yes

• f(x) trend view	No
• System diagnostics view	No
• Media Player	No
• Bar graphs	Yes
• Sliders	No
• Pointer instruments	No
• Analog/digital clock	No
<b>Lists</b>	
• Number of text lists per project	150
• Number of entries per text list	30
• Number of graphics lists per project	100
• Number of entries per graphics list	30
<b>Archiving</b>	
• Number of archives per device	0
<b>Security</b>	
• Number of user groups	50
• Number of user rights	32
• Number of users	50
• Password export/import	No
• SIMATIC Logon	No
<b>Character sets</b>	
• Keyboard fonts	
— US English	Yes
<b>Transfer (upload/download)</b>	
• MPI/PROFIBUS DP	No
• USB	No
• Ethernet	Yes
• using external storage medium	No
<b>Process coupling</b>	
• S7-1200	Yes
• S7-1500	Yes
• S7-200	Yes
• S7-300/400	Yes
• LOGO!	Yes
• WinAC	Yes
• SINUMERIK	No
• SIMOTION	No
• Allen Bradley (EtherNet/IP)	Yes
• Allen Bradley (DF1)	No
• Mitsubishi (MC TCP/IP)	Yes
• Mitsubishi (FX)	No

- OMRON (FINS TCP) No
- OMRON (LINK/Multilink) No
- Modicon (Modbus TCP/IP) Yes
- Modicon (Modbus) No

#### Service tools/configuration aids

- Backup/Restore manually Yes
- Backup/Restore automatically No
- Simulation Yes
- Device switchover Yes

#### Peripherals/Options

##### Peripherals

- Printer No
- SIMATIC HMI MM memory card: Multi Media Card No
- SIMATIC HMI SD memory card: Secure Digital memory card No
- USB memory No

#### Mechanics/material

##### Enclosure material (front)

- Plastic Yes
- Aluminum No
- Stainless steel No

#### Dimensions

Width of the housing front	214 mm
Height of housing front	158 mm
Mounting cutout, width	197 mm
Mounting cutout, height	141 mm
Overall depth	44 mm

#### Weights

Weight without packaging	1.07 kg
Weight incl. packaging	1.32 kg

**last modified:** 04/28/2017