

# Bussmann series CEO BS88 Offset bolted tags



## Product description

Eaton's Bussmann series range of British Standard A4 fuse links is specifically designed for the protection of general industrial applications e.g. power distribution, cable protection, motor protection.

## Standard features

- Good peak let-through current limitation
- 1:1:6 Selective coordination ratio between "minor" and "major" fuse
- Suitable for motor protection if gM type selected
- Power loss values well within the limits of IEC 60269

**Catalogue symbol:**

- CEO (Amps)

**Technical data:**

- Rated voltage: 500 V a.c. (gG) / 415 V a.c. (gM)
- Rated current: 32 to 100 A
- Breaking capacity: 80kA
- BS reference: A4
- Class of operation: gG and gM

**Standards/approvals:**

- BS88
- IEC 60269
- Suitable for use in RoHS compliant applications

**Fuse holder (ordered separately)**

- RS100H (Red Spot)

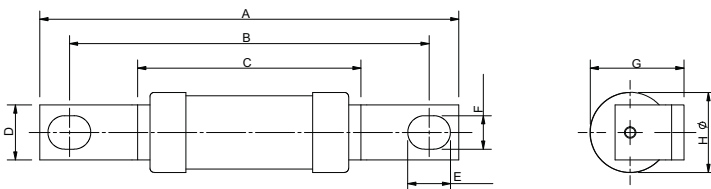
**Packaging:**

- MOQ 10

**Table 1. Technical data**

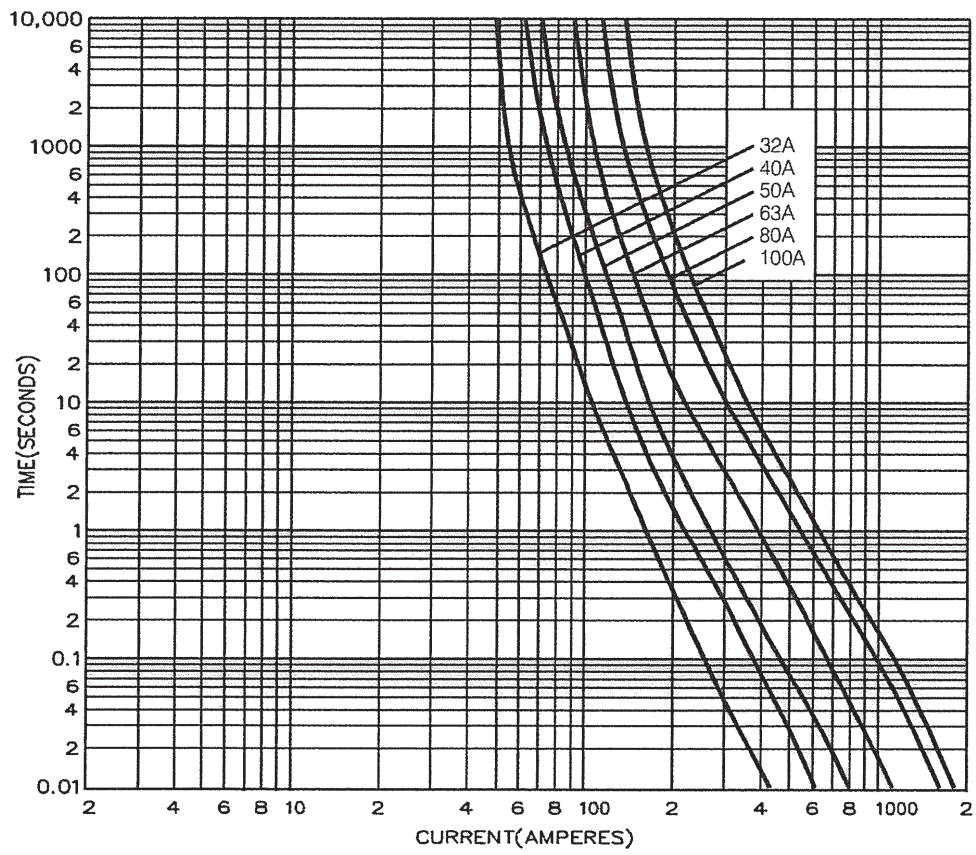
Part number	Voltage	Current rating (amps)	Energy integrals I <sup>2</sup> t (A <sup>2</sup> S)		Watts loss	Weight
			Pre-arcing	Total at 415V	W	
CEO32	500 V a.c.	32	1000	2760	3.5	75g
CEO40	500 V a.c.	40	1400	3750	4.7	75g
CEO50	500 V a.c.	50	3000	8350	4.9	75g
CEO63	500 V a.c.	63	7000	18,800	5.6	75g
CEO80	500 V a.c.	80	13,000	35,200	7.2	75g
CEO100	500 V a.c.	100	25,000	76,500	8.5	75g
CEO100M125	415 V a.c.	100M125	57,000	150,000	6.5	100g
CEO100M160	415 V a.c.	100M160	72,500	190,000	5	100g
CEO100M200	415 V a.c.	100M200	120,000	290,000	3.5	195g

**Dimensions - mm**

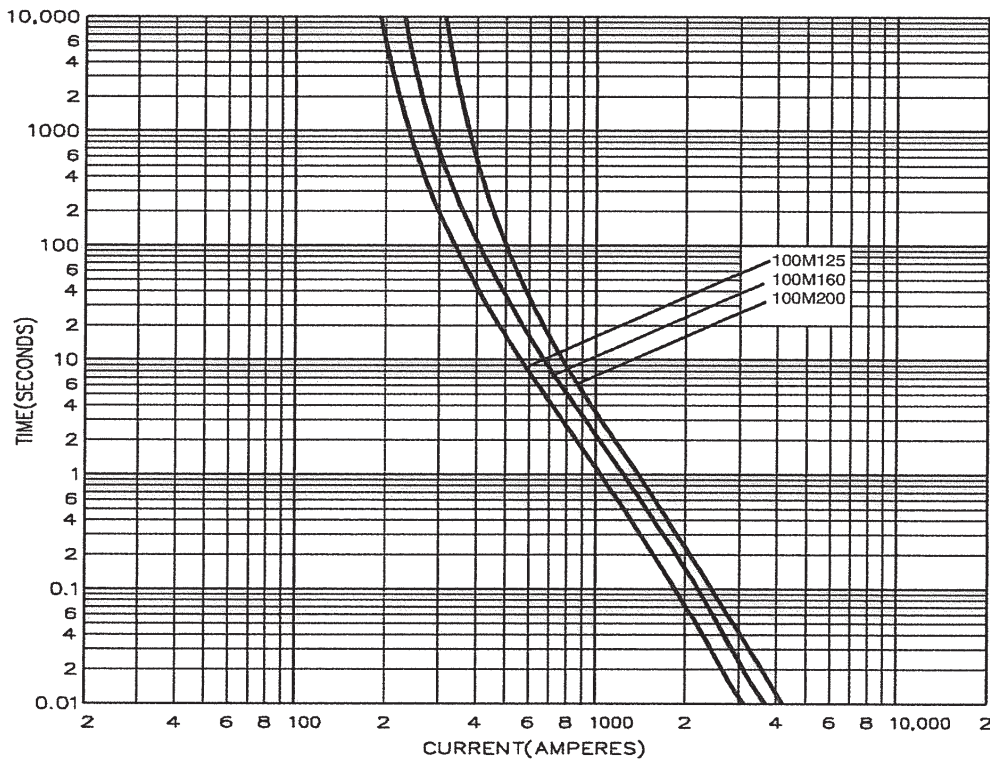


Catalogue numbers	A	B	C	D	E	F	G	H
CEO32-100	109.5	94	58.5	14.3	11	8.7	24.5	21
CEO100M125-160	109	94	58	14.3	11	8.7	26.8	25.8
CEO100M200	110	94	47	19	10	9	29.5	31

Time current curve - CEO32 to CEO100 A



**Time current curve - CEO100M**



Changes to the products, to the information contained in this document, and to prices are reserved; so are errors and omissions. Only order confirmations and technical documentation by Eaton is binding. Photos and pictures also do not warrant a specific layout or functionality. Their use in whatever form is subject to prior approval by Eaton. The same applies to Trademarks (especially Eaton, Moeller, and Cutler-Hammer). The Terms and Conditions of Eaton apply, as referenced on Eaton Internet pages and Eaton order confirmations.

**Eaton**  
 EMEA Headquarters  
 Route de la Longeraie 7  
 1110 Morges, Switzerland  
 Eaton.eu

© 2015 Eaton  
 All Rights Reserved  
 Publication No. 4115  
 July 2015