

# Compact high speed fuses — 500Vac/dc, 50-400A



**Catalog symbol:**

- CHSF-(amp)

**Description:**

Eaton's Bussmann® series compact high speed fuses feature space-saving case sizes for protecting semiconductor devices up to 500Vac/dc in ratings from 50 to 400 amps.

**Specifications:**

**Ratings**

- Volts - 500Vac/dc
- Amps – 50-400A
- Interrupting rating
  - Max AC – 200kA
  - Min AC 400%
  - Max DC – 50kA
  - Min DC 800%
- Conforms to IEC® aR specifications for short-circuit protection

**Agency information**

- UL® Recognized, File E56412, Guide JFHR2
- CSA® Component Acceptance, Class 1422-30, File 53787
- IEC aR (self certified)
- CE
- RoHS compliant
- REACH declaration available upon request

**Features:**

- Use up to 48% less enclosure space to help reduce the overall assembly size
- Innovative design allows for a significantly smaller package without compromising heat rise performance, preventing extensive equipment redesign
- Global acceptance with UL, CSA, IEC and RoHS for products sold worldwide
- Bolt-on design provides design flexibility for installation in fuse blocks or direct mounting on busbars
- Meets JASO D622 spec for thermal shock, humidity, and vibration
- Superior current cycling performance helps withstand demanding applications

**Recommended fuse blocks**

Up to 100 amps

Catalog numbers	Wire size	Stud size
BH-0111	#14-2/0 Cu	1/4-20
BH-0112	#14-2/0 Cu	5/16-18
BH-0121	(2) #14-1/0 Cu	1/4-20
BH-0122	(2) #14-1/0 Cu	5/16-18
1BS101	#14-2/0 Cu	1/4-20 x 1/2

See data sheet No. 1200 (BH-01\_) and No. 1206 (1BS101) for details.

Up to 400 amps

Catalog numbers	Wire size	Stud size
BH-1131	#6-250kcmil Cu	1/4-20
BH-1132	#6-250kcmil Cu	5/16-18
1BS102	#6-250kcmil Cu	1/4-20 x 1/2

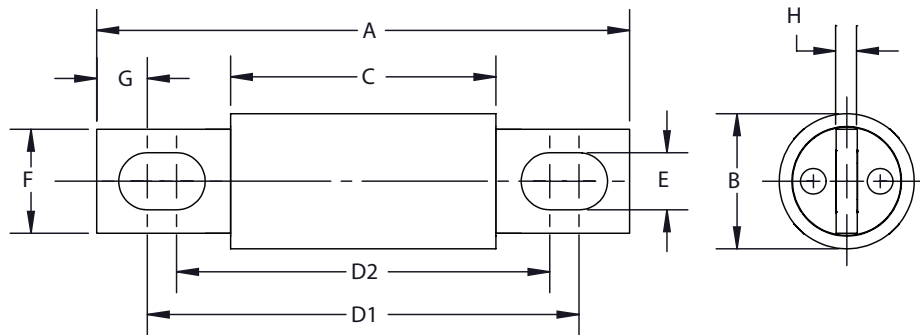
See data sheet No. 1201 (BH-11\_) and No. 1207 (1BS102) for details.

**Catalog numbers:**

Catalog number	Amps	AC/DC I <sup>2</sup> t (A <sup>2</sup> s) pre-arcing	AC* I <sup>2</sup> t (A <sup>2</sup> s) total clear	DC** I <sup>2</sup> t (A <sup>2</sup> s) total clear	Watts loss / percent of rated current	
					@ 80%	@ 50%
CHSF-50	50	304	1875	935	3.8	1.3
CHSF-60	60	438	2700	1346	4.5	1.5
CHSF-70	70	596	3675	1833	5.3	1.8
CHSF-80	80	778	4800	2394	6.1	2.0
CHSF-100	100	1216	7500	3740	7.6	2.5
CHSF-125	125	2042	12,721	6465	12.0	3.6
CHSF-150	150	2941	18,318	9309	14.3	4.3
CHSF-175	175	4003	24,933	12,671	16.7	5.1
CHSF-200	200	5228	32,566	16,550	19.1	5.8
CHSF-225	225	6835	48,028	21,278	26.1	7.0
CHSF-250	250	8438	59,293	26,270	29.0	7.8
CHSF-300	300	12,151	85,382	37,828	34.8	9.4
CHSF-350	350	16,539	116,215	51,488	40.6	10.9
CHSF-400	400	21,603	151,791	67,250	46.4	12.5

\* @ 200kA/500Vac.  
\*\* @ 50kA/500Vdc.

**Dimensions — mm:**



Case size amp range	A	B	C	D1	D2	E	F	G	H
50-100	81	20	40	61	57	8.7	16	7.7	3.2
125-200	92	25	53	77	68	8.7	19	7.8	3.2
225-400	92	30	53	74	68	8.7	25	9.0	4.8