



.....  
***Barracuda 5400.1 Family***  
.....

***ST340015A***  
.....

.....  
***Ultra ATA Interface Drives***  
.....

***Product Manual***  
.....



.....  
***Barracuda 5400.1 Family***  
.....

***ST340015A***  
.....  
.....

.....  
***Ultra ATA Interface Drives***  
.....

***Product Manual***  
.....

© 2003 Seagate Technology LLC All rights reserved  
Publication number: 100256411, Rev. F  
December 2003

Seagate, Seagate Technology, and the Seagate logo are either registered trademarks or trademarks of Seagate Technology LLC. Barracuda, DiscWizard, SeaFONE, SeaShell, SeaShield, SeaTDD, and 3D Defense System are either registered trademarks or trademarks of Seagate Technology LLC. Other product names are registered trademarks or trademarks of their owners.

Seagate reserves the right to change, without notice, product offerings or specifications. No part of this publication may be reproduced in any form without written permission of Seagate Technology LLC.

# Contents

<b>1.0</b>	<b>Introduction</b> .....	<b>1</b>
<b>2.0</b>	<b>Drive specifications</b> .....	<b>3</b>
2.1	Specification summary table .....	3
2.2	Formatted capacity .....	6
2.3	Default logical geometry .....	6
2.4	Physical organization .....	6
2.5	Recording and interface technology .....	7
2.6	Physical characteristics .....	7
2.7	Seek time .....	8
2.8	Start/stop times .....	8
2.9	Power specifications .....	8
2.9.1	Power consumption .....	9
2.9.2	Conducted noise .....	12
2.9.3	Voltage tolerance .....	12
2.9.4	Power-management modes .....	12
2.10	Environmental specifications .....	13
2.10.1	Ambient temperature .....	13
2.10.2	Temperature gradient .....	14
2.10.3	Humidity .....	14
2.10.4	Altitude .....	14
2.10.5	Shock .....	15
2.10.6	Vibration .....	15
2.11	Acoustics .....	16
2.12	Electromagnetic immunity .....	17
2.13	Reliability .....	17
2.14	Agency certification .....	18
2.14.1	Safety certification .....	18
2.14.2	Electromagnetic compatibility .....	18
2.14.3	FCC verification .....	19
<b>3.0</b>	<b>Configuring and mounting the drive</b> .....	<b>21</b>
3.1	Handling and static discharge precautions .....	21
3.2	Breather filter hole precautions .....	22
3.3	Jumper settings .....	23
3.3.1	Master/slave configuration .....	23
3.3.2	Cable select option .....	23
3.3.3	Ultra ATA/100 cable .....	24
3.4	Drive mounting .....	24
<b>4.0</b>	<b>ATA interface</b> .....	<b>27</b>
4.1	ATA interface signals and connector pins .....	27

- 4.1.1 Supported ATA commands . . . . .29
- 4.1.2 Identify Device command . . . . .31
- 4.1.3 Set Features command. . . . .36
- 4.1.4 S.M.A.R.T. commands . . . . .38
- 5.0 Seagate Technology support services . . . . .39**

## List of Figures

Figure 1.	Typical 5V startup and operation current profile . . . . .	11
Figure 2.	Typical 12V startup and operation current profile . . . . .	11
Figure 3.	Breather filter hole location . . . . .	22
Figure 4.	Master/slave jumper settings . . . . .	23
Figure 5.	Ultra ATA cable connectors . . . . .	24
Figure 6.	Mounting dimensions—top, side and end view. . . . .	25
Figure 7.	I/O pins and supported ATA signals . . . . .	28





## 1.0 Introduction

This manual describes the functional, mechanical and interface specifications for Seagate® Barracuda® 5400.1 ST340015A model drives. This drive provides the following key features:

- Low power consumption.
- High instantaneous (burst) data transfer rates (up to 100 Mbytes per second) using Ultra DMA mode 5.
- Giant magnetoresistive (GMR) recording heads and EPRML technology provide the drives with increased areal density.
- State-of-the-art cache and on-the-fly error-correction algorithms.
- Full-track multiple-sector transfer capability without local processor intervention.
- Quiet operation.
- 350 Gs nonoperating shock.
- SeaTools diagnostic software performs a drive self-test that eliminates unnecessary drive returns.
- Support for S.M.A.R.T. drive monitoring and reporting.
- Support for drive self-test (DST) with S.M.A.R.T. Execute Off-Line Immediate.
- Support for Read Multiple and Write Multiple commands.
- Support for autodetection of master/slave drives that use cable select (CSEL).



## 2.0 Drive specifications

Unless otherwise noted, all specifications are measured under ambient conditions, at 25°C, and nominal power. For convenience, the phrases *the drive* and *this drive* are used throughout this manual to indicate ST340015A model drives.

### 2.1 Specification summary table

The specifications listed in this table are for quick reference. For details on specification measurement or definition, see the appropriate section of this manual.

<b>Drive specification</b>	<b>ST340015A</b>
Formatted Gbytes (x10 <sup>6</sup> bytes)	40
Guaranteed sectors	78,165,360
Bytes per sector	512
Default sectors per track	63
Default read/write heads	16
Default cylinders	16,383
Physical read/write heads	1
Discs	1
Recording density BPI (bits/inch max)	475,127
Track density TPI (tracks/inch max)	94,000
Areal density (Mbits/inch <sup>2</sup> max)	49,888
Spindle speed (RPM)	5,800
Internal data transfer rate (Mbits/sec)	511
I/O data transfer rate (Mbytes/sec max)	100
ATA data-transfer modes supported	PIO modes 0–4 Multiword DMA modes 0–2 Ultra DMA modes 0–5
Cache buffer (Mbytes)	2
Height (mm max)	19.99
Width (mm max)	102
Length (mm max)	146.9
Weight (typical)	454 grams (1.1 lb)
Average seek time (msec typical)	12.5 (read); 13.5 (write)
Track-to-track seek time (msec typical)	0.3 (read); 0.7 (write)
Read/write seek time (msec typical)	15.5 (read); 16.5 (write)
Full-stroke seek time (msec typical)	26 (read); 28 (write)
Power-on to ready (max)	6.5 seconds
Standby to ready (typical)	6.0 seconds
Spindown (typical)	10 seconds
Startup current (max)	1.20 amps (5V); 2.0 amps (12V)
Seek power (typical)	7.3 watts
Read/Write power	6.6 watts

Drive specification	ST340015A
Idle mode (typical)	5.0 watts
Standby mode (typical)	1.4 watts
Sleep mode (typical)	1.0 watts
Voltage tolerance (including noise)	5V +/- 5%; 12V +/- 10%
Ambient temperature	0° to 60°C (operating) -40° to 70°C (nonoperating)
Temperature gradient (°C per hour max)	20°C (operating)
Relative humidity	5% to 90% (operating) 5% to 95% (nonoperating)
Relative humidity gradient	30% per hour max
Wet bulb temperature (°C max)	33 (operating) 40.0 (nonoperating)
Altitude, operating	-60.96 m to 3,048 m (-200 ft to 10,000+ ft)
Altitude, nonoperating (below mean sea level, max)	-60.96 m to 12,192 m (-200 ft to 40,000+ ft)
Shock, operating (Gs max at 2 msec)	63
Shock, nonoperating (Gs max at 1 and 2 msec)	350
Vibration, operating	0.5 Gs (0 to peak, 22–350 Hz)
Vibration, nonoperating	5 Gs (0 to peak, 22–350 Hz)
Drive acoustics Sound power (bels)	
	Idle* 2.6 (typical), 2.8 (max) Quiet Seek 2.7 (typical), 2.9 (max) Performance Seek 2.8 (typical), 3.0 (max)
Nonrecoverable read errors	1 per 10 <sup>14</sup> bits read
Mean time between failures (power-on hours)	600,000
Service life	5 years
Contact start-stop cycles (25°C, 40% relative humidity)	50,000
SeaShield	No

\*During periods of drive idle, some offline activity may occur according to the S.M.A.R.T. specification, which may increase acoustic and power to operational levels.

## 2.2 Formatted capacity

Model	Formatted capacity	Guaranteed sectors	Bytes per sector
ST340015A	40 Gbytes	78,165,360	512

## 2.3 Default logical geometry

Cylinders	Read/write heads	Sectors per track
16,383	16	63

### LBA mode

When addressing these drives in LBA mode, all blocks (sectors) are consecutively numbered from 0 to  $n-1$ , where  $n$  is the number of guaranteed sectors as defined above.

## 2.4 Physical organization

Drive Model	Read/write heads	Number of discs
ST340015A	1	1

## 2.5 Recording and interface technology

Interface	ATA
Recording method	GPRML detector with NPML post processor
Recording density BPI (bits/inch max)	475,127
Track density TPI (tracks/inch max)	94,000
Areal density (Mbits/inch <sup>2</sup> max)	49,888
Spindle speed (RPM) ( $\pm 0.2\%$ )	5,800
Internal data transfer rate (Mbits/sec)	511
I/O data transfer rate (Mbytes/sec max)	16.6 (PIO mode 4) 100 (Ultra DMA mode 5)
Interleave	1:1
Cache buffer	2 Mbytes (2,048 kbytes)

## 2.6 Physical characteristics

Drive specification	ST340015A
Maximum height (mm) (inches)	19.99 0.783
Maximum width (mm) (inches)	102 4.02
Maximum length (mm) (inches)	146.9 5.78
Typical weight (grams) (pounds)	454 1.1

## 2.7 Seek time

Seek measurements are taken with nominal power at 25°C ambient temperature. All times are measured using drive diagnostics. The specifications in the table below are defined as follows:

- Track-to-track seek time is an average of all possible single-track seeks in both directions.
- Average seek time is a true statistical random average of at least 5,000 measurements of seeks between random tracks, less overhead.

Typical seek times (msec)	Read	Write
Average	12.5	13.5
Track-to-track	0.3	0.7
Read/write	15.5	16.5
Full stroke	26	28

**Note.** These drives are designed to consistently meet the seek times represented in this manual. Physical seeks, regardless of mode (such as track-to-track and average), are expected to meet or exceed the noted values. However, due to the manner in which these drives are formatted, benchmark tests that include command overhead or measure logical seeks may produce results that vary from these specifications.

## 2.8 Start/stop times

Power-on to Ready (sec)	6.5 (max)
Standby to Ready (sec)	6.0 (typical)
Ready to spindle stop (sec)	10 (typical)

## 2.9 Power specifications

The drive receives DC power (+5V or +12V) through a four-pin standard drive power connector.



### 2.9.1 Power consumption

Power requirements for the drives are listed in the table on page 10. Typical power measurements are based on an average of drives tested, under nominal conditions, using 5.0V and 12.0V input voltage at 25°C ambient temperature.

- **Spinup power**

Spinup power is measured from the time of power-on to the time that the drive spindle reaches operating speed.

- **Seek mode**

During seek mode, the read/write actuator arm moves toward a specific position on the disc surface and does not execute a read or write operation. Servo electronics are active. Seek mode power represents the worst-case power consumption, using only random seeks with read or write latency time. This mode is not typical and is provided for worst-case information.

- **Read/write power and current**

Read/write power is measured with the heads on track, based on a 16-sector write followed by a 32-msec delay, then a 16-sector read followed by a 32-msec delay.

- **Operating power and current**

Operating power is measured using 40 percent random seeks, 40 percent read/write mode (1 write for each 10 reads) and 20 percent drive idle mode.

- **Idle mode power**

Idle mode power is measured with the drive up to speed, with servo electronics active and with the heads in a random track location.

- **Standby mode**

During Standby mode, the drive accepts commands, but the drive is not spinning, and the servo and read/write electronics are in power-down mode.

<b>Power dissipation (watts)</b>	<b>Average (watts, 25° C)</b>	<b>5V typ amps</b>	<b>12V typ amps</b>
Spinup	—	1.20 (max)	2.0 (max)
Idle	5.0	0.46	0.23
Idle* (with offline activity)	8.2	1.11	0.22
Operating 40% r/w, 40% seek, 20% inop.	6.6	0.59	0.30
Seeking	7.3	0.47	0.39
Standby	1.4	0.24	0.02
Sleep	1.0	0.16	0.02

\*During periods of drive idle, some offline activity may occur according to the S.M.A.R.T. specification, which may increase acoustic and power to operational levels.

### 2.9.1.1 Typical current profile

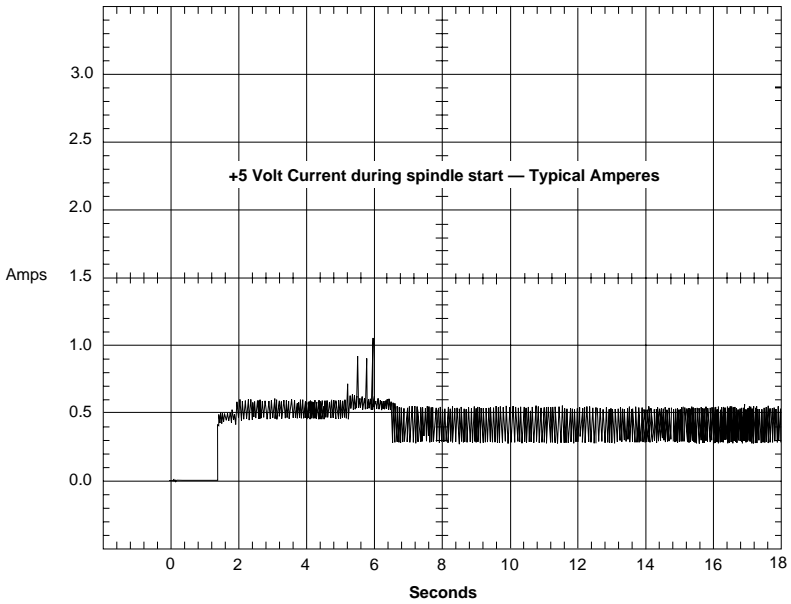


Figure 1. Typical 5V startup and operation current profile

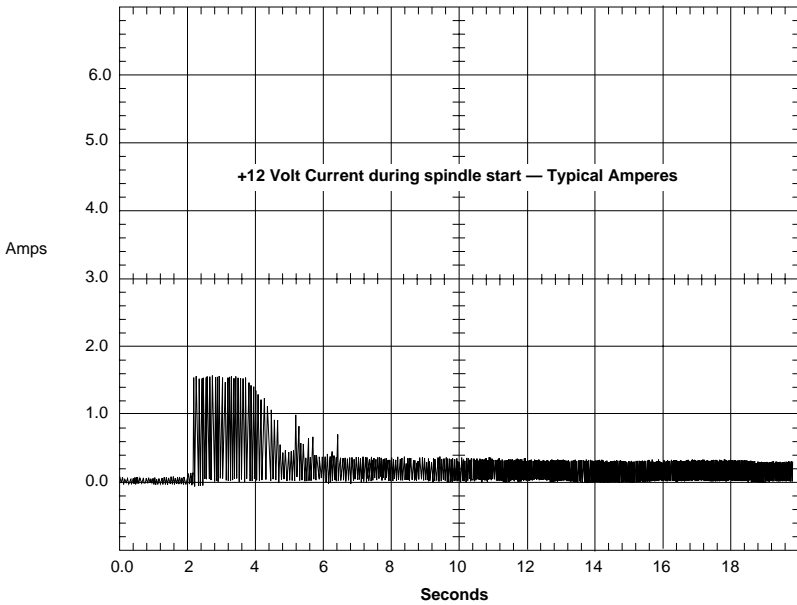


Figure 2. Typical 12V startup and operation current profile

### 2.9.2 Conducted noise

Input noise ripple is measured at the host system power supply across an equivalent 80-ohm resistive load on the +12 volt line or an equivalent 15-ohm resistive load on the +5 volt line.

- Using 12-volt power, the drive is expected to operate with a maximum of 120 mV peak-to-peak square-wave injected noise at up to 10 MHz.
- Using 5-volt power, the drive is expected to operate with a maximum of 100 mV peak-to-peak square-wave injected noise at up to 10 MHz.

**Note.** Equivalent resistance is calculated by dividing the nominal voltage by the typical RMS read/write current.

### 2.9.3 Voltage tolerance

Voltage tolerance (including noise):

5V  $\pm$  5%

12V  $\pm$  10%

### 2.9.4 Power-management modes

The drive provides programmable power management to provide greater energy efficiency. In most systems, you can control power management through the system setup program. The drive features the following power-management modes:

Power modes	Heads	Spindle	Buffer
Active	Tracking	Rotating	Enabled
Idle	Tracking	Rotating	Enabled
Standby	Parked	Stopped	Enabled
Sleep	Parked	Stopped	Disabled

- **Active mode**

The drive is in Active mode during the read/write and seek operations.

- **Idle mode**

The buffer remains enabled, and the drive accepts all commands and returns to Active mode any time disc access is necessary.

- **Standby mode**

The drive enters Standby mode when the host sends a Standby Immediate command. If the host has set the standby timer, the drive can also enter

Standby mode automatically after the drive has been inactive for a specifiable length of time. The standby timer delay is established using a Standby or Idle command. In Standby mode, the drive buffer is enabled, the heads are parked and the spindle is at rest. The drive accepts all commands and returns to Active mode any time disc access is necessary.

- **Sleep mode**

The drive enters Sleep mode after receiving a Sleep command from the host. In Sleep mode, the drive buffer is disabled, the heads are parked and the spindle is at rest. The drive leaves Sleep mode after it receives a Hard Reset or Soft Reset from the host. After receiving a reset, the drive exits Sleep mode and enters Standby mode with all current translation parameters intact.

- **Idle and Standby timers**

Each time the drive performs an Active function (read, write or seek), the standby timer is reinitialized and begins counting down from its specified delay times to zero. If the standby timer reaches zero before any drive activity is required, the drive makes a transition to Standby mode. In both Idle and Standby mode, the drive accepts all commands and returns to Active mode when disc access is necessary.

## **2.10 Environmental specifications**

### **2.10.1 Ambient temperature**

Ambient temperature is defined as the temperature of the environment immediately surrounding the drive. Actual drive case temperature should not exceed 69°C (156°F) within the operating ambient conditions.

Above 1,000 feet (305 meters), the maximum temperature is derated linearly to 112°F (44°C) at 10,000 feet (3,048 meters).

Operating:                    0° to 60°C (32° to 140°F)

Nonoperating:                -40° to 70°C (-40° to 158°F)

## **2.10.2 Temperature gradient**

Operating: 20°C per hour (68°F per hour max), without condensation

Nonoperating: 30°C per hour (86°F per hour max)

## **2.10.3 Humidity**

### **2.10.3.1 Relative humidity**

Operating: 5% to 90% noncondensing (30% per hour max)

Nonoperating: 5% to 95% noncondensing (30% per hour max)

### **2.10.3.2 Wet bulb temperature**

Operating: 33°C (91.4°F max)

Nonoperating: 40.0°C (104°F max)

## **2.10.4 Altitude**

Operating: -60.96 m to 3,048 m (-200 ft to 10,000+ ft)

Nonoperating: -60.96 m to 12,192 m (-200 ft to 40,000+ ft)

## **2.10.5 Shock**

All shock specifications assume that the drive is mounted securely with the input shock applied at the drive mounting screws. Shock may be applied in the X, Y or Z axis.

### **2.10.5.1 Operating shock**

These drives comply with the performance levels specified in this document when subjected to a maximum operating shock of 63 Gs based on half-sine shock pulses of 2 msec. Shocks should not be repeated more than two times per second.

### **2.10.5.2 Nonoperating shock**

The nonoperating shock level that the drive can experience without incurring physical damage or degradation in performance when subsequently put into operation is 350 Gs based on a nonrepetitive half-sine shock pulse of 2 msec duration.

## **2.10.6 Vibration**

All vibration specifications assume that the drive is mounted securely with the input vibration applied at the drive mounting screws. Vibration may be applied in the X, Y or Z axis.

### **2.10.6.1 Operating vibration**

The following table lists the maximum vibration levels that the drive may experience while meeting the performance standards specified in this document.

5–21 Hz	0.02-inch displacement (peak to peak)
22–350 Hz	0.50 Gs acceleration (zero to peak)

### **2.10.6.2 Nonoperating vibration**

The following table lists the maximum nonoperating vibration that the drive may experience without incurring physical damage or degradation in performance when subsequently put into operation.

5–21 Hz	0.2-inch displacement (peak to peak)
22–350 Hz	5.0 Gs acceleration (zero to peak)

## 2.11 Acoustics

Drive acoustics are measured as overall A-weighted acoustic sound power levels (no pure tones). All measurements are consistent with ISO document 7779. Sound power measurements are taken under essentially free-field conditions over a reflecting plane. For all tests, the drive is oriented with the cover facing upward.

**Note.** For seek mode tests, the drive is placed in seek mode only. The number of seeks per second is defined by the following equation:

$$(\text{Number of seeks per second} = 0.4 / (\text{average latency} + \text{average access time}))$$

**Table 1: Fluid Dynamic Bearing (FDB) motor acoustics**

Model	Acoustic mode		
	Idle*	Quiet seek	Performance seek
ST340015A	2.6 bels (typ)	2.7 bels (typ)	2.8 bels (typ)
	2.8 bels (max)	2.9 bels (max)	3.0 bels (max)

\*During periods of drive idle, some offline activity may occur according to the S.M.A.R.T. specification, which may increase acoustic and power to operational levels.



## 2.12 Electromagnetic immunity

When properly installed in a representative host system, the drive operates without errors or degradation in performance when subjected to the radio frequency (RF) environments defined in the following table:

Test	Description	Performance level	Reference standard
Electrostatic discharge	Contact, HCP, VCP: $\pm 4$ kV; Air: $\pm 8$ kV	B	EN 61000-4-2: 95
Radiated RF immunity	80 to 1,000 MHz, 3 V/m, 80% AM with 1 kHz sine 900 MHz, 3 V/m, 50% pulse modulation @ 200 Hz	A	EN 61000-4-3: 96 ENV 50204: 95
Electrical fast transient	$\pm 1$ kV on AC mains, $\pm 0.5$ kV on external I/O	B	EN 61000-4-4: 95
Surge immunity	$\pm 1$ kV differential, $\pm 2$ kV common, AC mains	B	EN 61000-4-5: 95
Conducted RF immunity	150 kHz to 80 MHz, 3 Vrms, 80% AM with 1 kHz sine	A	EN 61000-4-6: 97
Voltage dips, interrupts	0% open, 5 seconds 0% short, 5 seconds 40%, 0.10 seconds 70%, 0.01 seconds	C C C B	EN 61000-4-11: 94

## 2.13 Reliability

Nonrecoverable read errors	1 per $10^{14}$ bits read, max.
Mean time between failures	600,000 power-on hours . (nominal power, 25°C ambient temperature)
Service life	The drive shall have a useful service life of five years.
Contact start-stop cycles	50,000 cycles. (at nominal voltage and temperature, with 60 cycles per hour and a 50% duty cycle)
Preventive maintenance	None required.

## **2.14 Agency certification**

### **2.14.1 Safety certification**

The drives are recognized in accordance with UL 1950 and CSA C22.2 (950) and meet all applicable sections of IEC950 and EN 60950 as tested by TUV North America.

### **2.14.2 Electromagnetic compatibility**

Hard drives that display the CE mark comply with the European Union (EU) requirements specified in the Electromagnetic Compatibility Directive (89/336/EEC). Testing is performed to the levels specified by the product standards for Information Technology Equipment (ITE). Emission levels are defined by EN 55022, Class B and the immunity levels are defined by EN 55024.

Seagate uses an independent laboratory to confirm compliance with the EC directives specified in the previous paragraph. Drives are tested in representative end-user systems. Although CE-marked Seagate drives comply with the directives when used in the test systems, we cannot guarantee that all systems will comply with the directives. The drive is designed for operation inside a properly designed enclosure, with properly shielded I/O cable (if necessary) and terminators on all unused I/O ports. Computer manufacturers and system integrators should confirm EMC compliance and provide CE marking for their products.

### **Korean RRL**

If these drives have the Korea Ministry of Information and Communication (MIC) logo, they comply with paragraph 1 of Article 11 of the Electromagnetic Compatibility control Regulation and meet the Electromagnetic Compatibility (EMC) Framework requirements of the Radio Research Laboratory (RRL) Ministry of Information and Communication Republic of Korea.

These drives have been tested and comply with the Electromagnetic Interference/Electromagnetic Susceptibility (EMI/EMS) for Class B products. Drives are tested in a representative, end-user system by a Korean-recognized lab.

- EUT name (model numbers): ST340015A
- Certificate number: E-H011-02-4735 (B)
- Trade name or applicant: Seagate Technology
- Manufacturing date: January 2003
- Manufacturer/nationality: Singapore and China

## Australian C-Tick (N176)

If these models have the C-Tick marking, they comply with the Australia/New Zealand Standard AS/NZS3548 1995 and meet the Electromagnetic Compatibility (EMC) Framework requirements of the Australian Communication Authority (ACA).

### 2.14.3 FCC verification

These drives are intended to be contained solely within a personal computer or similar enclosure (not attached as an external device). As such, each drive is considered to be a subassembly even when it is individually marketed to the customer. As a subassembly, no Federal Communications Commission verification or certification of the device is required.

Seagate Technology LLC has tested this device in enclosures as described above to ensure that the total assembly (enclosure, disc drive, motherboard, power supply, etc.) does comply with the limits for a Class B computing device, pursuant to Subpart J, Part 15 of the FCC rules. Operation with noncertified assemblies is likely to result in interference to radio and television reception.

**Radio and television interference.** This equipment generates and uses radio frequency energy and if not installed and used in strict accordance with the manufacturer's instructions, may cause interference to radio and television reception.

This equipment is designed to provide reasonable protection against such interference in a residential installation. However, there is no guarantee that interference will not occur in a particular installation. If this equipment does cause interference to radio or television, which can be determined by turning the equipment on and off, you are encouraged to try one or more of the following corrective measures:

- Reorient the receiving antenna.
- Move the device to one side or the other of the radio or TV.
- Move the device farther away from the radio or TV.
- Plug the computer into a different outlet so that the receiver and computer are on different branch outlets.

If necessary, you should consult your dealer or an experienced radio/television technician for additional suggestions. You may find helpful the following booklet prepared by the Federal Communications Commission: *How to Identify and Resolve Radio-Television Interference Problems*. This booklet is available from the Superintendent of Documents, U.S. Government Printing Office, Washington, DC 20402. Refer to publication number 004-000-00345-4.



## 3.0 Configuring and mounting the drive

This section contains the specifications and instructions for configuring and mounting the drive.

### 3.1 Handling and static discharge precautions

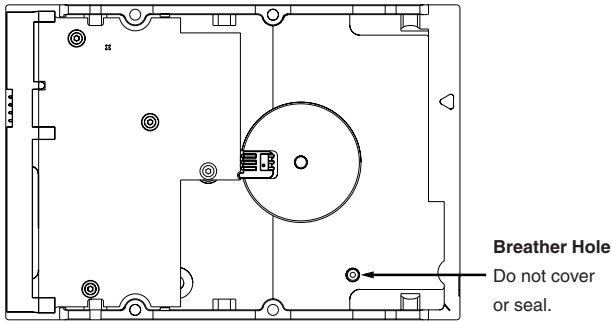
After unpacking, and before installation, the drive may be exposed to potential handling and electrostatic discharge (ESD) hazards. Observe the following standard handling and static-discharge precautions:

#### Caution:

- The SeaShell™ replaces electrostatic discharge (ESD) bags. The SeaShell package is a shock-ribbed, transparent clamshell enclosure that limits a drive's exposure to ESD and also protects against external shocks and stresses. The design permits attaching cables, software loading and label/barcode scanning without removing the drive from the SeaShell. This minimizes handling damage. Keep the drive in the SeaShell package until you are ready for installation.
- Before handling the drive, put on a grounded wrist strap, or ground yourself frequently by touching the metal chassis of a computer that is plugged into a grounded outlet. Wear a grounded wrist strap throughout the entire installation procedure.
- Handle the drive by its edges or frame *only*.
- The drive is extremely fragile—handle it with care. Do not press down on the drive top cover.
- Always rest the drive on a padded, antistatic surface until you mount it in the computer.
- Do not touch the connector pins or the printed circuit board.
- Do not remove the factory-installed labels from the drive or cover them with additional labels. Removal voids the warranty. Some factory-installed labels contain information needed to service the drive. Other labels are used to seal out dirt and contamination.

### 3.2 Breather filter hole precautions

This section contains information regarding the precautions which should be taken regarding the breather filter hole in Seagate hard disc drives. Proper precautions should be taken to ensure full functionality and prevent possible damage to the drive.



**Figure 3. Breather filter hole location**

Caution: Do not cover, seal, or insert any object into this hole.

This hole has two purposes:

- To allow condensation inside the hard disc to escape
- To allow air pressure inside the hard disc to equalize with ambient pressure

If this hole is covered, sealed, or penetrated by any object, the drive reliability may be compromised and could lead to permanent damage—doing so voids the warranty.

### 3.3 Jumper settings

#### 3.3.1 Master/slave configuration

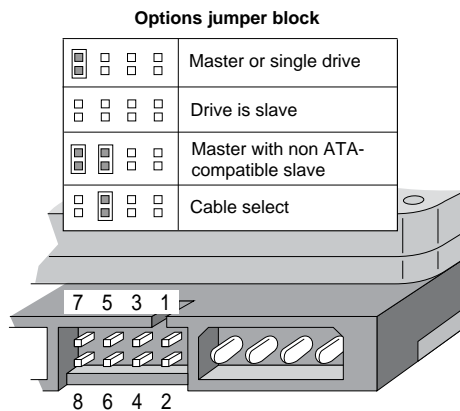
The options jumper block shown in Figure 4 is used to configure the drive for operation. It is the 8-pin dual header between the interface connector and the power connector. Use the following settings to configure the drive as a master or a slave.

**Master or single drive.** The drive is configured at the factory for a master or single-drive operation with a jumper set on pins 7 and 8.

**Drive as slave.** Remove all jumpers.

**Drive as master with a non-ATA-compatible slave.**

Set a jumper on pins 5 and 6 and another jumper on pins 7 and 8. Use this jumper setting *only* if the drive does not work as a master with no jumpers installed.



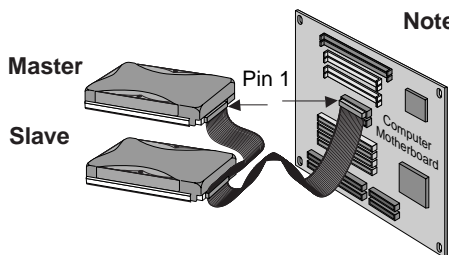
**Figure 4. Master/slave jumper settings**

#### 3.3.2 Cable select option

Computers that use cable select determine the master and slave drives by selecting or deselecting pin 28, CSEL, on the interface bus. Master and slave drives are determined by their physical position on the cable. To enable cable select, set a jumper on pins 5 and 6 as shown in Figure 4. Refer to your computer manual to determine whether your computer supports this option.

### 3.3.3 Ultra ATA/100 cable

An 80-conductor 40-pin cable is required to run Ultra DMA mode 3, mode 4 and mode 5. This cable uses even-numbered conductors connected to the ground pins to improve signal integrity.



**Note.** If you are using a 40-pin 80-conductor cable, attach the *blue* connector to the motherboard, the *black* connector to the master drive, and the *grey* connector to the slave.

**Figure 5. Ultra ATA cable connectors**

**Note.** The drive supports both host and drive cable detection. The host detects the 80-conductor cable by sampling pin 34, CBLID-, on the interface bus. The drive detects the 80-conductor cable by sensing a capacitor at the host side through the CBLID- signal. The result is reported in a Fast Rise Detected bit (bit 13 of word 93 in the Identify drive parameter block).

### 3.4 Drive mounting

You can mount the drive in any orientation using four screws in the side-mounting holes or four screws in the bottom-mounting holes. See Figure 6 for drive mounting dimensions. Follow these important mounting precautions when mounting the drive:

- Allow a minimum clearance of 0.030 inches (0.76 mm) around the entire perimeter of the drive for cooling.
- Use only 6-32 UNC mounting screws.
- Use only .045" +/- .005 high by .050" diameter bosses (4x) for bottom mounting applications to prevent deformation of the SeaShield.
- Do not overtighten the mounting screws (maximum torque: 6 inch-lb).
- Do not use a drive interface cable that is more than 18 inches long.



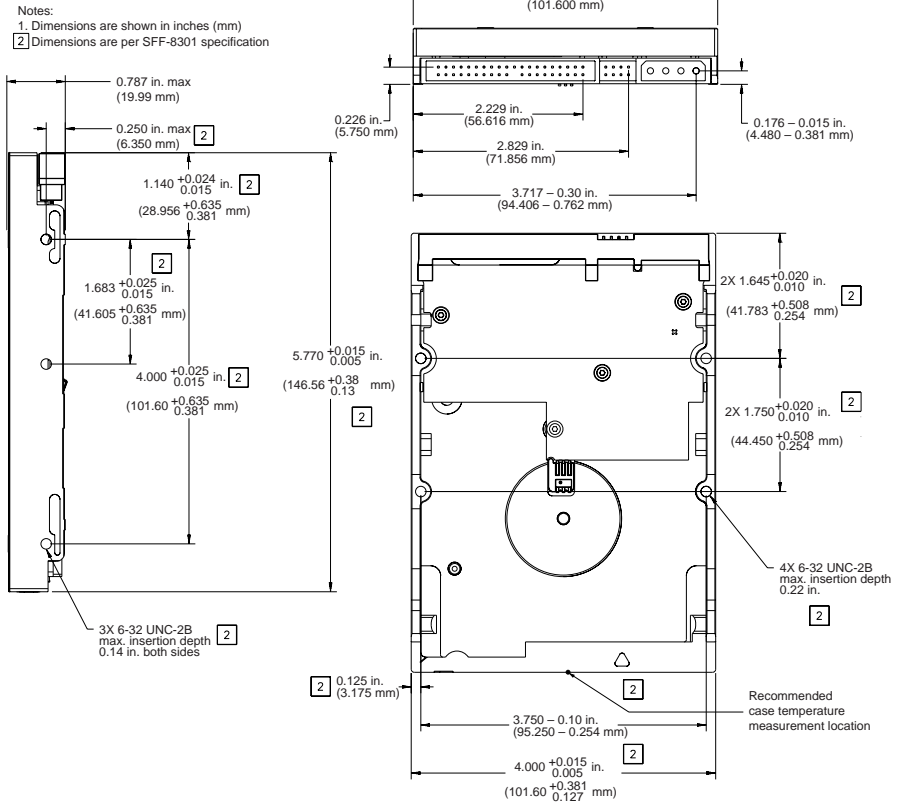


Figure 6. Mounting dimensions—top, side and end view



## 4.0 ATA interface

These drives use the industry-standard ATA task file interface that supports 16-bit data transfers. It supports ATA programmed input/output (PIO) modes 0–4; multiword DMA modes 0–2, and Ultra DMA modes 0–5. The drive also supports the use of the IORDY signal to provide reliable high-speed data transfers.

You can use a daisy-chain cable to connect two drives to a single AT host bus. For detailed information about the ATA interface, refer to the draft of *AT Attachment with Packet Interface Extension (ATA/ATAPI-7)*, *NCITS T13*, subsequently referred to as the *Draft ATA-7 Standard*.

### 4.1 ATA interface signals and connector pins

Figure 7 on page 28 summarizes the signals on the ATA interface connector that the drive supports. For a detailed description of these signals, refer to the *Draft ATA-7 Standard*.

Drive pin #	Signal name	Host pin # and signal description
1	Reset	1 Hardware Reset
2	Ground	2 Ground
3	DD7	3 Host Data Bus Bit 7
4	DD8	4 Host Data Bus Bit 8
5	DD6	5 Host Data Bus Bit 6
6	DD9	6 Host Data Bus Bit 9
7	DD5	7 Host Data Bus Bit 5
8	DD10	8 Host Data Bus Bit 10
9	DD4	9 Host Data Bus Bit 4
10	DD11	10 Host Data Bus Bit 11
11	DD3	11 Host Data Bus Bit 3
12	DD12	12 Host Data Bus Bit 12
13	DD2	13 Host Data Bus Bit 2
14	DD13	14 Host Data Bus Bit 13
15	DD1	15 Host Data Bus Bit 1
16	DD14	16 Host Data Bus Bit 14
17	DD0	17 Host Data Bus Bit 0
18	DD15	18 Device Data (15:0)
19	Ground	19 Ground
20	(removed)	20 (No Pin)
21	DMARQ	21 DMA Request
22	Ground	22 Ground
23	DLOW	23 Device I/O Write: Stop Ultra DMA Burst
24	Ground	24 Ground
25	DIOR	25 Device I/O Read: Host Ultra DMA Ready: Host Ultra DMA Data Strobe
26	Ground	26 Ground
27	IORDY	27 I/O Channel Ready
	DDMARDY	Device Ultra DMA Ready
	DSTROBE	Device Ultra DMA Data Strobe
28	CSEL	28 Cable Select
29	DMACK	29 DMA Acknowledge
30	Ground	30 Ground
31	INTRQ	31 Device Interrupt
32	IOCS16	32 Reserved
33	DA1	33 Host Address Bus Bit 1
34	PDIAG	34 Passed Diagnostics
	CBLID	Cable Assembly Type Identifier
35	DA0	35 Device Address (2:0)
36	DA2	36 Device Address (2:0)
37	CS0	37 Chip Select (1:0)
38	CS1	38 Chip Select (1:0)
39	DASP	39 Drive Active/Slave Present
40	Ground	40 Ground

Pins 28, 34 and 39 are used for master-slave communication (details shown below).

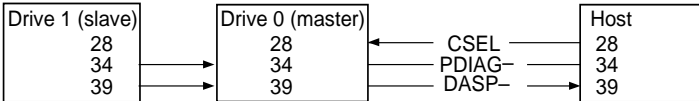


Figure 7. I/O pins and supported ATA signals

### 4.1.1 Supported ATA commands

The following table lists ATA-standard commands that the drive supports. Barracuda 5400.1 drives support ATA-7 specifications. For a detailed description of the ATA commands, refer to the *Draft ATA-7 Standard*. See “S.M.A.R.T. commands” on page 38 for details and subcommands used in the S.M.A.R.T. implementation.

Command name	Command code (in hex)
<b>ATA-standard commands</b>	
Download Microcode	92 <sub>H</sub>
Execute Device Diagnostics	90 <sub>H</sub>
Flush Cache	E7 <sub>H</sub>
Format Track	50 <sub>H</sub>
Identify Device	EC <sub>H</sub>
Initialize Device Parameters	91 <sub>H</sub>
Read Buffer	E4 <sub>H</sub>
Read DMA	C8 <sub>H</sub> , C9 <sub>H</sub>
Read Multiple	C4 <sub>H</sub>
Read Native MAX Address	F8 <sub>H</sub>
Read Sectors	20 <sub>H</sub> , 21 <sub>H</sub>
Read Verify Sectors	40 <sub>H</sub> , 41 <sub>H</sub>
Recalibrate	10 <sub>H</sub>
Seek	70 <sub>H</sub>
Set Drive Parameters	91 <sub>H</sub>
Set Features	EF <sub>H</sub>
Set MAX Address	F9 <sub>H</sub>
Set Multiple Mode	C6 <sub>H</sub>
S.M.A.R.T.	B0 <sub>H</sub>
Vendor Unique	9A <sub>H</sub> , FA <sub>H</sub> , FB <sub>H</sub>

Command name	Command code (in hex)
Write Buffer	E8 <sub>H</sub>
Write DMA	CA <sub>H</sub> , CB <sub>H</sub>
Write Multiple	C5 <sub>H</sub>
Write Sectors	30 <sub>H</sub> , 31 <sub>H</sub>

Command name	Command code (in hex)
<b>ATA-standard power-management commands</b>	
Check Power Mode	98 <sub>H</sub> or E5 <sub>H</sub>
Idle	97 <sub>H</sub> or E3 <sub>H</sub>
Idle Immediate	95 <sub>H</sub> or E1 <sub>H</sub>
Sleep	99 <sub>H</sub> or E6 <sub>H</sub>
Standby	96 <sub>H</sub> or E2 <sub>H</sub>
Standby Immediate	94 <sub>H</sub> or E0 <sub>H</sub>
<b>ATA-standard security commands</b>	
Security Set Password	F1 <sub>H</sub>
Security Unlock	F2 <sub>H</sub>
Security Erase Prepare	F3 <sub>H</sub>
Security Erase Unit	F4 <sub>H</sub>
Security Freeze Lock	F5 <sub>H</sub>
Security Disable Password	F6 <sub>H</sub>

#### 4.1.2 Identify Device command

The Identify Device command (command code EC<sub>H</sub>) transfers information about the drive to the host following power up. The data is organized as a single 512-byte block of data, whose contents are shown in the table on page 29. All reserved bits or words should be set to zero. Parameters listed with an “x” are drive-specific or vary with the state of the drive. See Section 2.0 on page 3 for default parameter settings.

The following commands contain drive-specific features that may not be included in the *Draft ATA-7 Standard*.

Word	Description	Value
0	Configuration information: <ul style="list-style-type: none"> <li>• Bit 15: 0 = ATA; 1 = ATAPI</li> <li>• Bit 7: removable media</li> <li>• Bit 6: removable controller</li> <li>• Bit 0: reserved</li> </ul>	0C5A <sub>H</sub>
1	Number of logical cylinders	16,383
2	ATA-reserved	C837 <sub>H</sub>
3	Number of logical heads	16
4	Retired	0000 <sub>H</sub>
5	Retired	0000 <sub>H</sub>
6	Number of logical sectors per logical track: 63	003F <sub>H</sub>
7–9	Retired	0000 <sub>H</sub>
10–19	Serial number: (20 ASCII characters, 0000 <sub>H</sub> = none)	ASCII
20	Retired	0000 <sub>H</sub>
21	Retired	1000 <sub>H</sub>
22	Obsolete	0004 <sub>H</sub>
23–26	Firmware revision (8 ASCII character string, padded with blanks to end of string)	x.xx
27–46	Drive model number: (40 ASCII characters, padded with blanks to end of string)	ST340015A
47	(Bits 7–0) Maximum sectors per interrupt on Read multiple and Write multiple (32)	8010 <sub>H</sub>
48	Reserved	0000 <sub>H</sub>
49	Standard Standby timer, IORDY supported and may be disabled	2F00 <sub>H</sub>
50	ATA-reserved	0000 <sub>H</sub>
51	PIO data-transfer cycle timing mode	0200 <sub>H</sub>
52	Retired	0200 <sub>H</sub>
53	Words 54–58, 64–70 and 88 are valid	0007 <sub>H</sub>



Word	Description	Value
54	Number of current logical cylinders	xxxx <sub>H</sub>
55	Number of current logical heads	xxxx <sub>H</sub>
56	Number of current logical sectors per logical track	xxxx <sub>H</sub>
57–58	Current capacity in sectors	xxxx <sub>H</sub>
59	Number of sectors transferred during a Read Multiple or Write Multiple command	xxxx <sub>H</sub>
60–61	Total number of user-addressable LBA sectors available (see Section 2.2 for related information)	ST340015A = 80,022,600
62	Retired	0000 <sub>H</sub>
63	Multiword DMA active and modes supported (see note following this table)	xx07 <sub>H</sub>
64	Advanced PIO modes supported (modes 3 and 4 supported)	0003 <sub>H</sub>
65	Minimum multiword DMA transfer cycle time per word (120 nsec)	0078 <sub>H</sub>
66	Recommended multiword DMA transfer cycle time per word (120 nsec)	0078 <sub>H</sub>
67	Minimum PIO cycle time without IORDY flow control (240 nsec)	00F0 <sub>H</sub>
68	Minimum PIO cycle time with IORDY flow control (120 nsec)	0078 <sub>H</sub>
69–74	ATA-reserved	0000 <sub>H</sub>
75	Queue depth	0000 <sub>H</sub>
76–79	ATA-reserved	0000 <sub>H</sub>
80	Major version number	007E <sub>H</sub>
81	Minor version number	0000 <sub>H</sub>
82	Command sets supported	346B <sub>H</sub>
83	Command sets supported	5901 <sub>H</sub>
84	Command sets support extension	4003 <sub>H</sub>

Word	Description	Value
85	Command sets enabled	3469 <sub>H</sub>
86	Command sets enabled	1A01 <sub>H</sub>
87	Command sets enable extension	4003 <sub>H</sub>
88	Ultra DMA support and current mode (see note following this table)	xx3F <sub>H</sub>
89	Security erase time	0000 <sub>H</sub>
90	Enhanced security erase time	0000 <sub>H</sub>
91	Advanced power management value	0000 <sub>H</sub> <b>(Not Supported)</b>
92	Master password revision code	8002 <sub>H</sub>
93	Hardware reset value (see description following this table)	xxxx <sub>H</sub>
94	Auto acoustic management setting	xxxx <sub>H</sub> <b>(Not Supported)</b>
95–127	ATA-reserved	0000 <sub>H</sub>
128	Security status	0001 <sub>H</sub>
129–159	Seagate-reserved	xxxx <sub>H</sub>
160–254	ATA-reserved	0000 <sub>H</sub>
255	Integrity word	xxA5 <sub>H</sub>

**Note.** Advanced Power Management (APM) and Automatic Acoustic Management (AAM) features are not supported.

**Note.** See the bit descriptions below for words 63, 88, 93 and 94 of the Identify Drive data:

**Description (if bit is set to 1)**

**Bit      Word 63**

- 0      Multiword DMA mode 0 is supported.
- 1      Multiword DMA mode 1 is supported.
- 2      Multiword DMA mode 2 is supported.
- 8      Multiword DMA mode 0 is currently active.
- 9      Multiword DMA mode 1 is currently active.
- 10     Multiword DMA mode 2 is currently active.

**Bit      Word 88**

- 0      Ultra DMA mode 0 is supported.
- 1      Ultra DMA mode 1 is supported.
- 2      Ultra DMA mode 2 is supported.
- 3      Ultra DMA mode 3 is supported.
- 4      Ultra DMA mode 4 is supported.
- 8      Ultra DMA mode 0 is currently active.
- 9      Ultra DMA mode 1 is currently active.
- 10     Ultra DMA mode 2 is currently active.
- 11     Ultra DMA mode 3 is currently active.
- 12     Ultra DMA mode 4 is currently active.
- 13     Ultra DMA mode 5 is currently active.

**Bit      Word 93**

- 13     1 = 80-conductor cable detected, CBLID above  $V_{IH}$   
0 = 40-conductor cable detected, CBLID below  $V_{IL}$

**Bit      Word 94**

- 0–7    Current AAM setting
- 8–15   AAM Power on default

### 4.1.3 Set Features command

This command (EF<sub>H</sub>) controls the implementation of various features that the drive supports. When the drive receives this command, it sets BSY, checks the contents of the Features register, clears BSY and generates an interrupt. If the value in the register does not represent a feature that the drive supports, the command is aborted. Power-on default has the read look-ahead and write caching features enabled. The acceptable values for the Features register are defined as follows:

- 02<sub>H</sub> Enable write cache (*default*).
- 03<sub>H</sub> Set transfer mode (based on value in Sector Count register).

Sector Count register values:

- 00<sub>H</sub> Set PIO mode to default (PIO mode 2).
- 01<sub>H</sub> Set PIO mode to default and disable IORDY (PIO mode 2).
- 08<sub>H</sub> PIO mode 0
- 09<sub>H</sub> PIO mode 1
- 0A<sub>H</sub> PIO mode 2 (*default*)
- 0B<sub>H</sub> PIO mode 3
- 0C<sub>H</sub> PIO mode 4
- 20<sub>H</sub> Multiword DMA mode 0
- 21<sub>H</sub> Multiword DMA mode 1
- 22<sub>H</sub> Multiword DMA mode 2
- 40<sub>H</sub> Ultra DMA mode 0
- 41<sub>H</sub> Ultra DMA mode 1
- 42<sub>H</sub> Ultra DMA mode 2
- 43<sub>H</sub> Ultra DMA mode 3
- 44<sub>H</sub> Ultra DMA mode 4
- 45<sub>H</sub> Ultra DMA mode 5
  
- 55<sub>H</sub> Disable read look-ahead (read cache) feature.
- 82<sub>H</sub> Disable write cache.
- AA<sub>H</sub> Enable read look-ahead (read cache) feature (*default*).

F1<sub>H</sub> Report full capacity available

**Note.** At power-on, or after a hardware or software reset, the default values of the features are as indicated above.

#### 4.1.4 S.M.A.R.T. commands

S.M.A.R.T. provides near-term failure prediction for disc drives. When S.M.A.R.T. is enabled, the drive monitors predetermined drive attributes that are susceptible to degradation over time. If self-monitoring determines that a failure is likely, S.M.A.R.T. makes a status report available to the host. Not all failures are predictable. S.M.A.R.T. predictability is limited to the attributes the drive can monitor. For more information on S.M.A.R.T. commands and implementation, see the *Draft ATA-7 Standard*.

SeaTools diagnostic software activates a built-in drive self-test (DST S.M.A.R.T. command for D4<sub>H</sub>) that eliminates unnecessary drive returns. The diagnostic software ships with all new drives and is also available at:

<http://seatools.seagate.com>.

This drive is shipped with S.M.A.R.T. features enabled. You must have a recent BIOS or software package that supports S.M.A.R.T. to use this feature. The table below shows the S.M.A.R.T. command codes that the drive supports.

Code in features register	S.M.A.R.T. command
D0 <sub>H</sub>	S.M.A.R.T. Read Data
D1 <sub>H</sub>	Vendor-specific
D2 <sub>H</sub>	S.M.A.R.T. Enable/Disable Attribute Autosave
D3 <sub>H</sub>	S.M.A.R.T. Save Attribute Values
D4 <sub>H</sub>	S.M.A.R.T. Execute Off-line Immediate (runs DST)
D5 <sub>H</sub>	S.M.A.R.T. Read Log Sector
D6 <sub>H</sub>	S.M.A.R.T. Write Log Sector
D7 <sub>H</sub>	Vendor-specific
D8 <sub>H</sub>	S.M.A.R.T. Enable Operations
D9 <sub>H</sub>	S.M.A.R.T. Disable Operations
DA <sub>H</sub>	S.M.A.R.T. Return Status

**Note.** If an appropriate code is not written to the Features Register, the command is aborted and 0x04 (abort) is written to the Error register.

## 5.0 Seagate Technology support services

### Online Services

#### Internet

**www.seagate.com** for information about Seagate products and services. Worldwide support is available 24 hours daily by e-mail for your questions.

*Presales Support:* [www.seagate.com/support/email/email\\_presales.html](http://www.seagate.com/support/email/email_presales.html) or [DiscPresales@Seagate.com](mailto:DiscPresales@Seagate.com)

*Technical Support:* [www.seagate.com/support/email/email\\_disc\\_support.html](http://www.seagate.com/support/email/email_disc_support.html) or [DiscSupport@Seagate.com](mailto:DiscSupport@Seagate.com)

#### mySeagate

[my.seagate.com](http://my.seagate.com) is the industry's first Web portal designed specifically for OEMs and distributors. It provides self-service access to critical applications, personalized content and the tools that allow partners to manage their Seagate account functions. Submit pricing requests, orders and returns through a single, password-protected Web interface—anytime, anywhere in the world.

For support, questions and comments:

E-mail: [partner.support@seagate.com](mailto:partner.support@seagate.com)

Phone (direct): +1-405-324-4740

Phone (toll-free): 1-877-347-2444 (US and Canada), or access a complete list of region-specific international toll-free phone numbers at [my.seagate.com](http://my.seagate.com)

#### reseller.seagate.com

[reseller.seagate.com](http://reseller.seagate.com) supports Seagate resellers with product information, program benefits and sales tools. You may register for customized communications that are not available on the web. These communications contain product launch, EOL, pricing, promotions and other channel-related information. To learn more about the benefits or to register, go to [reseller.seagate.com](http://reseller.seagate.com), any time, from anywhere in the world.

[reseller.seagate.com](http://reseller.seagate.com) partner support

24 hours a day, seven days a week:

By web form: [reseller.seagate.com/contact/forms](http://reseller.seagate.com/contact/forms)

By phone: Access a complete list of regional phone numbers at [reseller.seagate.com/support/](http://reseller.seagate.com/support/)

## Seagate Online Store

US customers can purchase Seagate disc drives 24 hours daily at [www.seagate.com/buy/online/](http://www.seagate.com/buy/online/).

## Automated Phone Services

**SeaFONE® (1-800-SEAGATE)** is the Seagate toll-free number (1-800-732-4283) to access our automated self-help and directory assistance for Seagate support services. Using a touch-tone phone, you can find service and support phone numbers, answers to commonly asked questions, troubleshooting tips and specifications for disc drives 24 hours daily. International callers can reach this service by dialing +1-405-324-4770.

## Presales, Technical Support and Customer Service

### Presales Support

Our Presales Support staff can help you determine which Seagate products are best suited for your specific application or computer system.

### Technical Support

If you need help installing your drive, consult your system's documentation or contact the dealer's support services department for assistance specific to your system. Seagate technical support is also available to assist you online at [support.seagate.com](http://support.seagate.com) or through one of our technical support service centers. Have your system configuration information and your drive's "ST" model number available.

**SeaTDD™ (+1-405-324-3655)** is a telecommunications device for the deaf (TDD). You can send questions or comments 24 hours daily and exchange messages with a technical support specialist from 8:00 A.M. to 11:45 A.M. and 1:00 P.M. to 6:00 P.M. (Central time) Monday through Friday.

### Warranty Service

Seagate offers worldwide customer support for Seagate drives. Seagate distributors, OEMs and other direct customers should contact their Seagate service center representative for warranty-related issues. Resellers or end users of drive products should contact their place of purchase or one of the Seagate warranty service centers for assistance. Have your drive's "ST" model number and serial number available.

### Authorized Service Centers

In some countries outside the US, you can contact an Authorized Service Center for service.



## USA/Canada/Latin America Support Services

### Presales Support

Call Center	Toll-free	Direct dial	FAX
Americas	1-877-271-3285	+1-405-324-4730	+1-405-324-4704

### Technical Support

Call Center	Toll-free	Direct dial	FAX
Americas	1-800-SEAGATE†	+1-405-324-4770	+1-405-324-4702

### Warranty Service

Call Center	Toll-free	Direct dial	FAX / Internet
USA, Mexico and Latin America	1-800-468-3472	+1-405-324-4720	+1-405-324-4722
Canada			
<i>Memofix</i> *	1-800-636-6349	+1-905-660-4936	+1-905-660-4951 <a href="http://www.memofix.com">www.memofix.com</a>
<i>Adtech</i> *	1-800-624-9857	+1-905-890-3099	+1-905-890-3977 <a href="http://www.adtech1.com">www.adtech1.com</a>
Brazil			
<i>MA Centro de Serviços</i> *	—	+55-21-2509-7267	+55-21-2507-6672 e-mail: <a href="mailto:centro.de.servicos.brasil@seagate.com">centro.de.servicos.brasil@seagate.com</a>

---

\*Authorized Service Center

†For product-specific phone number

## European Support Services

For European presales, technical support, and warranty service, dial the toll-free number for your specific country. If your country is not listed here, dial our European call center at +31-20-316-7222 from 8:30 A.M. to 5:00 P.M. (Central Europe time) Monday through Friday. The European call center is located in Amsterdam, The Netherlands.

### Call Center

Austria	0 800-20 12 90
Belgium	0 800-74 876
Denmark	80 88 12 66
France	0 800-90 90 52
Germany	0 800-182 6831
Ireland	1 800-55 21 22
Italy	800-790695
Netherlands	0 800-732 4283
Norway	800-113 91
Poland	00 800-311 12 38
Spain	900-98 31 24
Sweden	0 207 90 073
Switzerland	0 800-83 84 11
Turkey	00 800-31 92 91 40
United Kingdom	0 800-783 5177

### FAX Services—All European Countries

Presales/Technical Support/Warranty Service 31-20-653-3513

## Africa/Middle East Support Services

For presales, technical support, warranty service and FAX services in Africa and the Middle East, dial our European call center at +31-20-316-7222 from 8:30 A.M. to 5:00 P.M. (European central time) Monday through Friday, or send a FAX to +31-20-653-3513. The European call center is located in Amsterdam, The Netherlands.

## Asia/Pacific Support Services

For Asia/Pacific presales and technical support, dial the toll-free number for your specific country. The Asia/Pacific toll-free numbers are available from 6:00 A.M. to 10:45 A.M. and 12:00 P.M. to 6:00 P.M. (Australian Eastern time) Monday through Friday, except as noted. If your country is not listed here, direct dial one of our technical support locations.

<b>Call Center</b>	<b>Toll-free</b>	<b>Direct dial</b>	<b>FAX</b>
Australia	1800-14-7201	—	—
China (Chinese) <sup>1,3</sup>	800-810-9668	+86-10-6225-5336	—
Hong Kong	800-90-0474	—	—
Hong Kong (Chinese) <sup>1,3</sup>	001-800-0830-1730	—	—
India <sup>2,3</sup>	1-600-33-1104	—	—
Indonesia	001-803-1-003-2165	—	—
Japan	—	—	+81-3-5462-2978
Malaysia	1-800-80-2335	—	—
New Zealand	0800-443988	—	—
Singapore	800-1101-150	—	+65-6488-7525
Taiwan (Chinese) <sup>1,3</sup>	00-800-0830-1730	—	—
Thailand	001-800-11-0032165	—	—

## Warranty Service

<b>Call Center</b>	<b>Toll-free</b>	<b>Direct dial</b>	<b>FAX</b>
Asia/Pacific	—	+65-6485-3595	+65-6485-4860
Australia	1800-12-9277	—	—
India <sup>3</sup>	—	+91-44-821-6164	+91-44-827-2461

<sup>1</sup>Hours of operation are 8:30 A.M. to 5:30 P.M., Monday through Friday (Australian Western time).

<sup>2</sup>Hours of operation are 9:00 A.M. to 6:00 P.M., Monday through Saturday.

<sup>3</sup>Authorized Service Center



# Index

## A

acoustics 16  
Active mode 12  
agency certification (regulatory) 18  
altitude 14  
ambient conditions 3  
ambient temperature 8, 13  
areal density 1, 7  
ATA interface 27  
ATA-standard commands 29  
Australian C-Tick 19  
autodetection 1  
average seek time 8

## B

BPI 7  
breather filter hole precautions 22  
buffer 7  
burst 1

## C

cable 24  
cable select 1  
cable-select option 23  
cache 1, 7  
case temperature 13  
CE mark 18  
certification 18  
Check Power Mode 31  
commands 29  
compliance 18  
conducted noise 12  
conducted RF immunity 17  
configuring the drive 21  
connector pins 27  
connectors 24  
contact start-stop cycles 17  
CSA C22.2 (950) 18  
CSEL 23  
C-Tick 19

current profile 11  
cycles 17

## D

data-transfer rates 1  
DC power 8  
density 7  
diagnostic software 1, 38  
discs 6  
dissipation 10  
Download Microcode 29  
drive diagnostics 8  
drive monitoring 1  
drive self-test 1, 38  
DST 38

## E

electrical fast transient 17  
electromagnetic compatibility 18  
Electromagnetic Compatibility Directive 18  
electromagnetic immunity 17  
electrostatic discharge 17  
EMC compliance 18  
EN 60950 18  
enclosures 19  
environmental specifications 13  
EPRML 1, 7  
error-correction algorithms 1  
errors 17  
European Union 18  
Execute Device Diagnostics 29

## F

failure prediction 38  
FCC verification 19  
Features register 36  
Flush Cache 29  
Format Track 29  
formatted capacity 6  
frequency 17

- G**
  - GMR 1
  - guaranteed sectors 6
- H**
  - handling 21
  - heads 1, 6
  - height 7
  - humidity 14
- I**
  - I/O data-transfer rate 7
  - Identify Device 29
  - Identify Device command 31
  - Idle 10, 31
  - Idle and Standby timers 13
  - Idle Immediate 31
  - Idle mode 12
  - Idle mode power 9
  - IEC950 18
  - Information Technology Equipment 18
  - Initialize Device Parameters 29
  - interface 7, 27
  - interface signals 27
  - interference 19
  - interleave 7
  - internal data-transfer rate OD 7
  - ISO document 7779 16
- J**
  - jumper settings 23
- K**
  - Korean RRL 18
- L**
  - LBA mode 6
  - length 7
  - logical geometry 6
- M**
  - maintenance 17
  - master 23
  - master/slave 1
  - Master/slave configuration 23
  - maximum temperature 13
  - Mean time between failures (MTBF) 17
  - modes 27
  - monitoring 1
  - mounting the drive 21, 24
- N**
  - noise 12
  - nominal power 3
  - nonoperating shock 15
  - nonoperating vibration 15
  - nonrecoverable read errors 17
- O**
  - operating 10
  - operating power and current 9
  - operating shock 15
  - operating vibration 15
  - orientation 24
- P**
  - physical characteristics 7
  - physical organization 6
  - pins 27
  - PIO 27
  - power consumption 9
  - power dissipation 10
  - power management 12
  - power specifications 8
  - power-management commands 31
  - power-management modes 12
  - Power-on to Ready 8
  - precautions 24
  - preventive maintenance 17
  - programmable power management 12

**R**

radiated RF immunity 17  
radio and television interference 19  
Radio frequency (RF) 17  
random track location 9  
Read Buffer 29  
Read DMA 29  
read errors 17  
Read Multiple 1, 29  
Read Sectors 29  
Read Verify Sectors 29  
read/write heads 6  
read/write power and current 9  
Recalibrate 29  
recording and interface technology 7  
recording density 7  
recording heads 1  
recording method 7  
register 36  
relative humidity 14  
reliability 17  
resistance 12  
resistive load 12  
RF 17

**S**

S.M.A.R.T. 29  
S.M.A.R.T. commands 38  
S.M.A.R.T. drive monitoring 1  
safety certification 18  
screws 24  
SeaShell 21  
SeaTools 1, 38  
sectors 6  
security commands 31  
Security Disable Password 31  
Security Erase Prepare 31  
Security Erase Unit 31  
Security Freeze Lock 31  
Security Set Password 31  
Security Unlock 31

Seek 29  
seek mode 9  
seek time 8  
Seeking 10  
service life 17  
servo electronics 9  
Set Features 29  
Set Features command 36  
Set Multiple Mode 29  
shock 15  
signals 27  
single-track seeks 8  
slave 23  
Sleep 10, 31  
Sleep mode 13  
sound 16  
specifications 3  
spindle speed 7  
Spinup 10  
spinup power 9  
Standby 10, 31  
Standby Immediate 31  
Standby mode 9, 12  
Standby to Ready 8  
start/stop times 8  
start-stop cycles 17  
static-discharge precautions 21  
stop times 8  
subassembly 19  
support services 39  
surge immunity 17

**T**

technical support services 39  
temperature 13  
temperature gradient 14  
timers 13  
track density 7  
track-to-track seek time 8  
TUV North America 18

**U**

UL 1950 18  
Ultra ATA/100 24  
Ultra DMA 24

**V**

vibration 15  
voltage 12  
voltage dips, interrupts 17  
voltage tolerance 12

**W**

weight 7  
wet bulb temperature 14  
width 7  
Write Buffer 30  
Write DMA 30  
Write Multiple 1, 30  
Write Sectors 30







**Seagate Technology LLC**

**920 Disc Drive, Scotts Valley, California 95066-4544, USA**

*Publication Number: 100256411, Rev. F, Printed in USA*