

# PROTECT YOUR MISSION-CRITICAL IT EQUIPMENT

ALERTWERKS™ SERVESENSOR MONITORING HUBS AND INTELLIGENT SENSORS

1.877.877.2269



[BLACKBOX.COM/ALERTWERKS](https://blackbox.com/alertwerks)

# PROTECT YOUR MISSION-CRITICAL IT EQUIPMENT AGAINST PHYSICAL THREATS – FROM TEMPERATURE EXTREMES TO WATER DAMAGE

## WHAT'S AN ENVIRONMENTAL MONITORING SYSTEM?

Environmental monitoring products enable you to actively monitor the conditions in your rack, server room, data center or anywhere else you need to protect critical assets. Use it for remote monitoring and management of a wide range of devices such as HVAC systems, security equipment, UPSs, generators, and industrial equipment. Conditions monitored include extreme temperatures, humidity, power spikes and surges, water leaks, smoke and chemical materials. With proper environmental monitoring, you're alerted to any conditions that could have an adverse effect on your mission-critical equipment. These products can also alert you to potential damage from human error, hacking or prying fingers.

Environmental monitors consist of three main elements: a base unit or hub, probes or sensors and network connectivity and integration. The hubs may contain one or more built-in sensors, as well as ports for hooking up external probes. They also include an Ethernet port and have software for remote configuration and graphing. This software may also work with existing network management software, such as SNMP systems.



DATA CENTERS



INDUSTRIAL & MANUFACTURING



ENERGY



OIL & GAS



HEALTHCARE



GREENHOUSES

## FEATURES

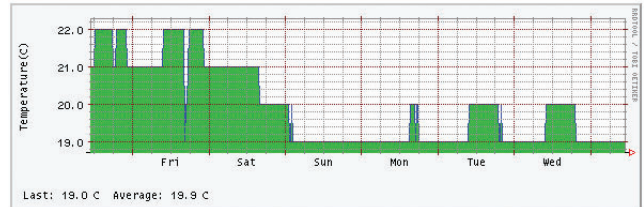
### Data measurement (see chart)

The environmental monitoring appliance displays the values measured by the attached probes, e.g. temperature, humidity, airflow, status of dry contact, door, motion detector and other sensors.

|                  |             |
|------------------|-------------|
| Temp Rack 03     | 66°F (19°C) |
| Humidity Rack 03 | 34%         |

### Data collecting and graphing (see chart below)

The measurements are periodically stored in the internal memory or external storage media and displayed as graphs.



### Alerts and notifications

When the measured value exceeds the predefined threshold, it triggers an alert: a blinking LED on the front panel, an audible alarm, SNMP trap, email, etc. The environmental monitoring appliance can also activate an external alarm system like a siren or strobe light.

### Easy setup and management

Simple, accurate and rugged, the environmental monitoring appliance is ready to run right out of the box. Plug the probes into the RJ-45 ports and they automatically configure and go online, ready to report any status change.

### Web-based management interface

A Java™-based web UI enables access to the hubs over any IP network – even the internet.

## BENEFITS

- Reduced downtime and increased equipment reliability
- Reduced OPEX
- Increased employee satisfaction

## APPLICATIONS

From data center device monitoring, to security footage broadcast over the internet, to remote management of proprietary equipment where physical access is difficult, environmental monitoring applications are essential to generating information about the conditions that affect your mission-critical IT equipment.

