

# DATASHEET

**MITSUBISHI ELECTRIC**

TM15T3A-H

**OTHER SYMBOLS:**

TM15T3AH, TM15T3A H, TM15T3A-H

**RGB ELEKTRONIKA AGACIAK CIACIEK  
SPÓŁKA JAWNA**

Jana Długosza 2-6 Street  
51-162 Wrocław  
Poland

✉ [biuro@rgbelektronika.pl](mailto:biuro@rgbelektronika.pl)

☎ +48 71 325 15 05



[www.rgbelektronika.pl](http://www.rgbelektronika.pl)



[www.rgbautomatyka.pl](http://www.rgbautomatyka.pl)

# YOUR PARTNER IN MAINTENANCE

Repair **this product** with RGB ELEKTRONIKA

[ORDER A DIAGNOSIS »](#)



At our premises in Wrocław, we have a fully equipped servicing facility. Here we perform all the repair works and test each later sold unit. Our trained employees, equipped with a wide variety of tools and having several testing stands at their disposal, are a guarantee of the highest quality service.

Buy **this product** at RGB AUTOMATYKA

[BUY »](#)

MITSUBISHI THYRISTOR MODULES

# TM15T3A-M,-H

MEDIUM POWER GENERAL USE  
INSULATED TYPE

TM15T3A-M,-H



- **Io** DC output current ..... **30A**
- **VRRM** Repetitive peak reverse voltage ..... **400/800V**
- **VDRM** Repetitive peak off-state voltage ..... **400/800V**
- **3 Phase Mix Bridge**
- **Insulated Type**
- **UL Recognized**

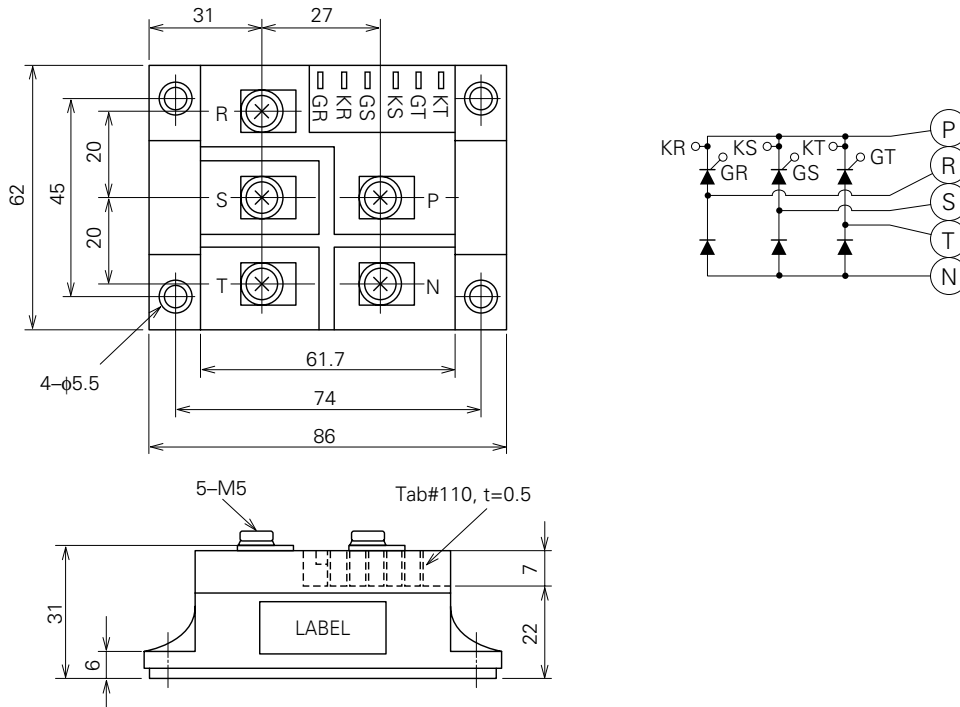
Yellow Card No. E80276 (N)  
File No. E80271

## APPLICATION

DC motor control, NC equipment, AC motor control, contactless switches, electric furnace temperature control, light dimmers

## OUTLINE DRAWING & CIRCUIT DIAGRAM

Dimensions in mm



# TM15T3A-M,-H

MEDIUM POWER GENERAL USE  
INSULATED TYPE

## ABSOLUTE MAXIMUM RATINGS

Symbol	Parameter	Voltage class		Unit
		M	H	
VRRM	Repetitive peak reverse voltage	400	800	V
VRSM	Non-repetitive peak reverse voltage	480	960	V
VR (DC)	DC reverse voltage	320	640	V
VDRM	Repetitive peak off-state voltage	400	800	V
VDSM	Non-repetitive peak off-state voltage	480	960	V
VD (DC)	DC off-state voltage	320	640	V

Symbol	Parameter	Conditions	Ratings	Unit
Io	DC output current	3-phase fullwave rectified, TC=104°C	30	A
ITSM, IFSM	Surge (non-repetitive) current	One half cycle at 60Hz, peak value	300	A
I <sup>2</sup> t	I <sup>2</sup> t for fusing	Value for one cycle of surge current	3.8 × 10 <sup>2</sup>	A <sup>2</sup> s
di/dt	Critical rate of rise of on-state current	VD=1/2VDRM, IG=0.5A, Tj=125°C	100	A/μs
PGM	Peak gate power dissipation		5.0	W
PG (AV)	Average gate power dissipation		0.5	W
VFGM	Peak gate forward voltage		10	V
VRGM	Peak gate reverse voltage		5.0	V
IFGM	Peak gate forward current		2.0	A
Tj	Junction temperature		-40~125	°C
Tstg	Storage temperature		-40~125	°C
Viso	Isolation voltage	Charged part to case	2500	V
—	Mounting torque	Main terminal screw M5	1.47~1.96	N·m
			15~20	kg·cm
		Mounting screw M5	1.47~1.96	N·m
			15~20	kg·cm
—	Weight	Typical value	310	g

## ELECTRICAL CHARACTERISTICS

Symbol	Parameter	Test conditions	Limits			Unit
			Min.	Typ.	Max.	
IRRM	Repetitive peak reverse current	Tj=125°C, VRRM applied	—	—	4.0	mA
IDRM	Repetitive peak of off-state	Tj=125°C, VDRM applied	—	—	4.0	mA
VTM, VFM	current	Tj=125°C, ITM=IFM=75A, instantaneous meas.	—	—	1.5	V
dv/dt	Forward voltage	Tj=125°C, Vd=2/3VDRM	500	—	—	V/μs
VGT	Critical rate of rise of off-state voltage	Tj=25°C, VD=6V, RL=2Ω	—	—	2.0	V
VGD	Gate trigger voltage	Tj=125°C, VD=1/2VDRM	0.25	—	—	V
IGT	Gate non-trigger voltage	Tj=25°C, VD=6V, RL=2Ω	10	—	50	mA
Rth (j-c)	Gate trigger current	Junction to case (per 1/6 module)	—	—	1.8	°C/W
Rth (c-f)	Thermal resistance	Case to fin, Conductive grease applied (per 1/6 module)	—	—	0.36	°C/W
—	Contact thermal resistance Insulation resistance	Measured with a 500V megohmmeter between main terminal and case	10	—	—	MΩ

Note: Items of the above table applies to the Thyristor part and the Diode part as circled in the following tables.

# TM15T3A-M,-H

MEDIUM POWER GENERAL USE  
INSULATED TYPE

## MAXIMUM RATINGS

Item	VRRM	VRSM	VR (DC)	VDRM	VD <sub>SM</sub>	VD (DC)	IT (RMS)	IT (AV)	ITSM	I <sup>2</sup> t	di/dt
							IF (RMS)	IF (AV)	IFSM		
Thyristor	○	○	○	○	○	○	○	○	○	○	○
Diode	○	○	○	—	—	—	○	○	○	○	—

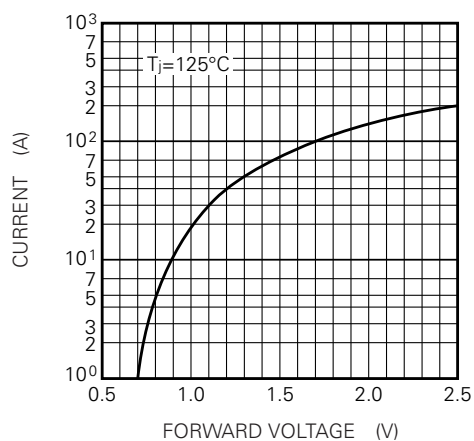
Item	PGM	PG (AV)	VFGM	IFGM	T <sub>j</sub>	T <sub>stg</sub>
Thyristor	○	○	○	○	○	○
Diode	—	—	—	—	○	○

## ELECTRICAL CHARACTERISTICS

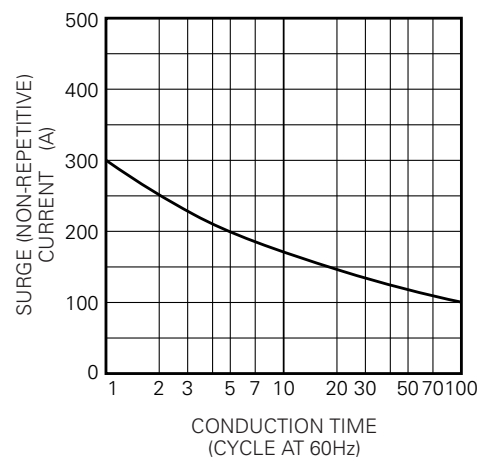
Item	I <sub>RRM</sub>	I <sub>DRM</sub>	V <sub>TM</sub>	dv/dt	V <sub>GT</sub>	V <sub>GD</sub>	I <sub>GT</sub>	R <sub>th (j-c)</sub>	R <sub>th (c-f)</sub>
			V <sub>FM</sub>						
Thyristor	○	○	○	○	○	○	○	○	○
Diode	○	—	○	—	—	—	—	○	○

## PERFORMANCE CURVES

MAXIMUM FORWARD CHARACTERISTIC



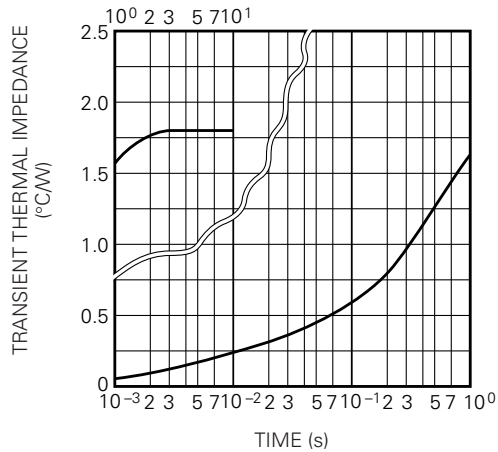
RATED SURGE (NON-REPETITIVE) CURRENT



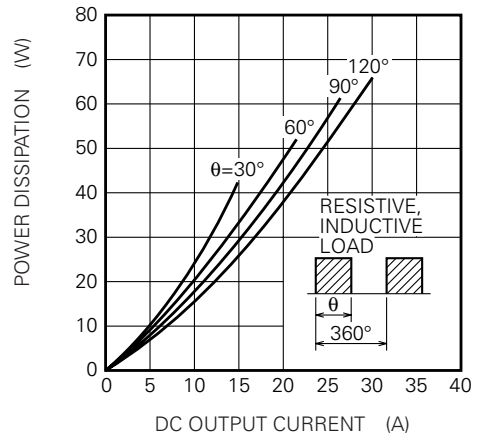
# TM15T3A-M,-H

MEDIUM POWER GENERAL USE  
INSULATED TYPE

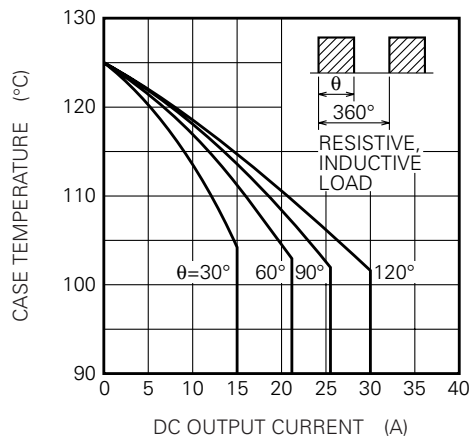
**MAXIMUM TRANSIENT THERMAL IMPEDANCE (JUNCTION TO CASE) (PER SINGLE ELEMENT)**



**MAXIMUM POWER DISSIPATION (THREE PHASE FULLWAVE RECTIFIED)**



**LIMITING VALUE OF THE DC OUTPUT CURRENT (THREE PHASE FULLWAVE RECTIFIED)**



This datasheet has been download from:

[www.datasheetcatalog.com](http://www.datasheetcatalog.com)

Datasheets for electronics components.