

# **SPECIFICATION FOR REFERENCE**

(FOR LCD MNT/TV 2 Lamp APPLICATION PURPOSE)

TFT LCD BACKLIGHTING INVERTER

PART NO. : FIF1521-07C

BUYER'S PART NO.:

## **CONTENTS**

- 1. Electrical Characteristics**
- 2. Functional Pin Description**
- 3. Mechanical Drawings**

# 1. Electrical Characteristics

- Analog dimming

NO.	Items (Unit)	Sign.	Condition		Min.	Typ.	Max.
1	Input Voltage [Vdc]	Vin			11.0	12.0	13.0
2	Input Current [A]	lin	Vin=12V	CTRL=5V	0.05	0.15	0.23
				CTRL=0V	0.78	0.88	0.98
3	Output Current 1,2 [mA]	Iout	Vin=12V	CTRL=5V	2.0	3.0	4.0
				CTRL=0V	7.5	8.2	8.9
4	Lamp Frequency [kHz]		Vin=12V	CTRL=0V	41	46	51
5	ON/OFF Control	ON	Vin=12V, ON/OFF=5V		Normal Operation		
		OFF	Vin=12V, ON/OFF=0V		Shut – Down (Lamp Off)		
6	Dim Adjust (Lamp Current Control)	CTRL	CTRL=0V, Max Current		0~5 V		
			CTRL=5V, Min Current				
7	Kick-Off Voltage (Vrms)	Vk-off	Kick-Off		More Than 1100V		

## 2. Functional Pin Description

### 2.1. Input Connector CN1: 12505WR-10A00 (Yeon-ho)

Pin No.	Symbol	Description
9,10	Vin	Input Voltage : 12V $\pm$ 1V
3,4,7,8	GND	GND
1	CTRL	Dim Adjust, Apply 0V ~ 5Vdc to Control Lamp Current 0 V :8.2mA, 5V :3.0mA (Each Lamp)
5	ON/OFF	Power System Return ( 5V:ON, 0V:OFF )

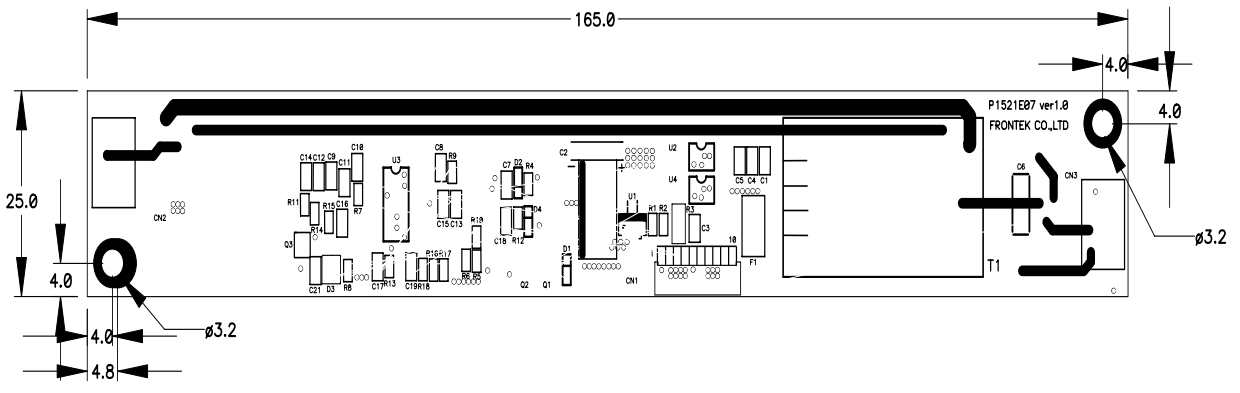
### 2.2. Output Connector CN2,3 : 20015WR-05A00 (Yeon-ho)

Pin No.	Symbol	Description
1	Lamp H	High Voltage connection to high side of lamp.
2	Lamp L	Low Voltage connection to low side of lamp.

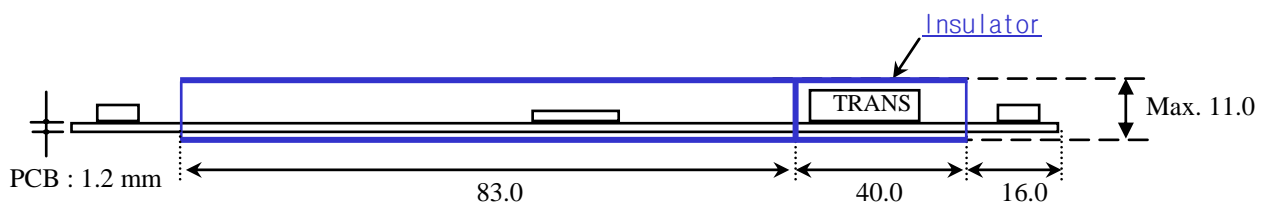
### 3.Mechanical Drawings

\*. Unit : mm  
\*.Tolerance : ± 0.2mm

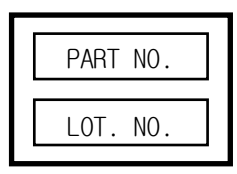
#### 3-1.P.W.B



#### 3-2.Trans & Insulator



#### 3-3.Marking



\*.PART NO: FIF1521-07C  
 \*.LOT NO.: F000000000  
 F : FRONTEK  
 0 : LINE  
 00: YEAR  
 00: MONTH  
 00: DAY  
 00: MANUFACTURE