


# Emergency Stop Pushbutton Switches (22-dia. or 25-dia.) A22E/A22NE-P

Install in 22-dia. or 25-dia.

**Panel Cutout** (When Using a Ring)

- Direct opening mechanism to open the circuit when the contact welds.
- Safety lock mechanism prevents operating errors.
- Lever for easily mounting and removing the Switch Blocks.
- Finger protection mechanism on Switch Unit provided as a standard feature.
- Use 25-dia. ring to install in 25-dia. panel cutouts.

 Be sure to read the "Safety Precautions" on pages 15, 28, and 37.



**NEW**

For the most recent information on models that have been certified for safety standards, refer to your OMRON website.

## Types of Emergency Stop Pushbutton Switches

- A22E Screw Terminal Block Types ..... from page 2
- A22NE-P Push-in Plus Terminal Block Types ..... from page 16

## Common Items

- Common Accessories / Tools ..... from page 32
- Safety Precautions ..... from page 37

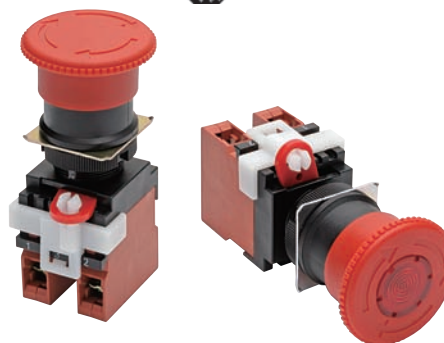
# A22E

A22E

## Install in 22-dia. or 25-dia. Panel Cutout

### (When Using a Ring)

- Increase wiring efficiency with three-row mounting of Switch Units. (with non-lighted Switch Blocks, three Units can be mounted for multiple contacts).
- Mounted using either open-type (fork-type) or closed-type (round-type) crimp terminals.
- Oil-resistant to IP65 (non-lighted models) / IP65 (lighted models).
- A lock plate is provided as a standard feature to ensure that the control box and switch are not easily separated.



Be sure to read the "Safety Precautions" on pages 15 and 37.

For the most recent information on models that have been certified for safety standards, refer to your OMRON website.

A22NE-P

## Model Number Structure

**Model Number Legend (Completely Assembled)** ..... Shipped as a set which includes the Operation Unit, LED Lamp (lighted model only), Mounting Latches, Switch Block, and Lock Plate



### 1. Lighted/Non-lighted

| Code | Description |
|------|-------------|
| None | Non-lighted |
| L    | Lighted *   |

\* Lighted Emergency Stop Switches are available only for the medium (M). turn-reset models.

### 2. Operation Unit size (diameter)/Reset function

| Code | Size    | Description |
|------|---------|-------------|
| MP   | 40 dia. | Pull-reset  |
| S    | 30 dia. | Turn-reset  |
| M    | 40 dia. |             |
| L    | 60 dia. |             |

### 3. LED Lamp voltage

Lighting unit (Direct lighting)

| Code | Description     | Operating Voltage |
|------|-----------------|-------------------|
| None | Non-lighted     | ---               |
| 6 A  | Lighted (LED) * | 6 VAC/DC          |
| 12 A |                 | 12 VAC/DC         |
| 24 A |                 | 24 VAC/DC         |

Lighting unit (Voltage-reduction lighting)

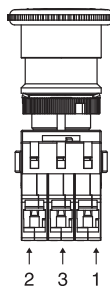
| Code | Description     | Operating Voltage |
|------|-----------------|-------------------|
| T1   | Lighted (LED) * | 100 VAC           |
| T2   | Lighted (LED) * | 200 VAC           |

\* Equipped with 24-VAC/DC LED.

### 4. Contacts

| Code | Number of Switch Blocks |    | Unit position |     |    |         |               |    |
|------|-------------------------|----|---------------|-----|----|---------|---------------|----|
|      |                         |    | Non-lighted   |     |    | Lighted |               |    |
|      | NO                      | NC | 1             | 2   | 3  | 1       | 2             | 3  |
| 01   | 0                       | 1  | ---           | --- | NC | ---     | Lighting unit | NC |
| 11   | 1                       | 1  | NO            | --- | NC | NO      | Lighting unit | NC |
| 02   | 0                       | 2  | NC            | --- | NC | NC      | Lighting unit | NC |
| 12   | 1                       | 2  | NO            | NC  | NC | ---     |               |    |
| 03   | 0                       | 3  | NC            | NC  | NC | ---     |               |    |

Note 1. NO: 1a-contact    NC: 1b-contact  
 2. For details on the unit position, refer to the figure below.



### 5. Configuration

| Code | Configuration                      |
|------|------------------------------------|
| None | Switch only                        |
| B    | Switch with Integrated Control Box |

### 6. Configuration

| Code   | Configuration  |
|--------|--|
| None   | Neither "EMO" nor "EMS" printed, arrows engraved in red. |
| EMO    | "EMO" and arrows printed in white.                       |
| EMO-RD | "EMO" printed in white, arrows engraved in red.          |
| EMS    | "EMS" and arrows printed in white.                       |
| EMS-RD | "EMS" printed in white, arrows engraved in red.          |

Common Accessories and Tools

Common Note