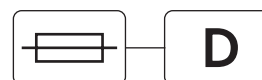


# Fuse Devices



Size / Rated current	Type Designation	Article No.	Units per package
----------------------	------------------	-------------	-------------------

## Fuse Links Z-DII./SE../GG, Operating Class gG (gL)

• Rated voltage 500 V AC / 400 V DC

DII E27	2 A	Z-DII/SE-2A/GG	112125	5 / 500
DII E27	4 A	Z-DII/SE-4A/GG	112126	5 / 500
DII E27	6 A	Z-DII/SE-6A/GG	112127	5 / 500
DII E27	10 A	Z-DII/SE-10A/GG	112128	5 / 500
DII E27	16 A	Z-DII/SE-16A/GG	112129	5 / 500
DII E27	20 A	Z-DII/SE-20A/GG	112130	5 / 500
DII E27	25 A	Z-DII/SE-25A/GG	112131	5 / 500
DIII E33	35 A	Z-DIII/SE-35A/GG	112135	5 / 500
DIII E33	50 A	Z-DIII/SE-50A/GG	112136	5 / 500
DIII E33	63 A	Z-DIII/SE-63A/GG	112137	5 / 500

## Fuse Links Z-DII./SE../DZ, Operating Class DZ

• Rated voltage 500 V AC / 400 V DC

DII E27	2 A	Z-DII/SE-2A/DZ	112028	5 / 500
DII E27	4 A	Z-DII/SE-4A/DZ	112029	5 / 500
DII E27	6 A	Z-DII/SE-6A/DZ	112120	5 / 500
DII E27	10 A	Z-DII/SE-10A/DZ	112121	5 / 500
DII E27	16 A	Z-DII/SE-16A/DZ	112122	5 / 500
DII E27	20 A	Z-DII/SE-20A/DZ	112123	5 / 500
DII E27	25 A	Z-DII/SE-25A/DZ	112124	5 / 500
DIII E33	35 A	Z-DIII/SE-35A/DZ	112132	5 / 500
DIII E33	50 A	Z-DIII/SE-50A/DZ	112133	5 / 500
DIII E33	63 A	Z-DIII/SE-63A/DZ	112134	5 / 500

## Gauge Ring Z-DII./PE

DII E27	2 A	Z-DII/PE-2A	110396	50
DII E27	4 A	Z-DII/PE-4A	110397	50
DII E27	6 A	Z-DII/PE-6A	110398	50
DII E27	10 A	Z-DII/PE-10A	110399	50
DII E27	16 A	Z-DII/PE-16A	110790	50
DII E27	20 A	Z-DII/PE-20A	110791	50
DIII E33	2 A	Z-DIII/PE-2A	110792	50
DIII E33	4 A	Z-DIII/PE-4A	110793	50
DIII E33	6 A	Z-DIII/PE-6A	110794	50
DIII E33	10 A	Z-DIII/PE-10A	110795	50
DIII E33	16 A	Z-DIII/PE-16A	110796	50
DIII E33	20 A	Z-DIII/PE-20A	110797	50
DIII E33	25 A	Z-DIII/PE-25A	110798	50
DIII E33	35 A	Z-DIII/PE-35A	110799	50
DIII E33	50 A	Z-DIII/PE-50A	110800	50

## Screw-in Gauge Ring Z-DII./PS

DII E27	2 A	Z-DII/PS-2A	112138	25 / 1500
DII E27	4 A	Z-DII/PS-4A	112139	25 / 1500
DII E27	6 A	Z-DII/PS-6A	112140	25 / 1500
DII E27	10 A	Z-DII/PS-10A	112141	25 / 1500
DII E27	16 A	Z-DII/PS-16A	112142	25 / 1500
DII E27	20 A	Z-DII/PS-20A	112143	25 / 1500
DII E27	25 A	Z-DII/PS-25A	112144	25 / 1500
DIII E33	35 A	Z-DIII/PS-35A	112145	25 / 850
DIII E33	50 A	Z-DIII/PS-50A	112146	25 / 850
DIII E33	63 A	Z-DIII/PS-63A	112147	25 / 850

## Screw Caps Z-DII./SK

DII E27		Z-DII/SK	112148	50 / 600
DIII E33		Z-DIII/SK	112149	30 / 360

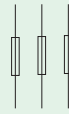
Xpole

# Fuse Devices

## Fuse Links Z-DII./SE

- According to DIN EN 60269-1 (VDE 0636 Part 10), DIN EN 60269-3 (VDE 0636 Part 30), DIN VDE 0636-301, CEE 16, IEC/EN 60269-1, IEC/EN 60269-3
- For fuse bases DII-SO..., DIII-SO...

### Connection diagram



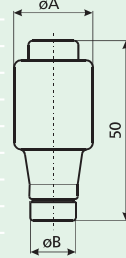
### Technical Data

#### Electrical

Operating class	gG (gL), DZ
Rated voltage $U_n$	
AC	500 V
DC	400 V
Rated frequency	45-65 Hz
Insulating class	C-VDE0110
Rated short circuit breaking capacity at $1.1 \times U_n$	
AC	50 kA / $\cos \varphi = 0.2$
DC	8 kA / $\tau = 15$ ms

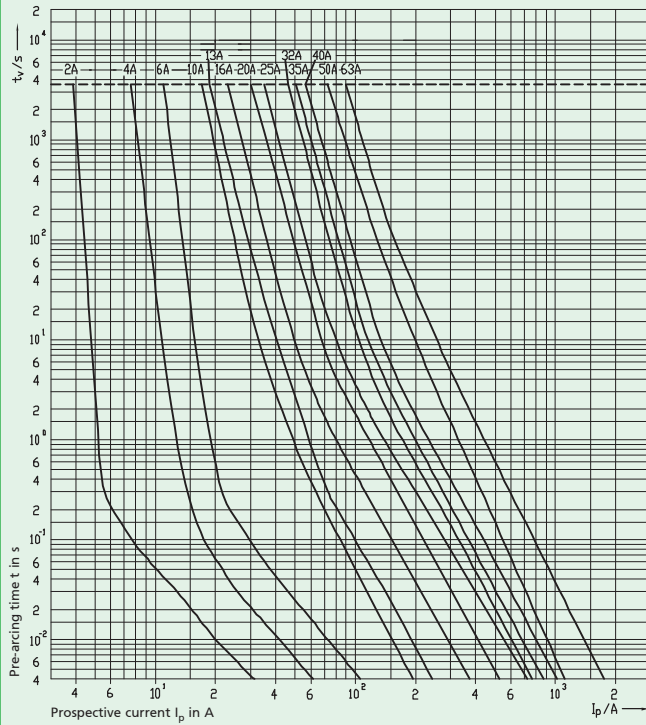
#### Dimensions (mm)

$I_n$ (A)	$\varnothing A$	$\varnothing B$
DII for fuse base E27		
2	21,5	6
4	21,5	6
6	21,5	6
10	21,5	8
16	21,5	10
20	21,5	12
25	21,5	14
DIII for fuse base E33		
35	27	16
50	27	18
63	27	20

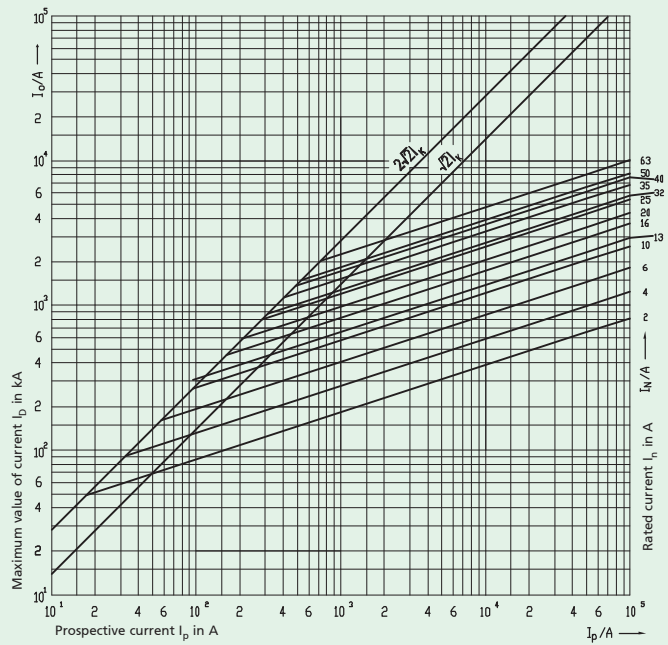


### Characteristics Z-DII./SE

Time/current characteristics of Z-DII-Fuse-links 2 ... 63A gG(gL)



Let-through current characteristics of Z-DII-Fuse-links 2 ... 63A gG(gL)

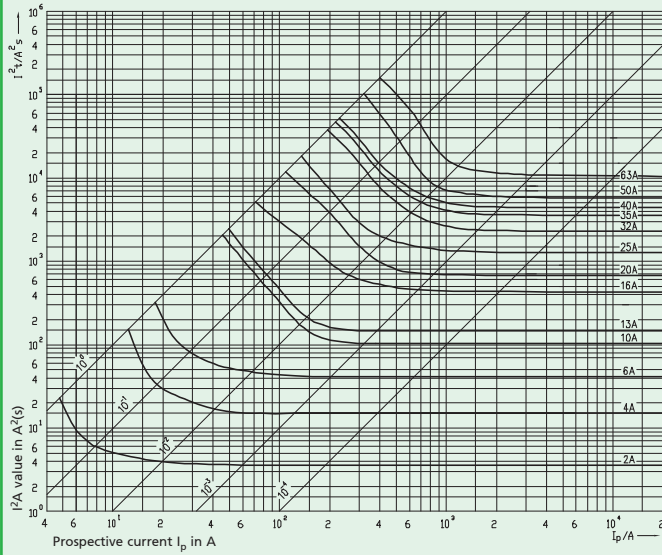


Xpole

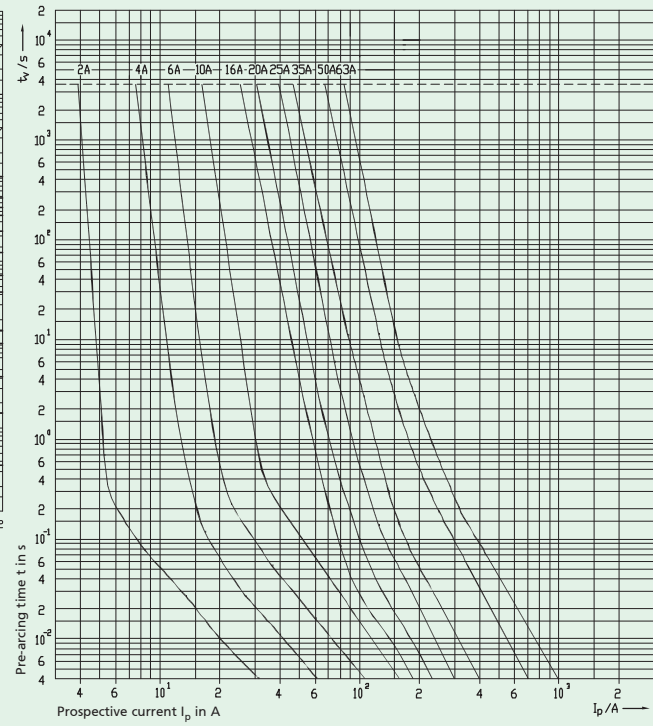
# Fuse Devices

## Characteristics Z-DII/SE

Melting energy characteristics  $I^2t/A$  of Z-DII-Fuse-links 2 ... 63A gG(GL)



Time/current characteristics of Z-DII-Fuse-links 2 ... 63A DZ



Xpole

# Fuse Devices

## Gauge Ring Z-DII./PE

- Used for current coding of DII.-SO/...

### Technical Data

#### Electrical

Rated current

DII	2 - 20 A
DIII	2 - 50 A

## Screw-in Gauge Ring Z-DII./PS

- Used for current coding of DII.-SO/...-PS

### Technical Data

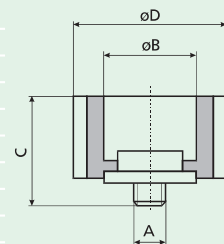
#### Electrical

Rated current

DII	2 - 25 A
DIII	35 - 63 A

#### Dimensions (mm)

I <sub>n</sub> (A)	A	B	C	D
DII for fuse base E27				
2	3/16"	6.5	17	24
4	3/16"	6.5	17	24
6	3/16"	6.5	17	24
10	3/16"	8.5	17	24
16	3/16"	10.5	17	24
20	3/16"	12.5	17	24
25	3/16"	14.5	17	24
DIII for fuse base E33				
35	3/16"	16.5	17	24
50	3/16"	18.5	17	24
63	3/16"	20.5	17	24



## Screw-Caps Z-DII./SK

- Used for DII.-SO

### Technical Data

#### Electrical

Rated current

DII	max. 25 A
DIII	max. 63 A

Rated voltage 500 V AC / 400 V DC

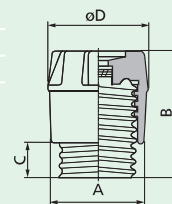
#### Mechanical

Electrical thread

DII	E27
DIII	E33

#### Dimensions (mm)

I <sub>n</sub> (A)	A	B	C	D
DII	34	44	12	35
DIII	43	44	12	43



### Practical Hint

A complete and functioning D-fuse system consists of

- base for screw-in gauge ring + fuse link + screw-in gauge ring + screw-cap
- base for gauge ring + fuse link + gauge ring + screw-cap

The cartridge ring adapter insert is not required for the highest rated current of each size (DII ... 25 A and DIII ... 63 A).