



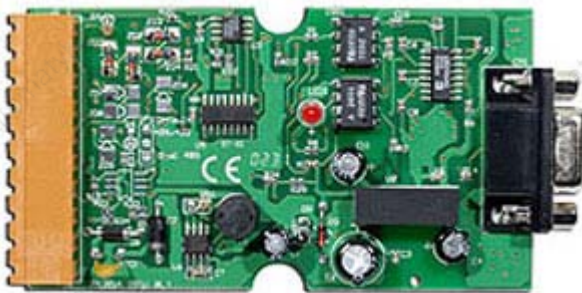
## I-7520

RS-232 to RS-485 Converter



### Features

- Input : RS-232 protocol
- Output : RS-485 protocol (two wire, D+, D-)
- Speed : auto switching baud rate, 300~115200 BPS
- "Self Tuner" inside
- 256 modules max. in one RS-485 network without repeater
- 2048 modules max. in one RS-485 network with repeater
- Isolation voltage: 3000VDC at RS-232 side
- Repeater request: 4,000 feet or over 256 modules



### Ordering Information

I-7520	RS-232 to RS-485 converter
--------	----------------------------