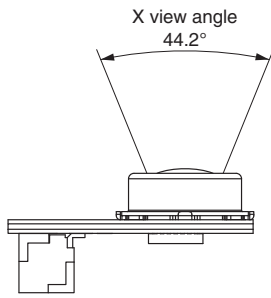


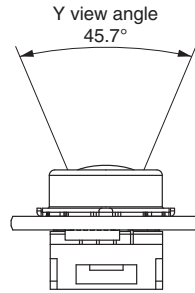
Field of View Characteristics

D6T-44L-06

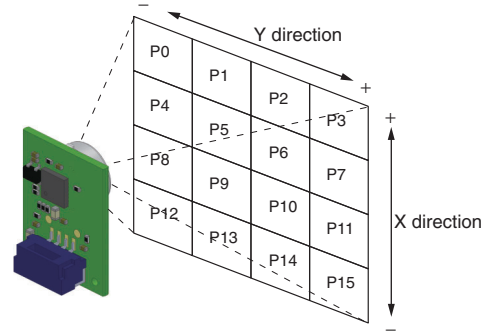
Field of view in X Direction



Field of view in Y Direction



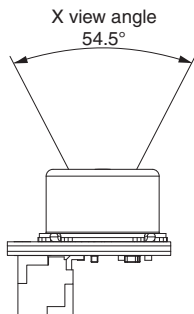
Detection Area for Each Pixel



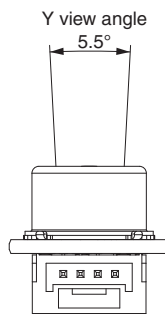
Note: Definition of view angle: Using the maximum Sensor output as a reference, the angular range where the Sensor output is 50% or higher when the angle of the Sensor is changed is defined as the view angle.

D6T-8L-09

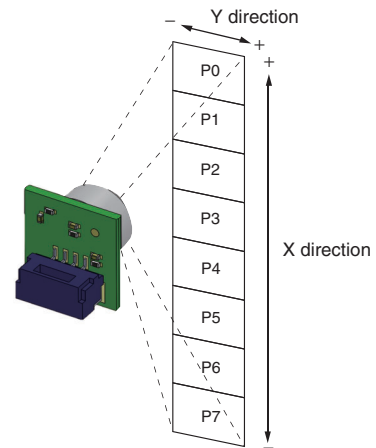
Field of view in X Direction



Field of view in Y Direction



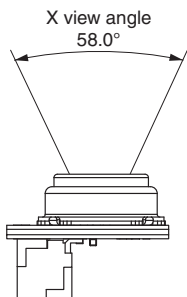
Detection Area for Each Pixel



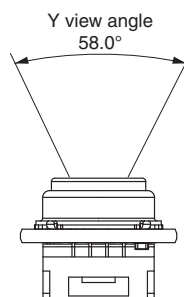
Note: Definition of view angle: Using the maximum Sensor output as a reference, the angular range where the Sensor output is 50% or higher when the angle of the Sensor is changed is defined as the view angle.

D6T-1A-01

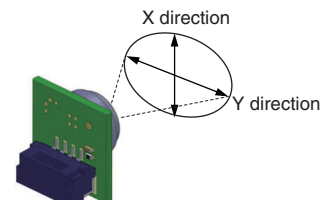
Field of view in X Direction



Field of view in Y Direction

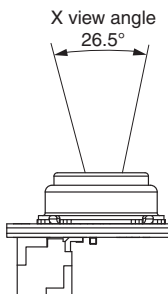


Detection Area for Each Pixel

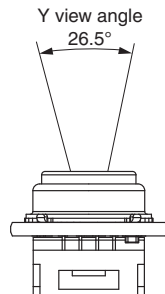


D6T-1A-02

Field of view in X Direction



Field of view in Y Direction



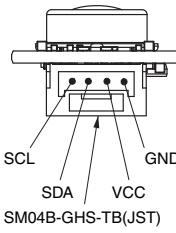
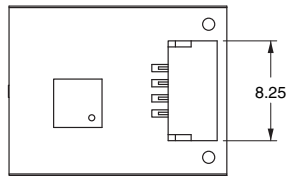
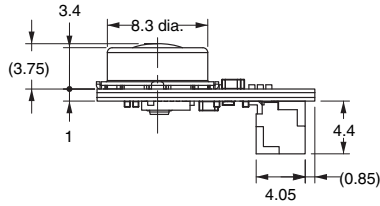
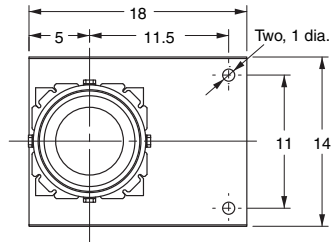
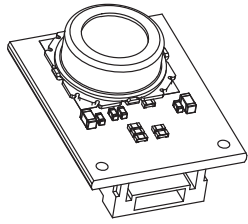
Note: Definition of view angle: Using the maximum Sensor output as a reference, the angular range where the Sensor output is 50% or higher when the angle of the Sensor is changed is defined as the view angle.

D6T

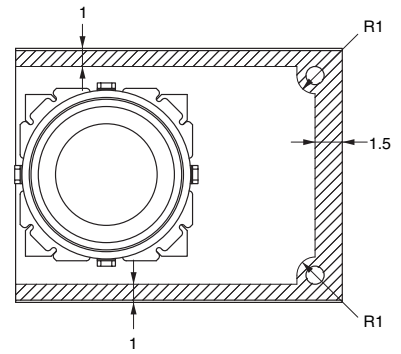
MEMS Thermal Sensors

Dimensions (Unit: mm)

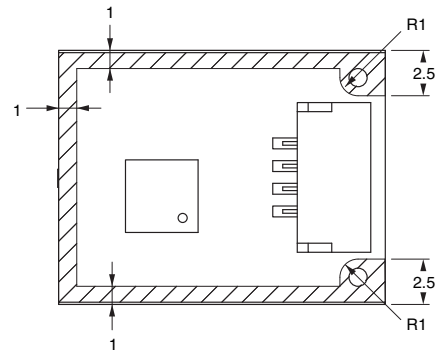
D6T-44L-06



Supporting and Mounting Area (Shaded Portion)
Top View



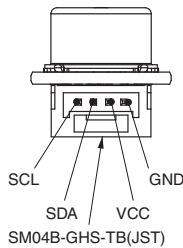
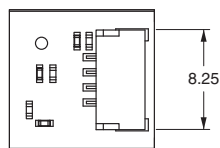
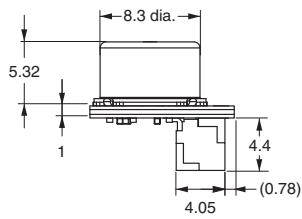
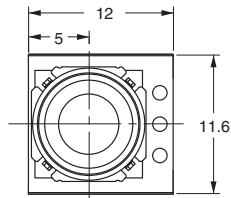
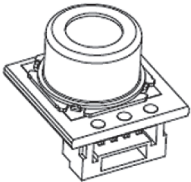
Bottom View



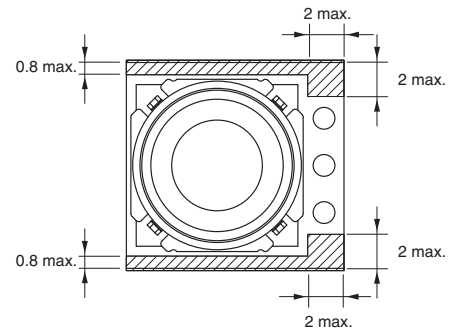
Note: Due to insulation distance limitations, do not allow metal parts to come into contact with the Sensor.

D6T-8L-09

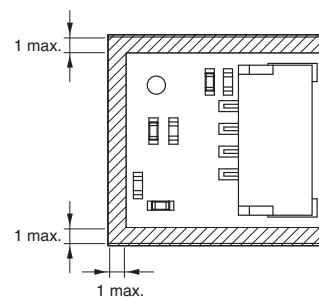
D6T



Supporting and Mounting Area (Shaded Portion)
Top View



Bottom View



Note: Due to insulation distance limitations, do not allow metal parts to come into contact with the Sensor.

Note: Unless otherwise specified, a tolerance of ± 0.3 mm applies to all dimensions.