

Double Side Cooled Module

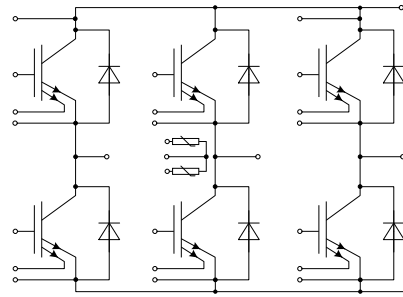
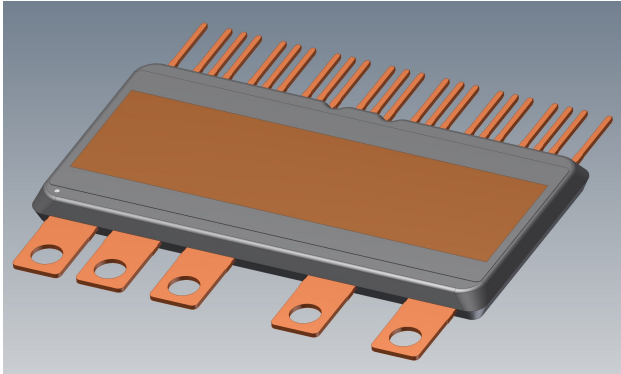
FS200R07A02E3\_S6

Final Data Sheet

V3.1, 2019-10-11

Automotive High Power

## 1 Features / Description



$V_{CES} = 700 \text{ V}$   
 $I_C = 200 \text{ A}$

### Typical Applications

- Automotive Applications
- Hybrid Electrical Vehicles (H)EV

### Electrical Features

- Increased Blocking Voltage Capability to 700V
- Integrated Current Sensor
- Low Inductive Design
- $T_{vj\ op} = 150^\circ\text{C}$

### Mechanical Features

- 2.5kV AC 1min Insulation
- Double sided cooling
- Compact design
- RoHS compliant
- Integrated NTC temperature sensor

### Description

The HybridPACK™ DSC L is a very compact six-pack module targeting hybrid and electric vehicles.

The module is based on Infineon's long-term experience developing IGBT power modules and Trench-Field-Stop IGBTs including matching diodes with enhanced softness. Additionally, on-die integrated current sensors and module temperature sensors (2 x NTC) support to monitor the IGBT state. These features enable enhanced short-circuit protection and intelligent control of the system.

The extreme compact package is realized by using Double Sided Cooling (DSC). This new assembly technology enables enhanced thermal and electrical performance at high reliability and mechanical robustness.

Furthermore, this module allows combination with other existing Double Sided Cooling packages (e.g. HybridPACK™ DSC S) to extend the single inverter to a dual inverter configuration.

| Product Name     | Ordering Code |
|------------------|---------------|
| FS200R07A02E3_S6 | SP001661220   |