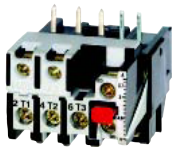


# Thermal Overload Relays

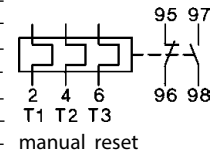


For plug-in mounting

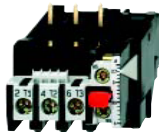


Setting Range D.O.L. (A)	$\Delta$ (A)	Type	Pack pcs.	Weight kg/pc.
<b>With Manual Reset for contactors MB-..</b>				
0,12 - 0,18	-	U12/16E 0,18 K1	1	0,10
0,18 - 0,27	-	U12/16E 0,27 K1	1	0,10
0,27 - 0,4	-	U12/16E 0,4 K1	1	0,10
0,4 - 0,6	-	U12/16E 0,6 K1	1	0,10
0,6 - 0,9	-	U12/16E 0,9 K1	1	0,10
0,8 - 1,2	-	U12/16E 1,2 K1	1	0,10
1,2 - 1,8	-	U12/16E 1,8 K1	1	0,10
1,8 - 2,7	-	U12/16E 2,7 K1	1	0,10
2,7 - 4 4	-	U12/16E 4 K1	1	0,10
4 - 6 6	7 - 10,5	U12/16E 6 K1	1	0,10
6 - 9 9	10,5 - 15,5	U12/16E 9 K1	1	0,10
8 - 11	14 - 19	U12/16E 11 K1	1	0,10
10 - 14	18 - 24	U12/16E 14 K1	1	0,10

Wiring Diagram

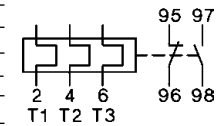


manual reset



Setting Range D.O.L. (A)	$\Delta$ (A)	Type	Pack pcs.	Weight kg/pc.
<b>With Manual Reset, for contactors MC (D)10-S.. to MC(D)22-S..</b>				
0,12 - 0,18	-	U12/16E 0,18 MC	1	0,10
0,18 - 0,27	-	U12/16E 0,27 MC	1	0,10
0,27 - 0,4	-	U12/16E 0,4 MC	1	0,10
0,4 - 0,6	-	U12/16E 0,6 MC	1	0,10
0,6 - 0,9	-	U12/16E 0,9 MC	1	0,10
0,8 - 1,2	-	U12/16E 1,2 MC	1	0,10
1,2 - 1,8	-	U12/16E 1,8 MC	1	0,10
1,8 - 2,7	-	U12/16E 2,7 MC	1	0,10
2,7 - 4 4	-	U12/16E 4 MC	1	0,10
4 - 6 6	7 - 10,5	U12/16E 6 MC	1	0,10
6 - 9 9	10,5 - 15,5	U12/16E 9 MC	1	0,10
8 - 11	14 - 19	U12/16E 11 MC	1	0,10
10 - 14	18 - 24	U12/16E 14 MC	1	0,10
13 - 18	23 - 31	U12/16E 18 MC	1	0,10
17 - 23	30 - 40	U12/16E 23 MC	1	0,10
22 - 30	38 - 52	U12/16E 30 MC	1	0,13

Wiring Diagram

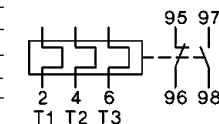


manual reset

For contactors MC-10-S.. to MC-22-S..



Setting Range	Type	Pack pcs.	Weight kg/pc.
0,12 - 0,18	MCOR-1 0,18	1	0,14
0,18 - 0,27	MCOR-1 0,27	1	0,14
0,27 - 0,4	MCOR-1 0,4	1	0,14
0,4 - 0,6	MCOR-1 0,6	1	0,14
0,6 - 0,9	MCOR-1 0,9	1	0,14
0,8 - 1,2	MCOR-1 1,2	1	0,14
1,2 - 1,8	MCOR-1 1,8	1	0,14
1,8 - 2,7	MCOR-1 2,7	1	0,14
2,7 - 4 4	MCOR-1 4	1	0,14
4 - 6 6	MCOR-1 6	1	0,14
6 - 9 9	MCOR-1 9	1	0,14
8 - 11	MCOR-1 11	1	0,14
10 - 14	MCOR-1 14	1	0,14
13 - 18	MCOR-1 18	1	0,14
17 - 24	MCOR-1 24	1	0,14
23 - 32	MCOR-1 32	1	0,14



manual and auto reset

# Thermal Overload Relays



For plug-in mounting

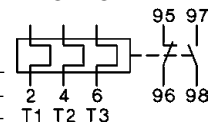


Setting Range  
D.O.L. (A)  $\Delta$  (A)

For contactors MC24-S.. to MC40-S..

Setting Range	D.O.L. (A)	$\Delta$ (A)	Type	Pack pcs.	Weight kg/pc.
10 - 14	18 - 24		MCOR-2 14	1	0,30
14 - 20	24 - 35		MCOR-2 20	1	0,30
20 - 28	35 - 48		MCOR-2 28	1	0,30
28 - 42	48 - 73		MCOR-2 42	1	0,30

Wiring Diagram

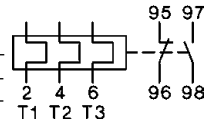


manual and auto reset



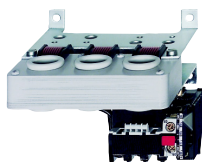
For contactors MC50-S.. to MC74-S..

Setting Range	D.O.L. (A)	$\Delta$ (A)	Type	Pack pcs.	Weight kg/pc.
20 - 28	35 - 48		MCOR-3 28	1	0,40
28 - 42	48 - 73		MCOR-3 42	1	0,40
40 - 52	70 - 90		MCOR-3 52	1	0,40
52 - 65	90 - 112		MCOR-3 65	1	0,40
60 - 74	104 - 128		MCOR-3 74	1	0,40



manual and auto reset

For separate mounting

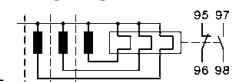


Setting Range  
D.O.L. (A)  $\Delta$  (A)

For contactors MC9-S.. to MC115-S..

Setting Range	D.O.L. (A)	$\Delta$ (A)	Type	Pack pcs.	Weight kg/pc.
60 - 90	104 - 156		MCOR-4 90	1	0,90
80 - 120	140 - 207		MCOR-4 120	1	0,90

Wiring Diagram



manual reset

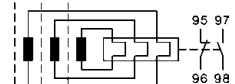


For contactors MC-151.. and MC-176.., busbars included

Setting Range	D.O.L. (A)	$\Delta$ (A)	Type	Pack pcs.	Weight kg/pc.
120 - 180	208 - 312		MCOR-5 180	1	1,5

For contactors MC-210.. up to MC-316.., busbars included

Setting Range	D.O.L. (A)	$\Delta$ (A)	Type	Pack pcs.	Weight kg/pc.
144 - 216	250 - 374		MCOR-6 216	1	1,8
216 - 320	374 - 554		MCOR-6 320	1	1,8



manual and auto reset



For contactors MC-316.., MC-450.., MC-550.., MC-700.., MC-860..

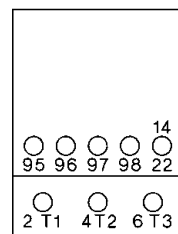
Setting Range	D.O.L. (A)	$\Delta$ (A)	Type	Pack pcs.	Weight kg/pc.
240 - 360	416 - 623		MCOR-7 360	1	4,1
360 - 540	623 - 935		MCOR-7 540	1	4,1
540 - 800	935 - 1385		MCOR-7 800	1	4,1

For contactors MC-1000.., MC-1200..

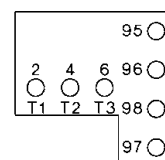
Setting Range	D.O.L. (A)	$\Delta$ (A)	Type	Pack pcs.	Weight kg/pc.
700 - 1000	1200 - 1730		MCOR-8 1000	1	7,0
875 - 1250	1510 - 2160				

Position of Terminals

MCOR-1



U12/16E



MCOR-2, MCOR-3

