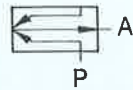


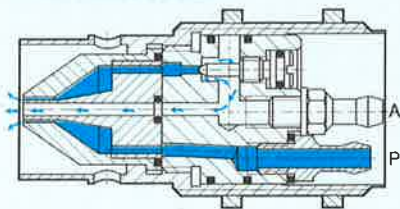
Reflex sensor  
Type RML-5  
Reflex sensor  
Type RFL-4  
RFL-15



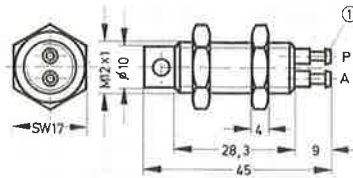
This reflex sensor is used as a non-contacting signal generator. Possible uses include the sensing of indicating instruments, monitoring of pressing and punching tools (thicknesses, perforations, position, sheet doubling), edge sensing control, magazine checking, counting, measuring (detectable change in distance 0.1 to 0.2 mm, depending on type).

The operation of the reflex sensor is not affected by heavy accumulation of dirt, noise, danger of explosion, total darkness, transparent or magnetic objects.

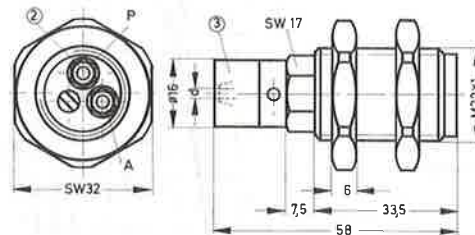
The sensor nozzle is supplied with filtered, non-lubricated compressed air with a supply pressure of 0.1 to 0.2 bar via port P. If the constantly escaping air flow is interrupted, a signal pressure  $\geq 0.5$  mbar is produced at outlet A. This pressure signal can be increased to the desired pressure by using a suitable amplifier.



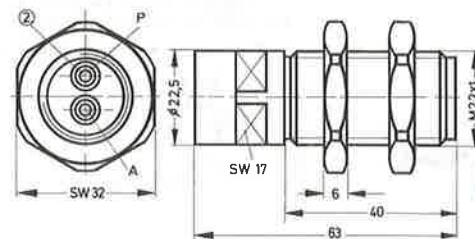
Type RML-5



Type RFL-4



Type RFL-15



- ① Barbed fitting for 3 mm plastic tubing  
Port P black, Port A yellow
- ② Barbed fitting for 4 mm plastic tubing
- ③ Coloured band

- 1 (P) = Supply port
- 2 (A) = Outlet line

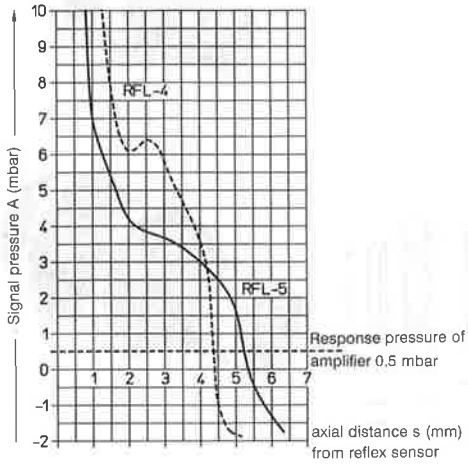
Type	Nozzle dia mm	Coloured identification	Max. sensing distance mm	Smallest detectable change in distance mm	Minimum detectable workpiece size with workpiece at rest		
					w x h mm	w x h mm	d mm
RML-5	—	—	5.5	0.2	3 x 10	8 x 10	3.5
RFL-4	2.25	yellow	4.5	0.1	3 x 20	8 x 20	3
RFL-15	—	—	15.5	0.3	—	—	20

Order code	Part No./Type	7050 RML-5	3649 RFL-4	7454 RFL-15
Medium	Compressed air, filtered, non-lubricated			
Design	Sensor nozzle without moving parts			
Mounting	M 12 x 1 with mounting nuts	M 22 x 1 with mounting nuts		
Installation dia.	12.5 mm	22.5 mm	22.5 mm	
Connection	Barbed fitting	for 3 mm tubing	for 4 mm tubing	
Supply pressure range at P	0.1 to 0.2 bar			0.2 to 0.3 bar
Max. supply pressure range	0.5 bar			1.5 bar
Signal pressure range at A	See graph overleaf			
Air consumption	See graph overleaf			
Ambient temperature	- 40 to + 100 °C*			
Medium temperature	- 10 to + 60 °C			
Materials	Brass	Aluminium, brass		
Weights	0.025 kg	0.050 kg	0.085 kg	

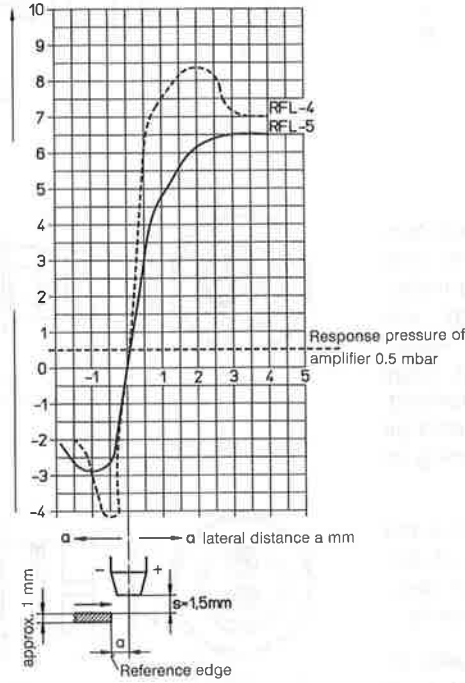
\* depending on tubing used

Signal pressure as a function of supply pressure and nozzle distance  
for Types RML-5, RFL-4

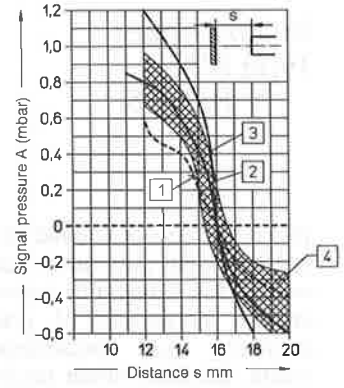
Axial sensitivity  
at a supply pressure of 150 mbar



Lateral sensitivity  
at a supply pressure of 150 mbar

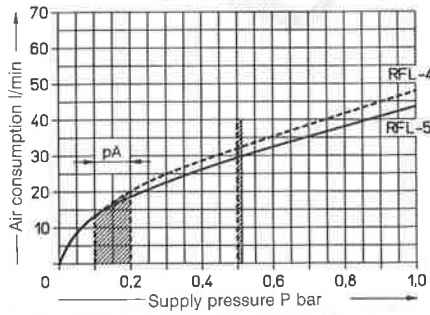


for Type RFL-15

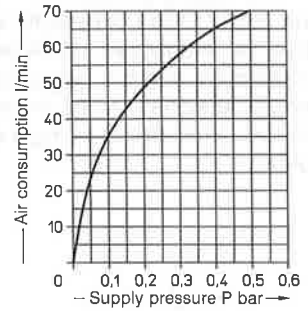


- ① Supply pressure 150 mbar
- ② Supply pressure 200 mbar
- ③ Supply pressure 300 mbar
- ④ Scatter for supply pressure 200 mbar

Air consumption as a function of supply pressure with unimpeded air outflow for Types RML-5, RFL-4



for RFL-15



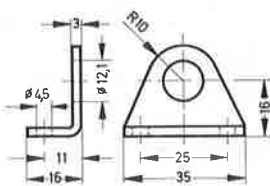
Additional mounting attachments

for mounting thread M12 x 1:

Foot mounting

Order code

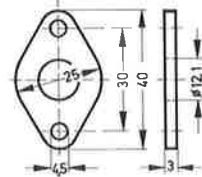
5123 HBN-8/10-1



Flange mounting

Order code

5129 FBN-8/10

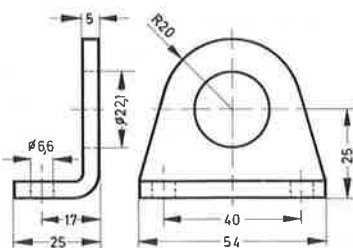


For mounting thread M22 x 1

Foot mounting

Order code

5127 HBN-20/25-1



Flange mounting

Order code

5131 FBN-20/25

