

# HybridPACK™ 2 Module

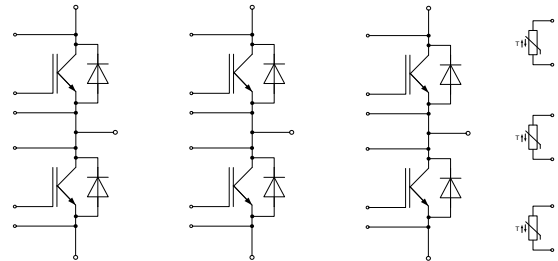
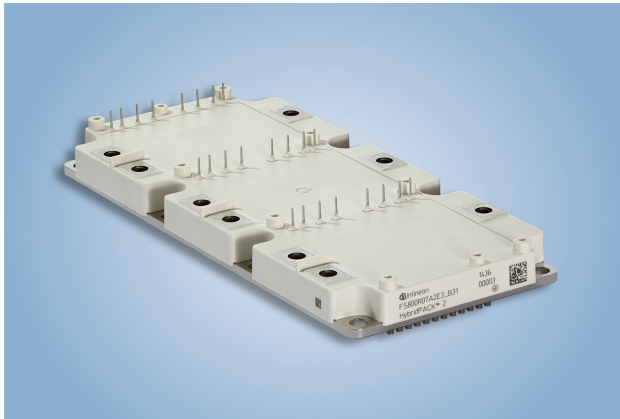
FS900R08A2P2\_B31

Final Data Sheet

V3.2, 2017-08-30

Automotive High Power

## 1 Features / Description



$V_{CES} = 750V$   
 $I_{C\ nom} = 900A$

### Typical Applications

- Automotive Applications
- Hybrid Electrical Vehicles (H)EV
- Commercial Agriculture Vehicles
- Motor Drives
- Optimized for automotive applications with DC link voltages up to 450 V

### Electrical Features

- $V_{CESat}$  with positive Temperature Coefficient
- Low  $V_{CESat}$
- Low Switching Losses
- Low  $Q_g$  and  $C_{res}$
- Low Inductive Design
- $T_{vj\ op} = 150^\circ C$
- Short-time extended Operation Temperature  
 $T_{vj\ op} = 175^\circ C$

### Mechanical Features

- 2.5kV AC 1min Insulation
- Direct Cooled PinFin Base Plate
- High Power Density
- Integrated NTC temperature sensor
- Copper Base Plate
- Isolated Base Plate
- RoHS compliant

| Product Name     | Ordering Code |
|------------------|---------------|
| FS900R08A2P2_B31 | -             |