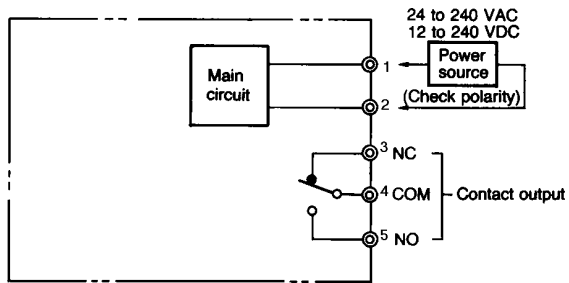
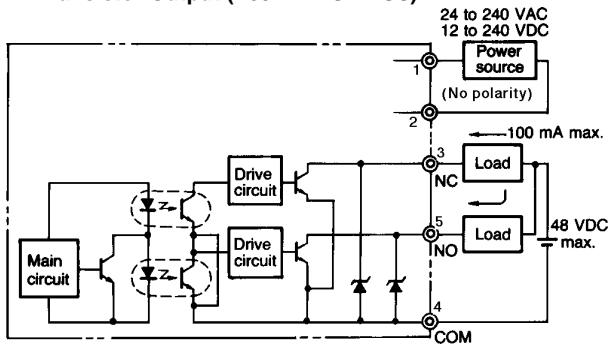


■ OUTPUT CIRCUIT DIAGRAMS

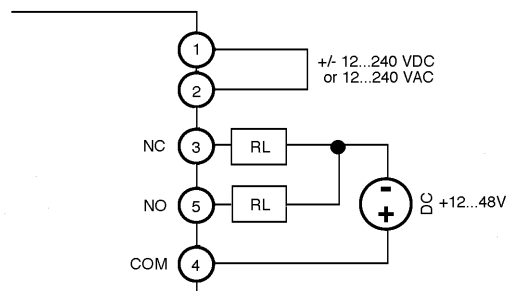
Relay Output (E3JM-□□M4□-US)



NPN Transistor Output (E3JM-□□S4□-US)

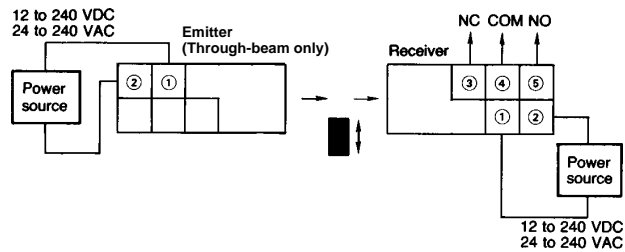


PNP Transistor Output (E3JM-R4□-US)



■ CONNECTIONS

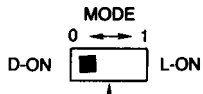
Through-beam type



■ TIMING CHARTS

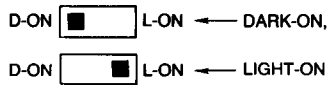
Sensors without Timer

Switch configuration

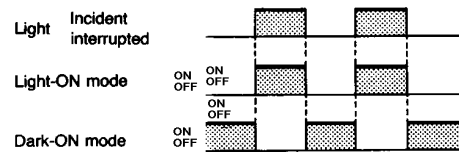


Operating mode selector switch

Switch setting



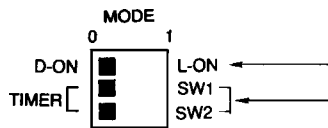
Timing chart



Sensor with Timer

The timing function cannot be disabled. Allow a minimum 0.1 sec. delay in response time if set for ON-delay.

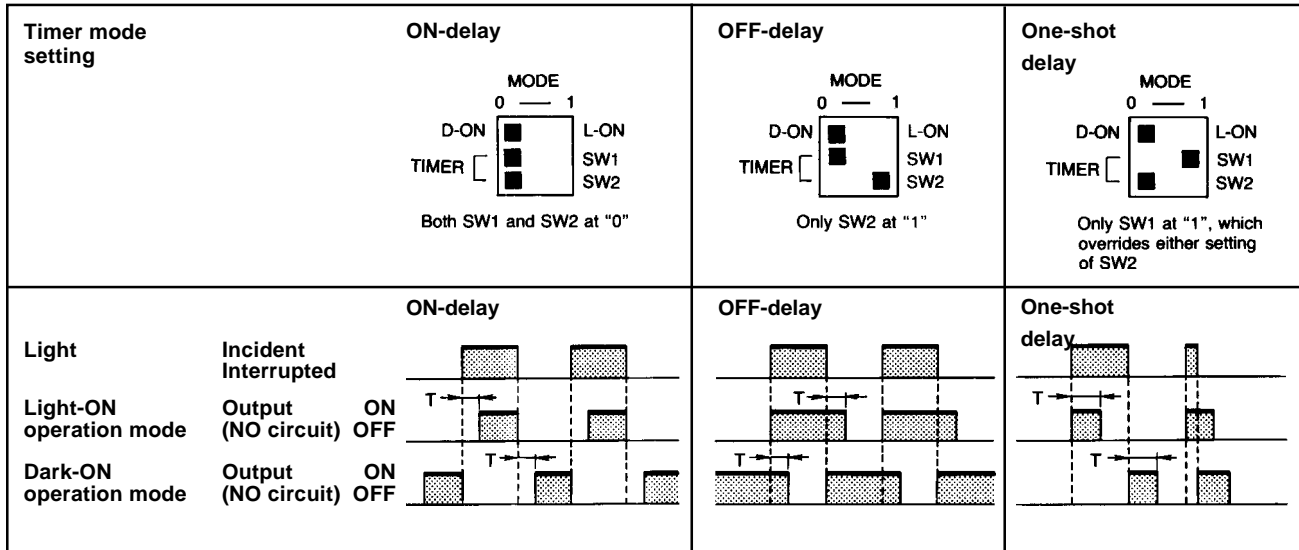
Switch configuration



Operating mode selector switch; Left for Dark-ON, right for Light-ON

Timer mode selector switch

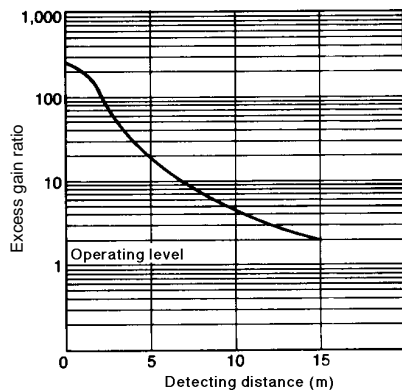
Timer chart and switch setting



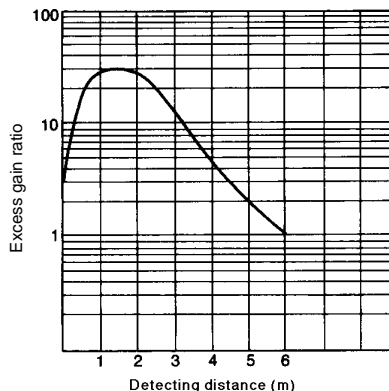
Engineering Data

■ EXCESS GAIN

Through-beam type
E3JM-10□□4□-US



Retroreflective type
E3JM-R4□□4□-US



Diffuse reflective type
E3JM-DS70□□4□-US

